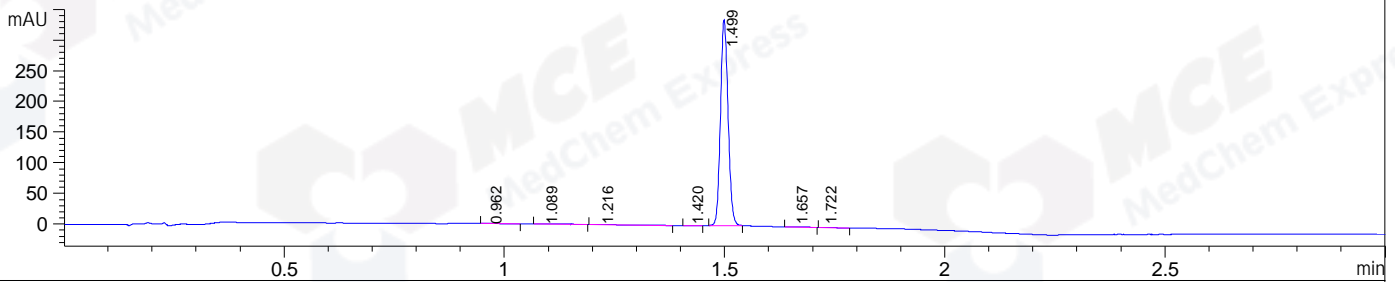
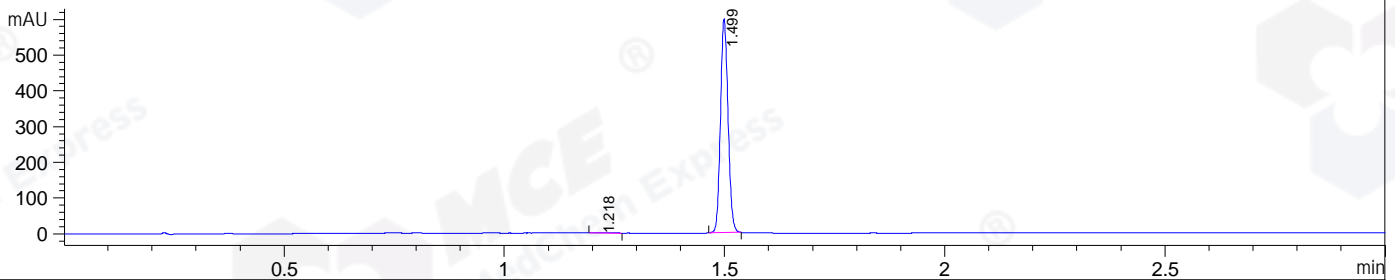


File E:\ChemStation\1\DATA\2023\2023-11\2023-11-15\CPK2023-N15-97288-UPLC-MS-10-019762.D
 Injection Date : 15-Nov-23, 17:41:53 Tgt Mass(EZX) :
 Sample Name : CPK2023-N15-97288 Location : P2-C-09
 Acq. Operator : LY_2278 Inj : 1
 Spec. Reported : MS Integration Inj Volume : 0.8 ul
 Acq. Method : E:\ChemStation\1\Methods\1-POS-UPLC3.0MIN(1.2)(150-1000).M
 Analysis Method : E:\CHEMSTATION\1\METHODS\1-POS-UPLC3.0MIN(1.2)(150-1000).M
 CAS NO. : 93697-74-6 WalkUp method: '1-POS-3MIN' Project: CPK2023
 Method Info : Mobile Phase: A: water(0.01%TFA) B:ACN(0.01%TFA)
 Gradient: 5% to 95%B within 2.0 min
 Flow Rate :1.2ml/min
 Column :Shim-pack Scepter C18-120, 3.0*33mm,3um
 Oven Temperature : 45C

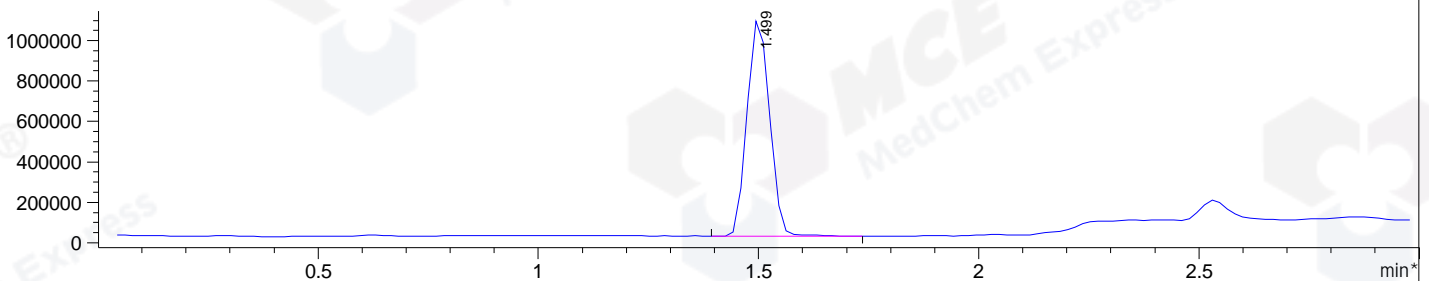
DAD1 A, Sig=214,4 Ref=off



DAD1 B, Sig=254,4 Ref=off



*MSD1 TIC, MS File ES-API, Pos, Scan, Frag: 70



Integration Results for DAD1 A, Sig=214,4 Ref=off

RetTim	Width	Area	Height	Area%
0.96	0.02	0.85	0.47	0.21
1.09	0.09	1.71	0.23	0.42
1.22	0.07	2.18	0.37	0.53
1.42	0.02	0.26	0.21	0.06
1.50	0.02	402.01	335.92	98.42
1.66	0.03	0.84	0.32	0.21
1.72	0.03	0.62	0.25	0.15

Integration Results for DAD1 B, Sig=254,4 Ref=off

RetTim	Width	Area	Height	Area%
1.22	0.03	1.58	1.04	0.22
1.50	0.02	715.01	598.89	99.78

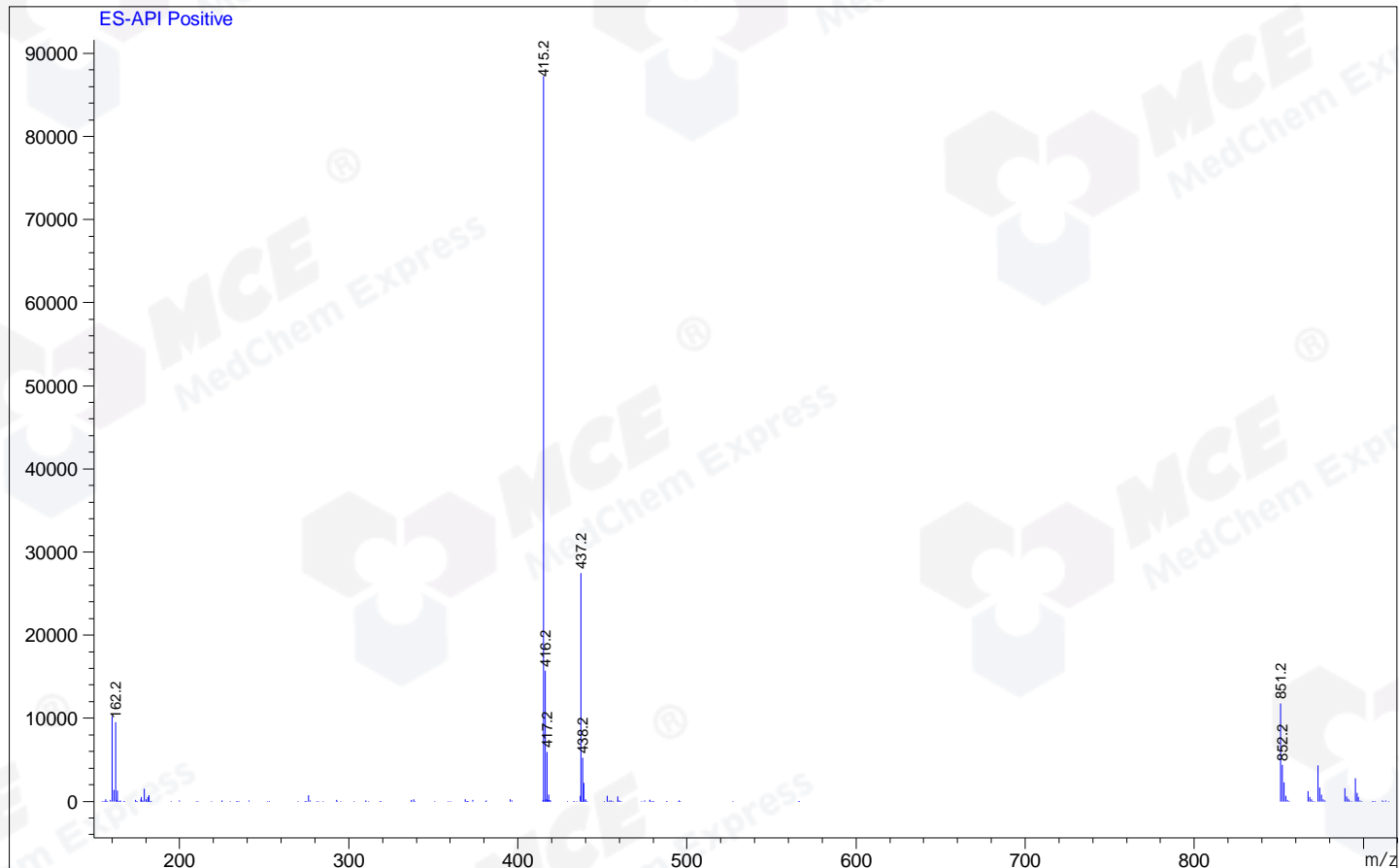
Integration Results for MSD1 TIC, MS File

RetTim	Width	Area	Height	Area%

1.50 0.06 3839290.50 1082134.88 100.00

Ret. Time: 1.50

<<<< POSITIVE SPECTRA >>>>



*** End of Report ***