

Sample Name: WGY11890-003-2

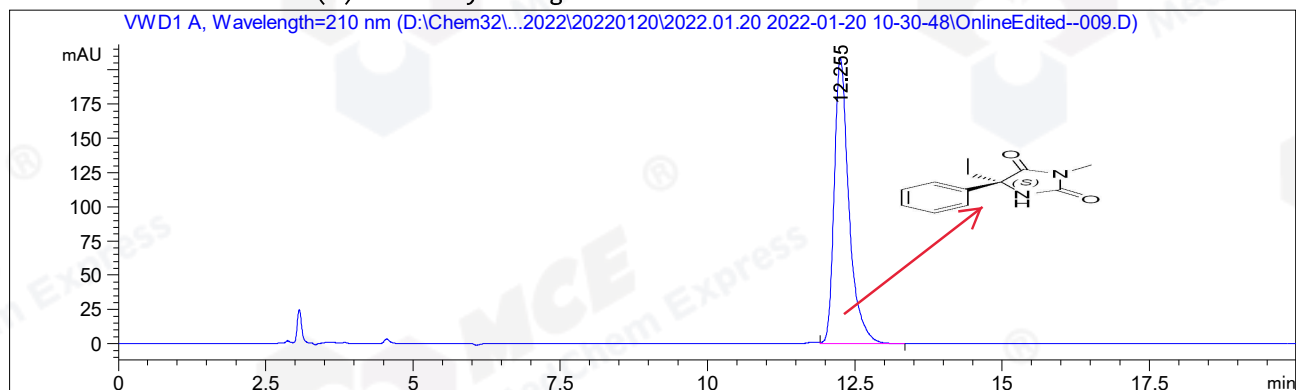
CAS NO.: 70989-04-7

```

=====
Acq. Operator   : GJH_1472                      Seq. Line :    9
Acq. Instrument : HPLC-04                      Location  :   56
Injection Date  : 1/20/2022 2:12:44 PM         Inj       :    1
                                           Inj Volume: 5.000 µl
Different Inj Volume from Sample Entry! Actual Inj Volume : 15.000 µl
Acq. Method     : D:\Chem32\1\Data2022\20220120\2022.01.20 2022-01-20 10-30-48\AD,95,210NM.C2
                                           .M
Last changed    : 1/20/2022 2:11:24 PM by GJH_1472
                                           (modified after loading)
Analysis Method : D:\Chem32\1\Data2022\20220120\2022.01.20 2022-01-20 10-30-48\AD,95,210NM.C2
                                           .M (Sequence Method)
Last changed    : 1/20/2022 2:33:17 PM by GJH_1472
                                           (modified after loading)
Sample Info     : LD1305_1A-20220119
                                           C-NP-77
=====

```

Additional Info : Peak(s) manually integrated



```

=====
                          Area Percent Report
=====

```

```

Sorted By      :      Signal
Multiplier     :      1.0000
Dilution       :      1.0000
Do not use Multiplier & Dilution Factor with ISTDs

```

Signal 1: VWD1 A, Wavelength=210 nm

Peak #	RetTime [min]	Type	Width [min]	Area [mAU*s]	Height [mAU]	Area %
1	12.255	VB	0.2612	3626.24976	208.41161	100.0000

```
Totals :                      3626.24976  208.41161
```

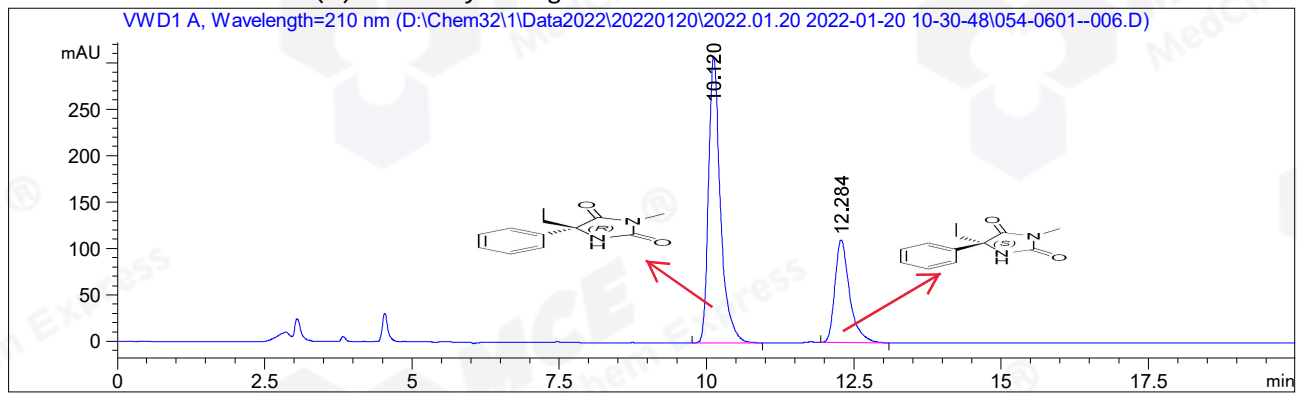
```

=====
*** End of Report ***
=====

```

=====
Acq. Operator : GJH_1472 Seq. Line : 6
Acq. Instrument : HPLC-04 Location : 54
Injection Date : 1/20/2022 1:11:48 PM Inj : 1
Inj Volume : 5.000 µl
Acq. Method : D:\Chem32\1\Data2022\20220120\2022.01.20 2022-01-20 10-30-48\AD,95,210NM.C2
.M
Last changed : 1/20/2022 1:10:56 PM by GJH_1472
(modified after loading)
Analysis Method : D:\Chem32\1\Data2022\20220120\2022.01.20 2022-01-20 10-30-48\AD,95,210NM.C2
.M (Sequence Method)
Last changed : 1/20/2022 2:33:17 PM by GJH_1472
(modified after loading)
Sample Info : LD1305_1-MIX
C-NP-77

Additional Info : Peak(s) manually integrated



=====
Area Percent Report
=====

Sorted By : Signal
Multiplier : 1.0000
Dilution : 1.0000
Do not use Multiplier & Dilution Factor with ISTDs

Signal 1: VWD1 A, Wavelength=210 nm

Peak #	RetTime [min]	Type	Width [min]	Area [mAU*s]	Height [mAU]	Area %
1	10.120	BB	0.2128	4356.55225	308.53366	69.4657
2	12.284	MM R	0.2884	1914.96082	110.65999	30.5343
Totals :				6271.51306	419.19365	

=====
*** End of Report ***