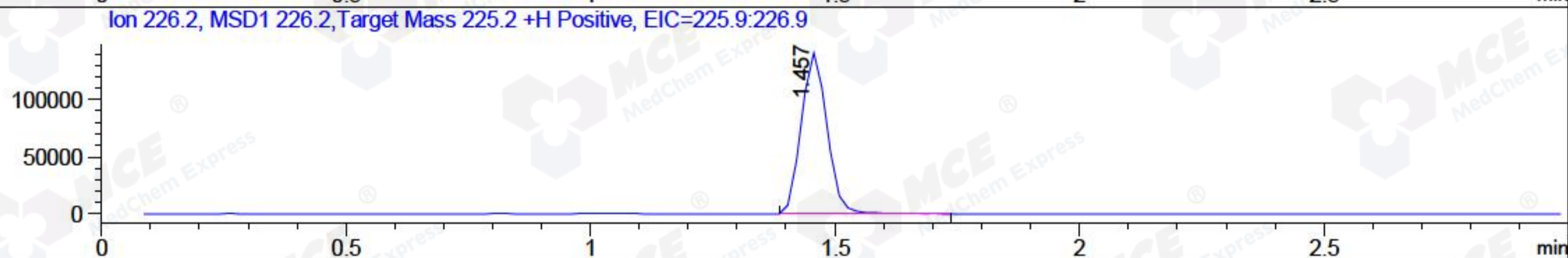
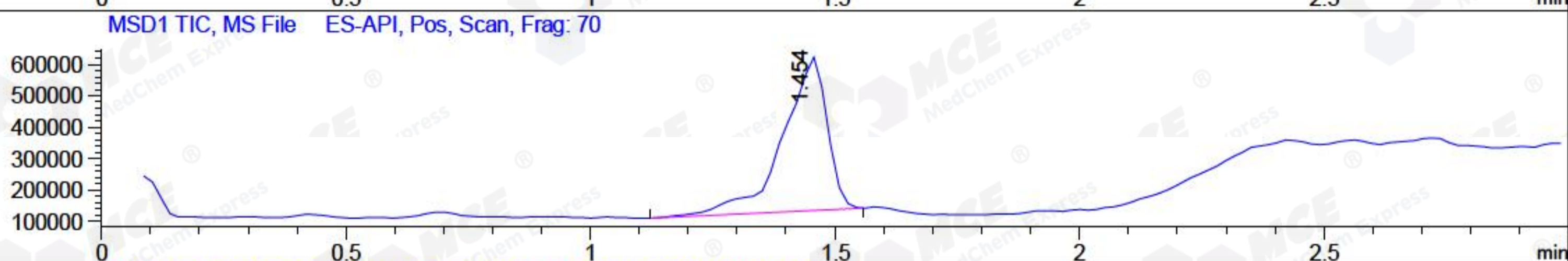
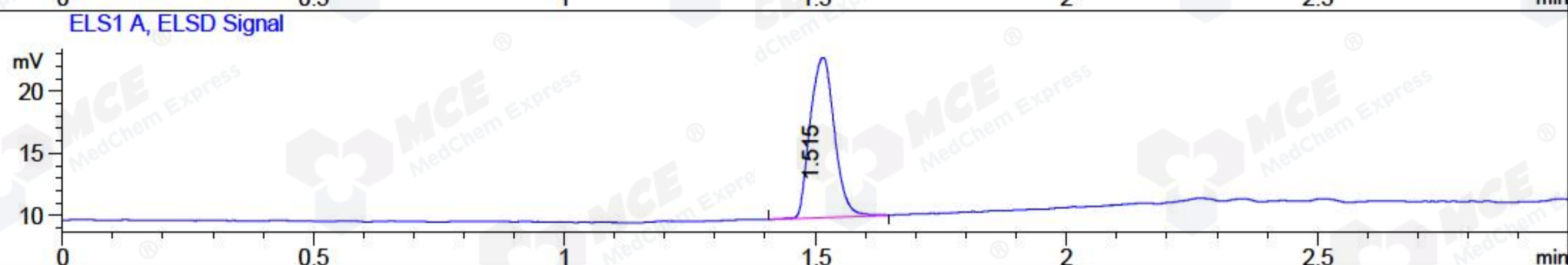
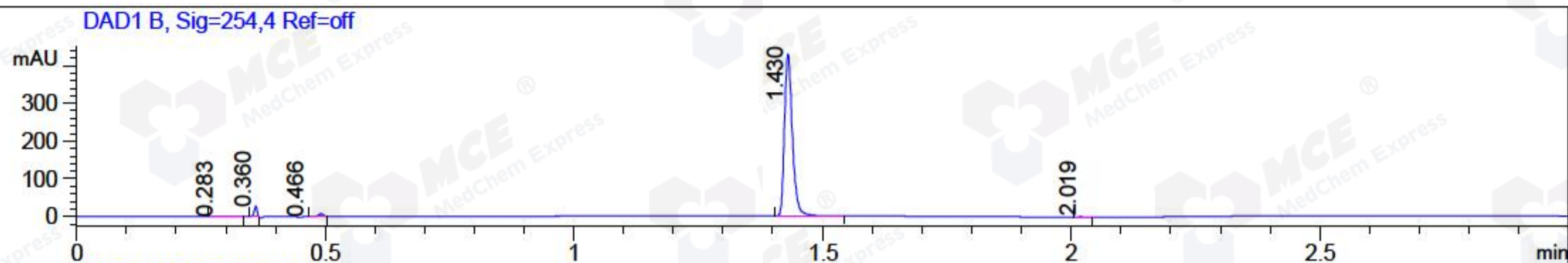


File ..018\20180515\20180515-2\CPK2018-514-17595.D Tgt Mass (CHM):
 Injection Date : 15 May 18 11:49 pm +0800 Seq. Line : 54
 Sample Name : CPK2018-514-17595 Location : P2-D-08
 Acq. Operator : SYSTEM Inj : 1
 Spec. Reported : MS Integration Inj Volume : 3 ul
 Acq. Method : D:\LCMS03\Data\2018\20180515\20180515-2\1-POS-3MIN.M
 Analysis Method : D:\LCMS03\Data\2018\20180515\20180515-2\1-POS-3MIN.M
 Catalog No : HY-B1336 Batch#17595
 Method Info : Mobile Phase: A: water(0.01%TFA) B:ACN(0.01%TFA)
 Gradient: 5% to 95%B within 1.3 min
 Flow Rate :1.8ml/min
 Column :SunFire C18, 4.6*50mm,3.5um A-RP-186
 Oven Temperature : 45C



Integration Results for DAD1 B, Sig=254,4 Ref=off

RetTim	Width	Area	Height	Area%	MS (+)
0.28	0.02	0.48	0.36	0.10	279
0.36	0.01	10.27	26.44	2.09	279
0.47	0.01	4.63	0.00	0.94	279
1.43	0.02	474.95	429.61	96.66	473
2.02	0.01	1.02	1.04	0.21	233

Integration Results for ELS1 A, ELSD Signal

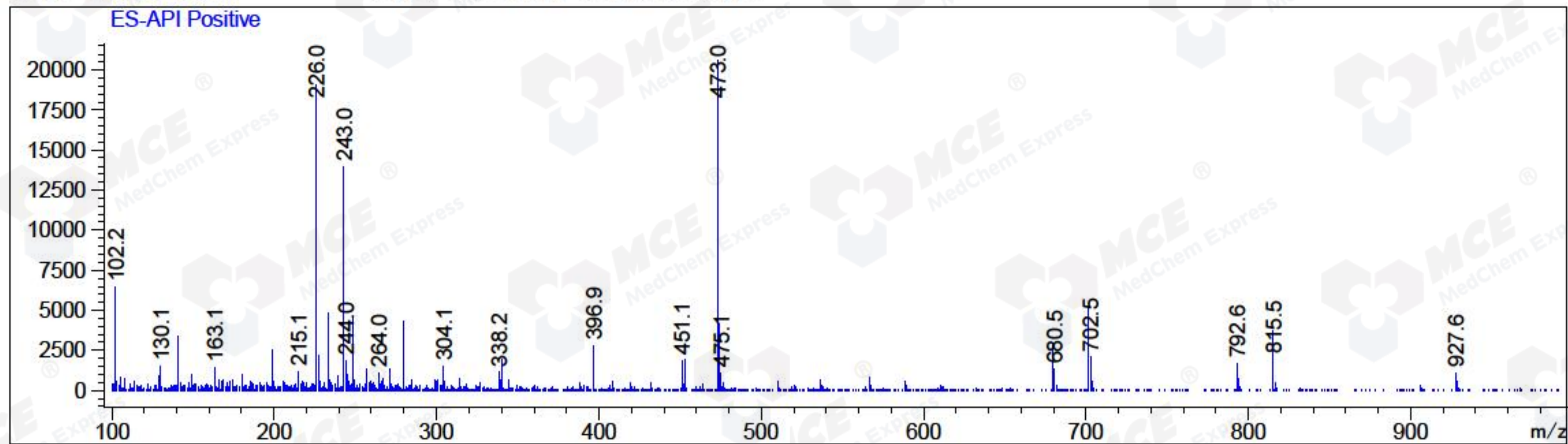
RetTim	Width	Area	Height	Area%	MS (+)
1.52	0.05	43.52	12.88	100.00	473

Integration Results for MSD1 TIC, MS File

RetTim	Width	Area	Height	Area%	MS (+)
1.45	0.09	3092862.75	491120.22	100.00	473

Ret. Time: 1.45

<<<< POSITIVE SPECTRA >>>>



*** End of Report ***