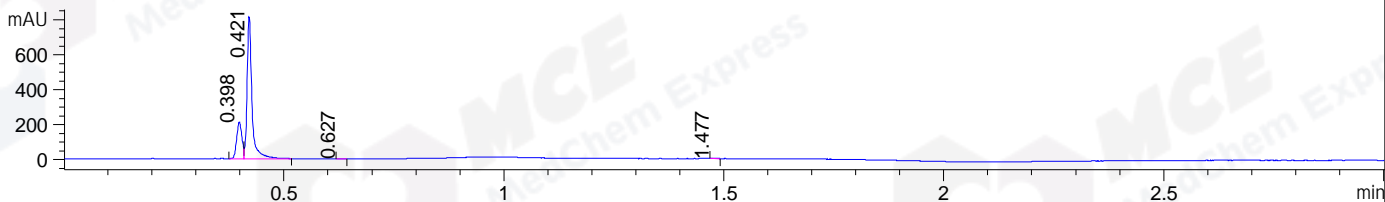
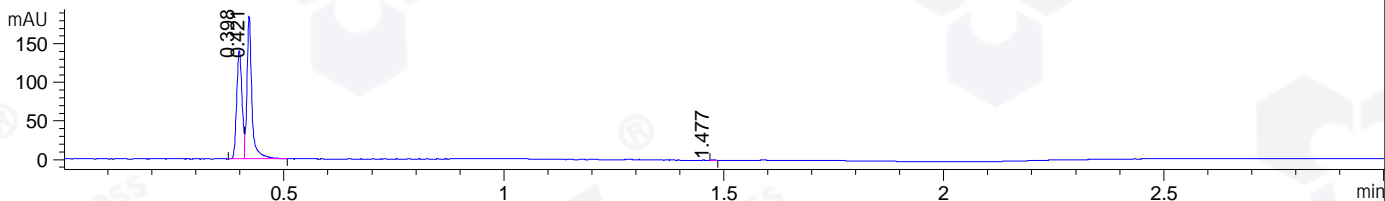


File ..DATA\2020\20200512\955\BIZ2020-511-CXL12.D Tgt Mass (CHM):  
 Injection Date : 12 May 20 2:53 pm +0800 Seq. Line : 67  
 Sample Name : BIZ2020-511-CXL12 Location : P1-C-06  
 Acq. Operator : ZJ\_1432 Inj : 1  
 Spec. Reported : MS Integration Inj Volume : 0.5 ul  
 Acq. Method : D:\Chem32\1\data\2020\20200512\955\1-POS-3MIN.M  
 Analysis Method : D:\CHEM32\1\DATA\2020\20200512\955\1-POS-3MIN.M  
 Catalog No : HY-B1815  
 Method Info : Mobile Phase: A: water(0.01%TFA) B:ACN(0.01%TFA)  
 Gradient: 5% to 95%B within 1.3 min  
 Flow Rate :1.8ml/min  
 Column :SunFire C18, 4.6\*50mm,3.5um A-RP-607  
 Oven Temperature : 45

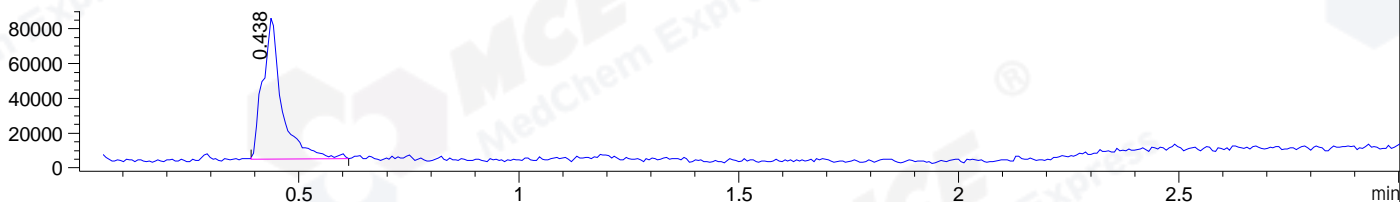
DAD1 B, Sig=214,4 Ref=off



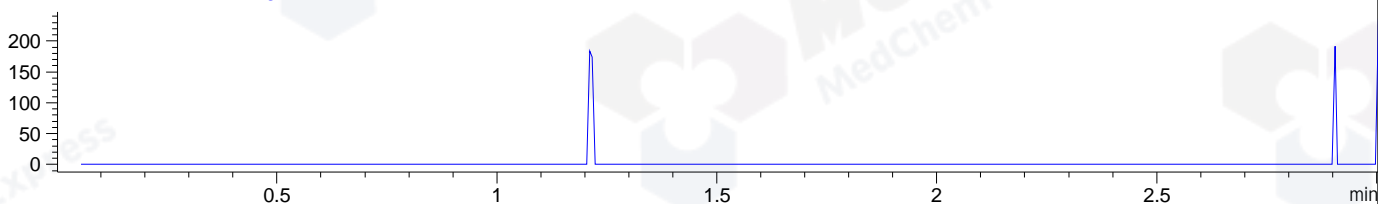
DAD1 C, Sig=254,4 Ref=off



MSD1 TIC, MS File ES-API, Pos, Scan, Frag: 70



Ion 435, MSD1 435, Target Mass 434 +H Positive, EIC=434.7:435.7



Integration Results for DAD1 B, Sig=214,4 Ref=off

RetTim	Width	Area	Height	Area%	MS (+)
0.40	0.01	175.35	208.27	21.80	124
0.42	0.01	627.73	815.78	78.03	312
0.63	0.02	0.72	0.76	0.09	264
1.48	0.01	0.68	0.98	0.08	130

Integration Results for DAD1 C, Sig=254,4 Ref=off

RetTim	Width	Area	Height	Area%	MS (+)
0.40	0.01	119.80	140.59	45.48	124
0.42	0.01	143.40	185.25	54.44	312
1.48	0.01	0.22	0.38	0.08	130

Integration Results for MSD1 TIC, MS File

RetTim	Width	Area	Height	Area%	MS (+)
0.44	0.04	249800.75	82044.53	100.00	312

Ret. Time: 0.44

<<<< POSITIVE SPECTRA >>>>

