

File ..\2018\20180622\20180622\CPK2018-621-18159.D Tgt Mass (CHM):

Injection Date : 22 Jun 18 10:58 am +0800 Seq. Line : 34

Sample Name : CPK2018-621-18159 Location : P1-C-02

Acq. Operator : SYSTEM Inj : 1

Spec. Reported : MS Integration Inj Volume : 1 ul

Acq. Method : D:\LCMS03\Data\2018\20180622\20180622\1-POS-3MIN-(100-2000).M

Analysis Method : D:\LCMS03\Data\2018\20180622\20180622\1-POS-3MIN-(100-2000).M

Catalog No : HY-B1831A Batch#18159

Method Info : Mobile Phase: A: water(0.01%TFA) B:ACN(0.01%TFA)

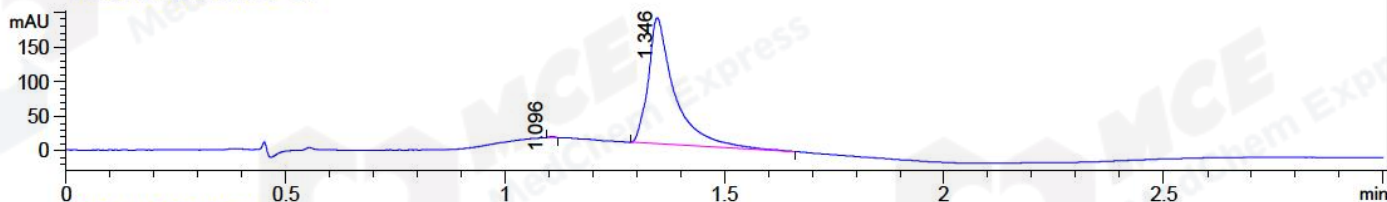
Gradient: 5% to 95%B within 1.3 min

Flow Rate :1.8ml/min

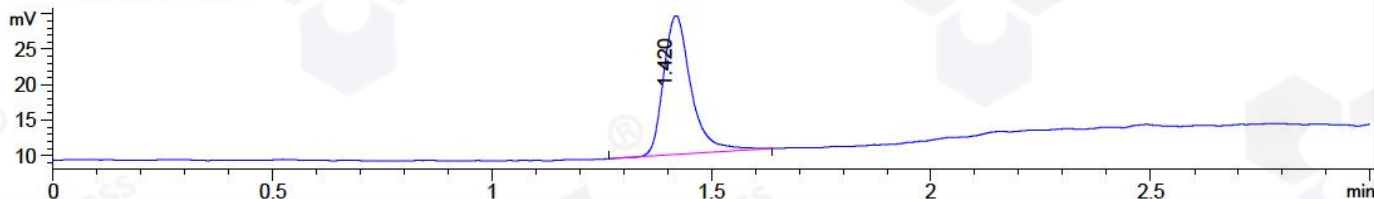
Column :SunFire C18, 4.6\*50mm,3.5um A-RP-186

Oven Temperature : 45C

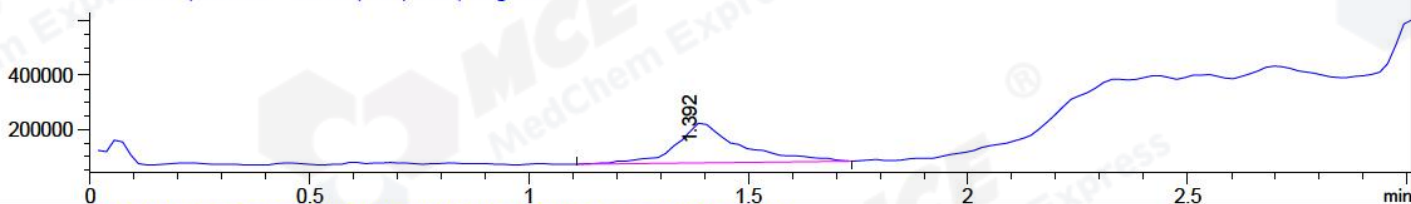
DAD1 A, Sig=214,4 Ref=off



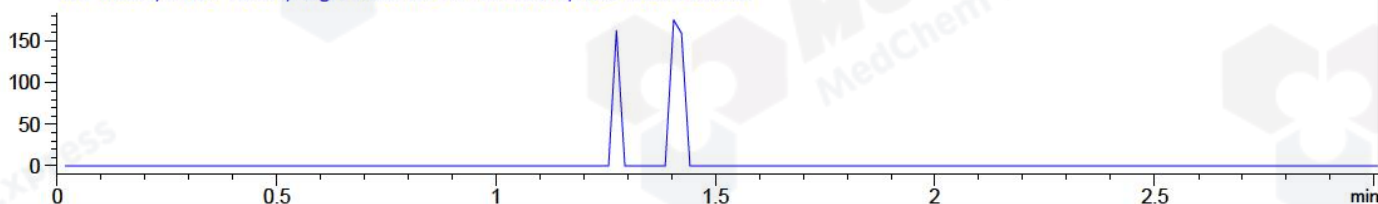
ELS1 A, ELSD Signal



MSD1 TIC, MS File ES-API, Pos, Scan, Frag: 120



Ion 1990.1, MSD1 1990.1, Target Mass 1989.1 +H Positive, EIC=1989.8:1990.8



Integration Results for DAD1 A, Sig=214,4 Ref=off

RetTim	Width	Area	Height	Area%	MS (+)
1.10	0.01	1.26	0.07	0.16	ND
1.35	0.07	765.83	182.51	99.84	897

Integration Results for ELS1 A, ELSD Signal

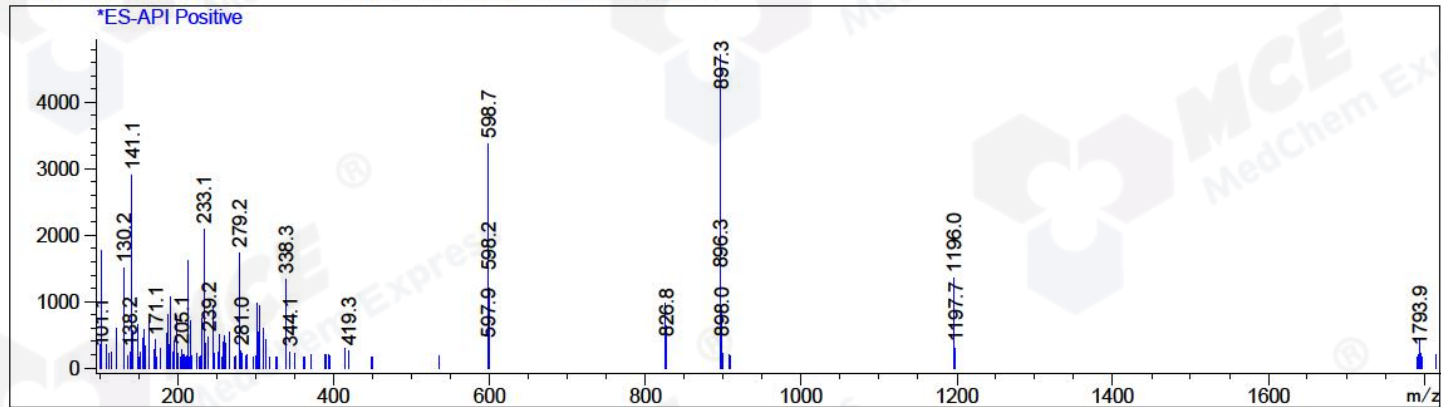
RetTim	Width	Area	Height	Area%	MS (+)
1.42	0.07	86.16	19.64	100.00	897

Integration Results for MSD1 TIC, MS File

RetTim	Width	Area	Height	Area%	MS (+)
1.39	0.14	1500620.13	148711.20	100.00	897

Ret. Time: 1.39

<<<< POSITIVE SPECTRA >>>>



\*\*\* End of Report \*\*\*