

File ..\2018\20180416\20180416\CPK2018-413-10058.D Tgt Mass (CHM):

Injection Date : 16 Apr 18 9:34 pm +0800 Seq. Line : 149

Sample Name : CPK2018-413-10058 Location : P2-E-11

Acq. Operator : SYSTEM Inj : 1

Spec. Reported : MS Integration Inj Volume : 1 ul

Acq. Method : D:\LCMS03\Data\2018\20180416\20180416\1-POS-3MIN.M

Analysis Method : D:\LCMS03\Data\2018\20180416\20180416\1-POS-3MIN.M

Catalog No : HY-N0003 Batch#10058

Method Info : Mobile Phase: A: water(0.01%TFA) B:ACN(0.01%TFA)

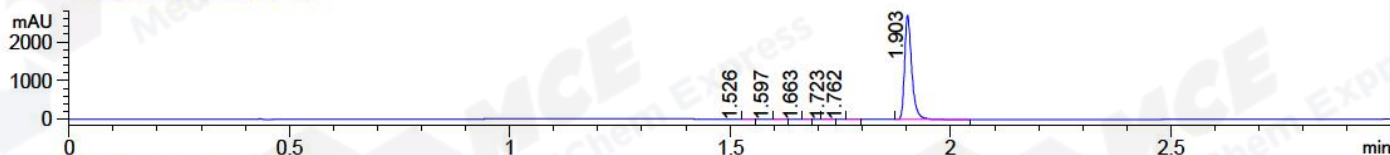
Gradient: 5% to 95%B within 1.3 min

Flow Rate :1.8ml/min

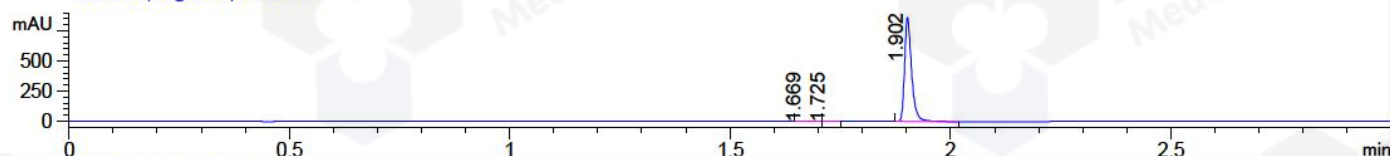
Column :SunFire C18, 4.6*50mm,3.5um A-RP-186

Oven Temperature : 45C

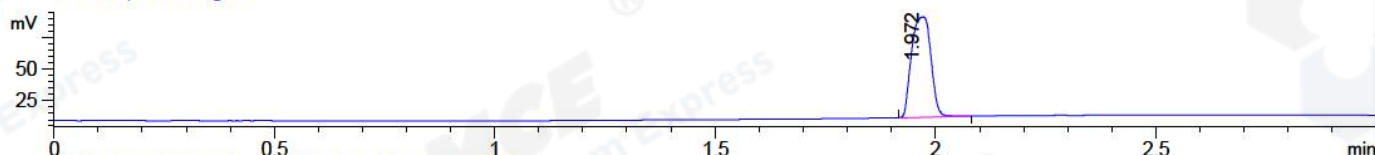
DAD1 A, Sig=214,4 Ref=off



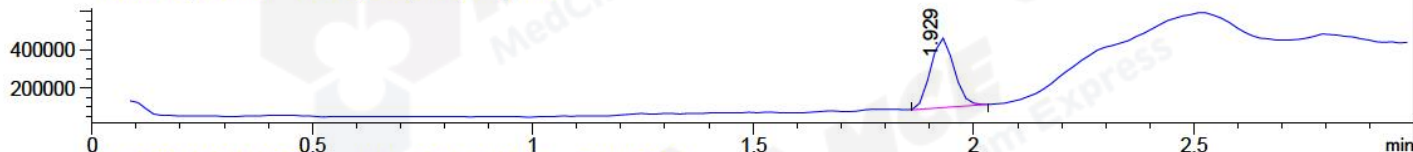
DAD1 B, Sig=254,4 Ref=off



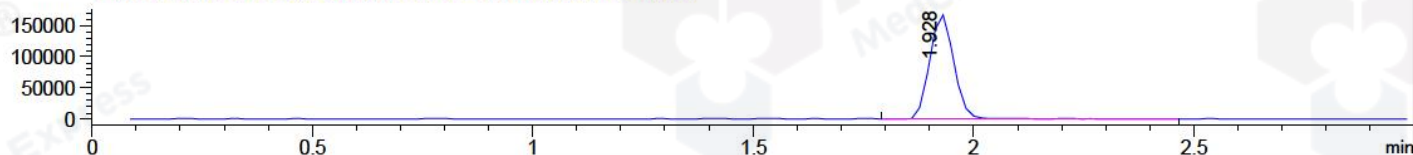
ELS1 A, ELSD Signal



MSD1 TIC, MS File ES-API, Pos, Scan, Frag: 70



Ion 267.3, MSD1 267.3, Target Mass 266.3 +H Positive, EIC=267:268



Integration Results for DAD1 A, Sig=214,4 Ref=off

RetTim	Width	Area	Height	Area%	MS (+)
1.53	0.02	0.46	0.00	0.01	233
1.60	0.03	0.63	0.14	0.02	233
1.66	0.02	0.41	0.26	0.01	233
1.72	0.02	0.75	0.58	0.02	233
1.76	0.02	0.79	0.05	0.03	233
1.90	0.02	3046.77	2685.44	99.90	267

Integration Results for DAD1 B, Sig=254,4 Ref=off

RetTim	Width	Area	Height	Area%	MS (+)
1.67	0.03	0.72	0.38	0.08	233
1.72	0.02	0.27	0.26	0.03	233
1.90	0.02	953.47	858.26	99.90	267

Integration Results for ELS1 A, ELSD Signal

RetTim	Width	Area	Height	Area%	MS (+)
--------	-------	------	--------	-------	--------

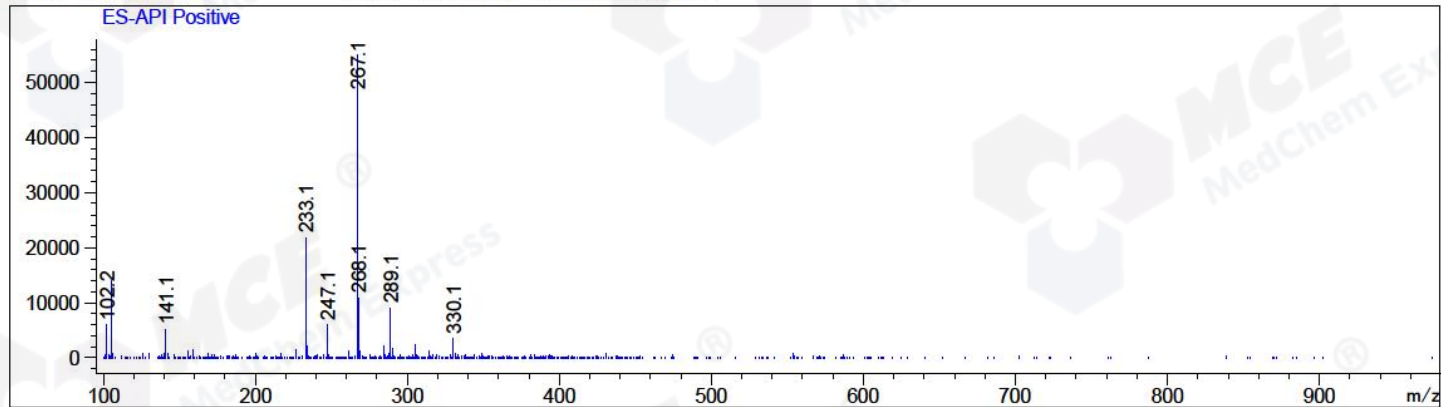
1.97 0.05 242.12 79.32 100.00 267

Integration Results for MSD1 TIC, MS File

RetTim	Width	Area	Height	Area%	MS(+)
1.93	0.06	1359521.00	363104.78	100.00	267

Ret. Time: 1.93

<<<< POSITIVE SPECTRA >>>>



*** End of Report ***