

File ..\DATA\2019\20191008\720\CPK2019-008-23287.D Tgt Mass (CHM):

Injection Date : 8 Oct 19 5:37 pm +0800 Seq. Line : 90

Sample Name : CPK2019-008-23287 Location : PL-E-02

Acq. Operator : ZJ\_1432 Inj : 1

Spec. Reported : MS Integration Inj Volume : 1 ul

Acq. Method : D:\Chem32\1\data\2019\20191008\720\1-POS-3MIN.M

Analysis Method : D:\CHEM32\1\DATA\2019\20191008\720\1-POS-3MIN.M

Catalog No : HY-N0144 Batch#23287

Method Info : Mobile Phase: A: water(0.01%TFA) B:ACN(0.01%TFA)

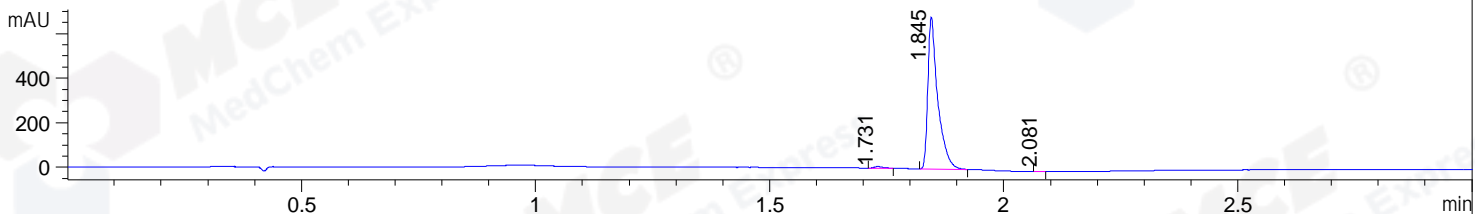
Gradient: 5% to 95%B within 1.3 min

Flow Rate :1.8ml/min

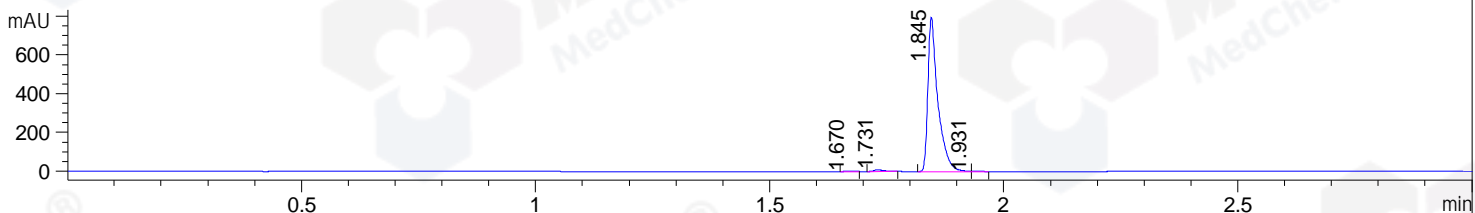
Column :SunFire C18, 4.6\*50mm,3.5um A-RP-433

Oven Temperature : 45□

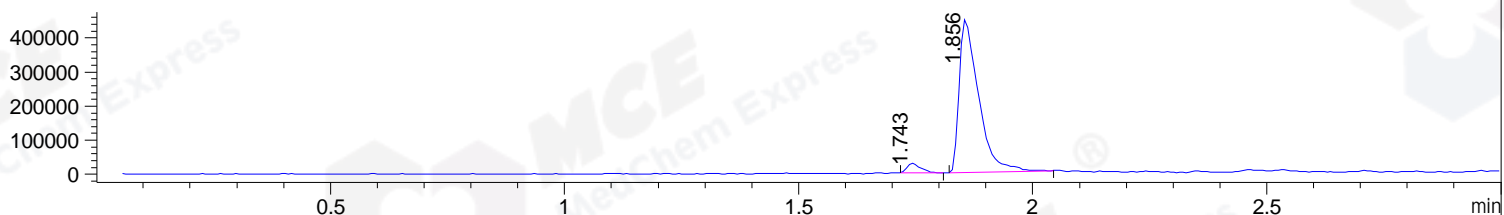
DAD1 B, Sig=214,4 Ref=off



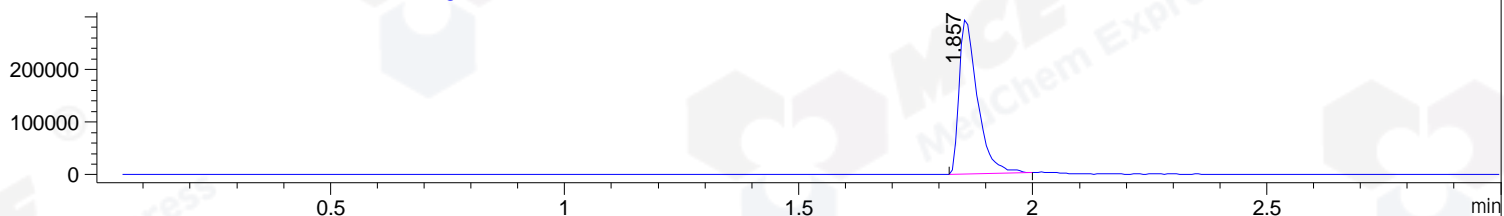
DAD1 C, Sig=254,4 Ref=off



MSD1 TIC, MS File ES-API, Pos, Scan, Frag: 70



Ion 286.13649, MSD1 286.13649, Target Mass 285.13649 +H Positive, EIC=285.84:286.84



## Integration Results for DAD1 B, Sig=214,4 Ref=off

RetTim	Width	Area	Height	Area%	MS (+)
1.73	0.02	9.79	7.78	0.96	272
1.85	0.02	1005.61	682.66	98.94	286
2.08	0.01	0.93	1.05	0.09	286

## Integration Results for DAD1 C, Sig=254,4 Ref=off

RetTim	Width	Area	Height	Area%	MS (+)
1.67	0.02	0.80	0.68	0.07	ND
1.73	0.02	13.12	9.54	1.10	272
1.85	0.02	1181.40	796.63	98.69	286
1.93	0.02	1.73	1.64	0.14	286

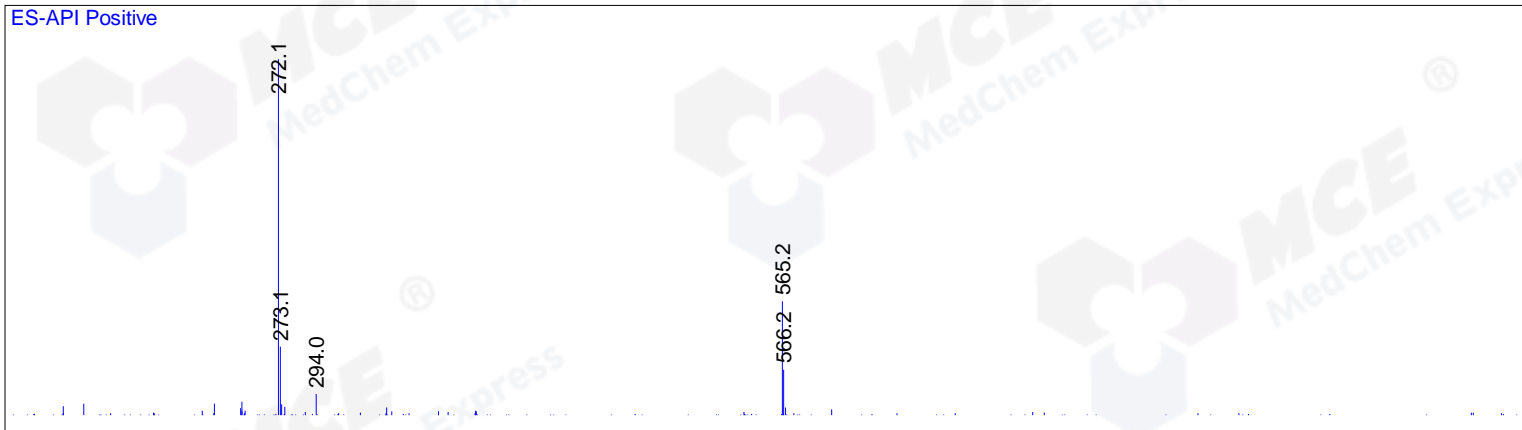
## Integration Results for MSD1 TIC, MS File

RetTim	Width	Area	Height	Area%	MS (+)
1.74	0.03	59580.99	28498.50	4.35	272
1.86	0.04	1310869.63	452564.13	95.65	286

Ret. Time: 1.74

<<<< POSITIVE SPECTRA >>>>

ES-API Positive



Ret. Time: 1.86

ES-API Positive

