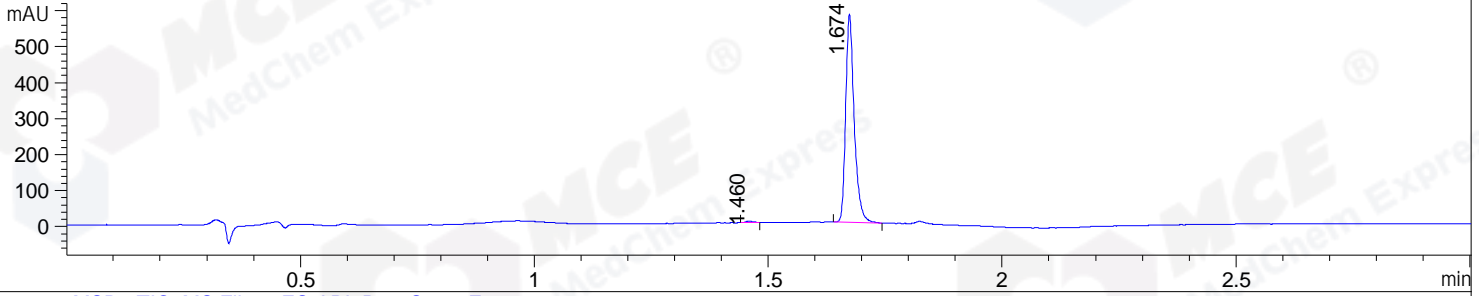
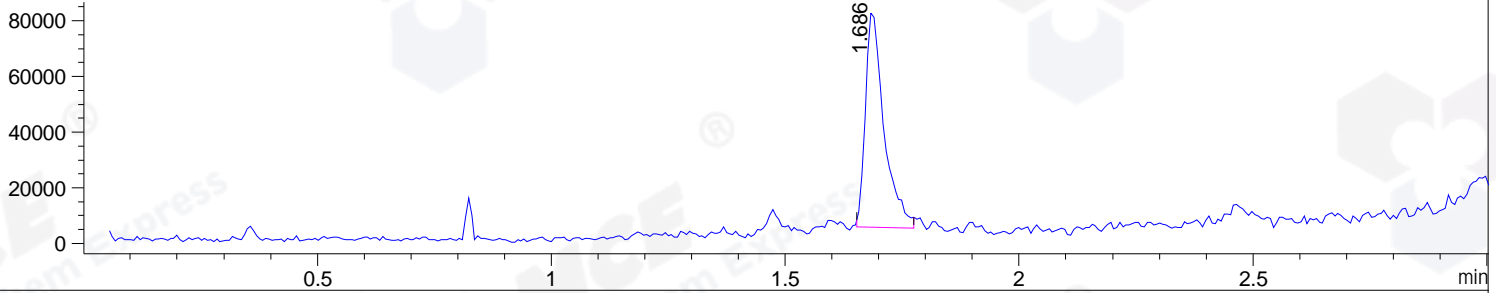


File ..1\DATA\2019\20191024\739\BIZ2019-O23-SCH2.D Tgt Mass (CHM):
 Injection Date : 24 Oct 19 12:59 pm +0800 Seq. Line : 2
 Sample Name : BIZ2019-O23-SCH2 Location : PL-A-05
 Acq. Operator : ZJ_1432 Inj : 1
 Spec. Reported : MS Integration Inj Volume : 5 ul
 Acq. Method : D:\Chem32\1\data\2019\20191024\739\1-POS-3MIN.M
 Analysis Method : D:\CHEM32\1\DATA\2019\20191024\739\1-POS-3MIN.M
 Catalog No : HY-N0246 Batch#49937
 Method Info : Mobile Phase: A: water(0.01%TFA) B:ACN(0.01%TFA)
 Gradient: 5% to 95%B within 1.3 min
 Flow Rate :1.8ml/min
 Column :SunFire C18, 4.6*50mm,3.5um A-RP-433
 Oven Temperature : 45

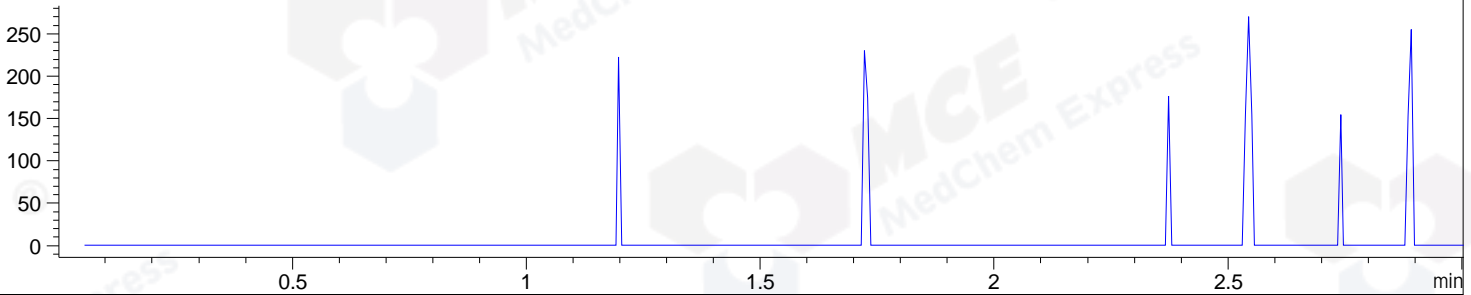
DAD1 B, Sig=214,4 Ref=off



MSD1 TIC, MS File ES-API, Pos, Scan, Frag: 70



Ion 781.47, MSD1 781.47, Target Mass 780.47 +H Positive, EIC=781.17:782.17



Integration Results for DAD1 B, Sig=214,4 Ref=off

RetTim	Width	Area	Height	Area%	MS (+)
1.46	0.02	4.24	3.59	0.57	ND
1.67	0.02	737.04	577.85	99.43	437

Integration Results for MSD1 TIC, MS File

RetTim	Width	Area	Height	Area%	MS (+)
1.69	0.04	214419.92	78302.63	100.00	437

Ret. Time: 1.69

<<<< POSITIVE SPECTRA >>>>

ES-API Positive

