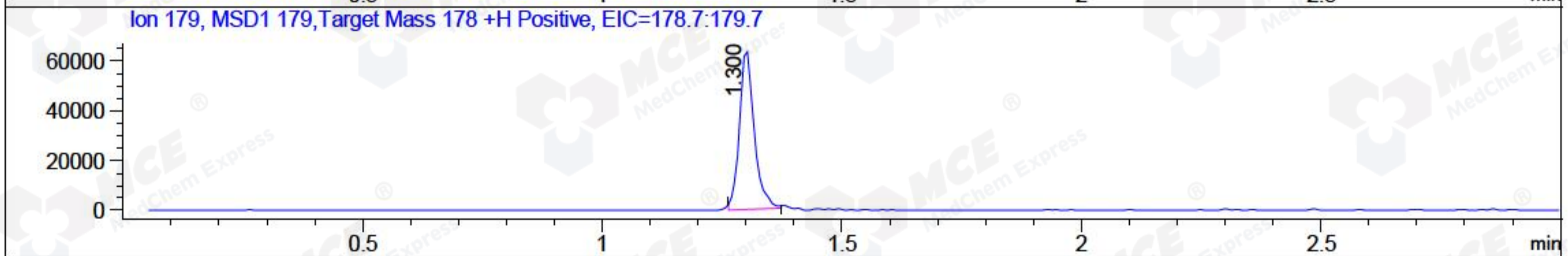
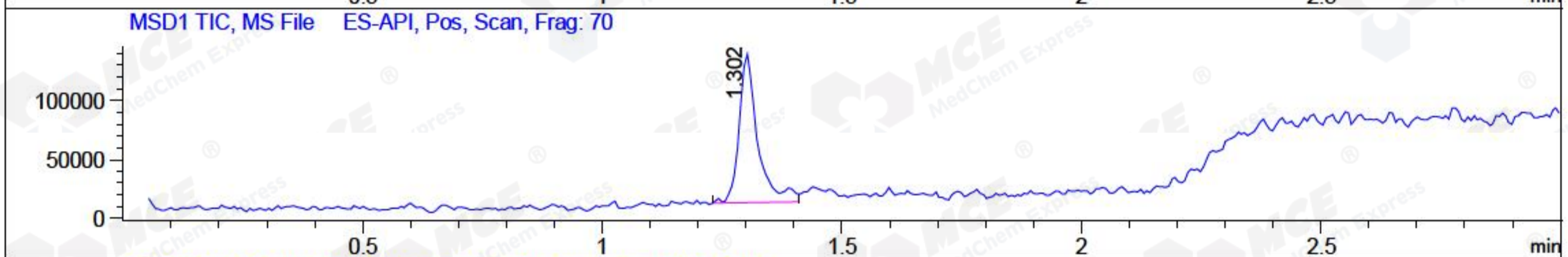
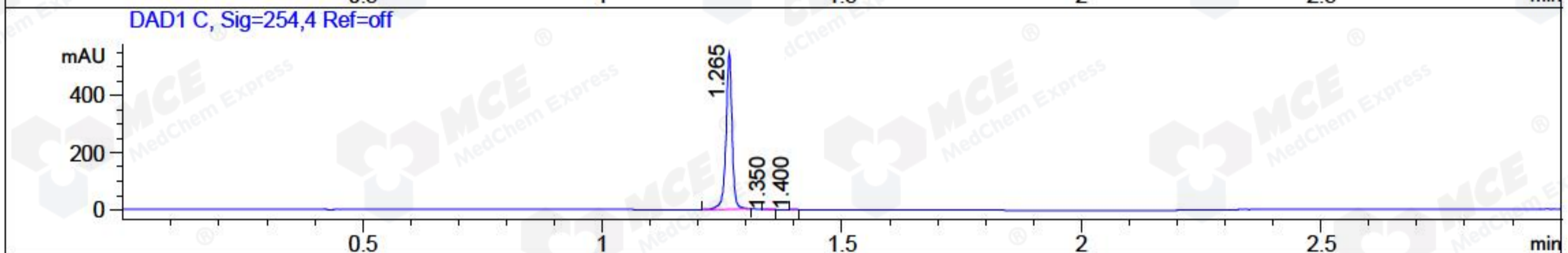
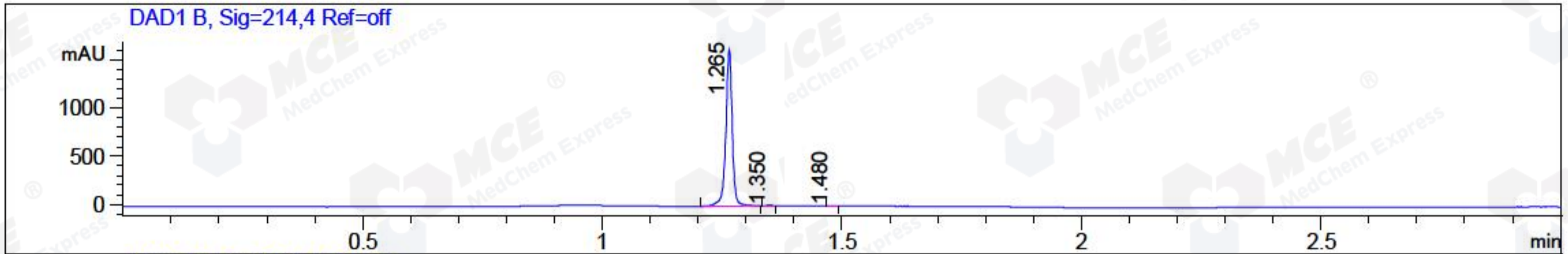


File ..\DATA\2018\20180822\348\BIZ2018-822-WYQ3.D Tgt Mass (CHM):
 Injection Date : 22 Aug 18 7:18 pm +0800 Seq. Line : 31
 Sample Name : BIZ2018-822-WYQ3 Location : P2-D-05
 Acq. Operator : LQ_1052 Inj : 1
 Spec. Reported : MS Integration Inj Volume : 0.4 ul
 Acq. Method : D:\Chem32\1\data\2018\20180822\348\1-POS-3MIN-1.M
 Analysis Method : D:\CHEM32\1\DATA\2018\20180822\348\1-POS-3MIN-1.M
 Catalog No : HY-N0281 Batch#32284 A-RP-314
 Method Info : Mobile Phase: A: water(0.01%TFA) B:ACN(0.01%TFA)
 Gradient: 5% to 95%B within 1.3 min
 Flow Rate :1.8ml/min
 Column :SunFire C18, 4.6*50mm,3.5um A-RP-314
 Oven Temperature : 45□



Integration Results for DAD1 B, Sig=214,4 Ref=off

RetTim	Width	Area	Height	Area%	MS (+)
1.27	0.02	1532.23	1629.67	99.55	179
1.35	0.01	5.34	6.52	0.35	179
1.48	0.02	1.66	1.70	0.11	141

Integration Results for DAD1 C, Sig=254,4 Ref=off

RetTim	Width	Area	Height	Area%	MS (+)
1.27	0.01	493.16	550.70	99.57	179
1.35	0.01	1.54	1.94	0.31	179
1.40	0.01	0.60	0.89	0.12	ND

Integration Results for MSD1 TIC, MS File

RetTim	Width	Area	Height	Area%	MS (+)
1.30	0.04	344723.00	126890.72	100.00	179

Ret. Time: 1.30

<<<< POSITIVE SPECTRA >>>>

