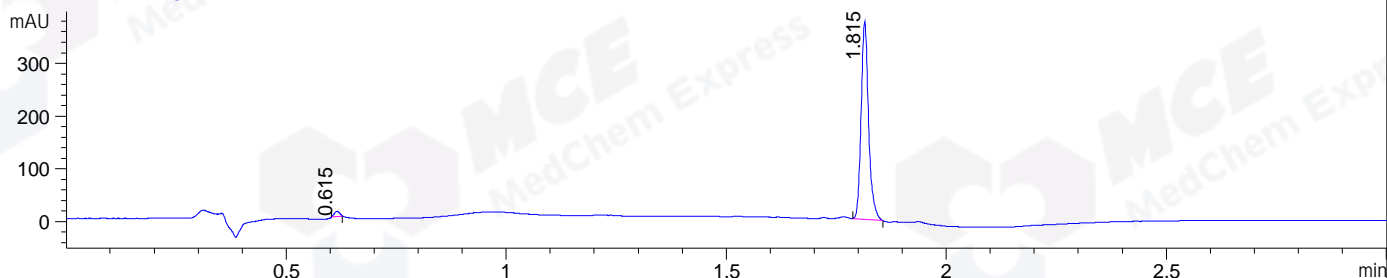
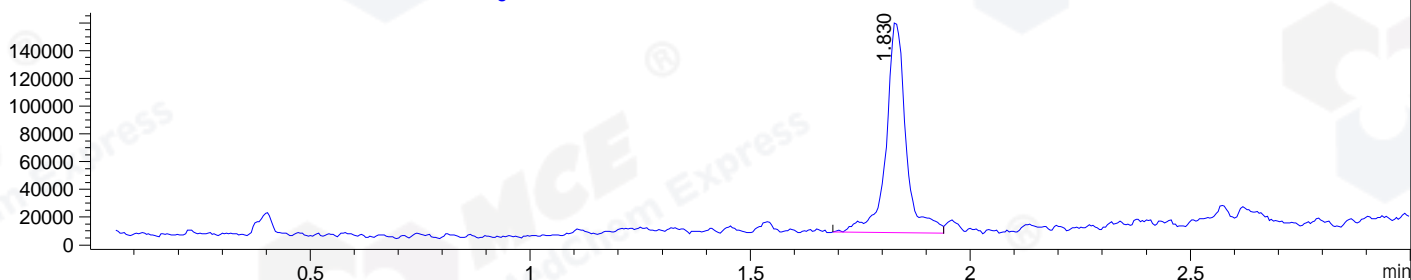


File ..DATA\2020\20201016\1128\BIZ2020-O13-WMX11.D Tgt Mass (CHM):
Injection Date : 16 Oct 20 2:22 pm +0800 Seq. Line : 57
Sample Name : BIZ2020-O13-WMX11 Location : P1-A-05
Acq. Operator : zyj_1547 Inj : 1
Spec. Reported : MS Integration Inj Volume : 20 ul
Acq. Method : D:\Chem32\1\data\2020\20201016\1128\1-POS-3MIN.M
Analysis Method : D:\CHEM32\1\DATA\2020\20201016\1128\1-POS-3MIN.M
CAS NO. : 14197-60-5
Method Info : Mobile Phase: A: water(0.01%TFA) B:ACN(0.01%TFA)
Gradient: 5% to 95%B within 1.3 min
Flow Rate :1.8ml/min
Column :SunFire C18, 4.6*50mm,3.5um A-RP-624

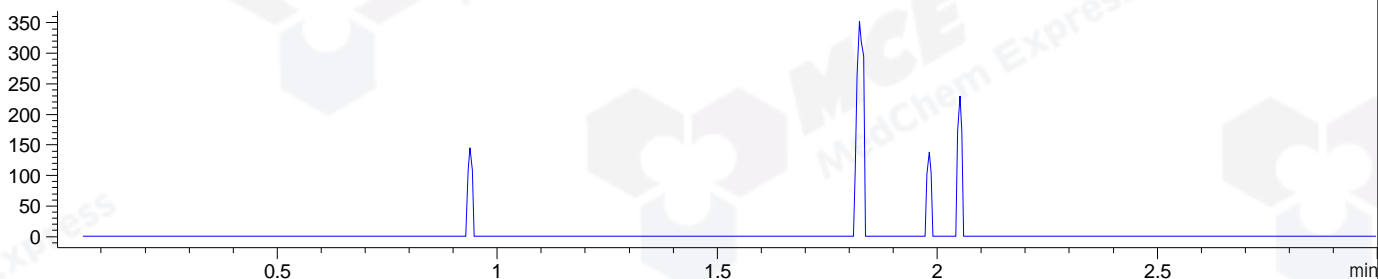
DAD1 B, Sig=214,4 Ref=off



MSD1 TIC, MS File ES-API, Pos, Scan, Frag: 70



Ion 785, MSD1 785, Target Mass 784 +H Positive, EIC=784.7:785.7



Integration Results for DAD1 B, Sig=214,4 Ref=off

RetTim	Width	Area	Height	Area%	MS(+)
0.62	0.01	8.59	10.20	1.90	328
1.81	0.02	443.40	375.08	98.10	407

Integration Results for MSD1 TIC, MS File

RetTim	Width	Area	Height	Area%	MS(+)
1.83	0.05	474720.22	152217.77	100.00	407

Ret. Time: 1.83

<<<< POSITIVE SPECTRA >>>>

ES-API Positive

