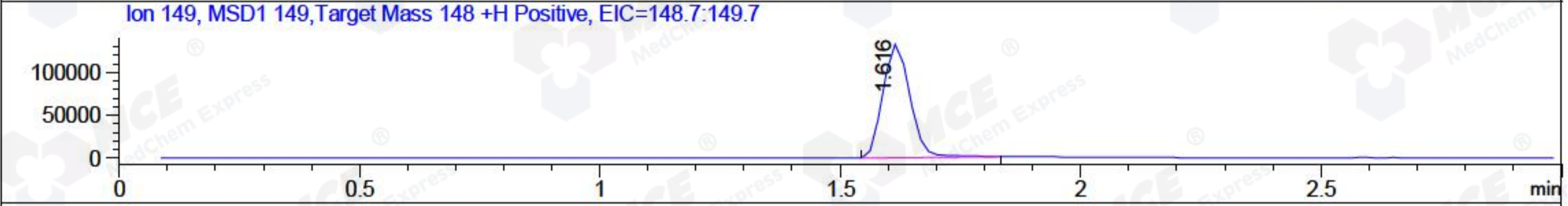
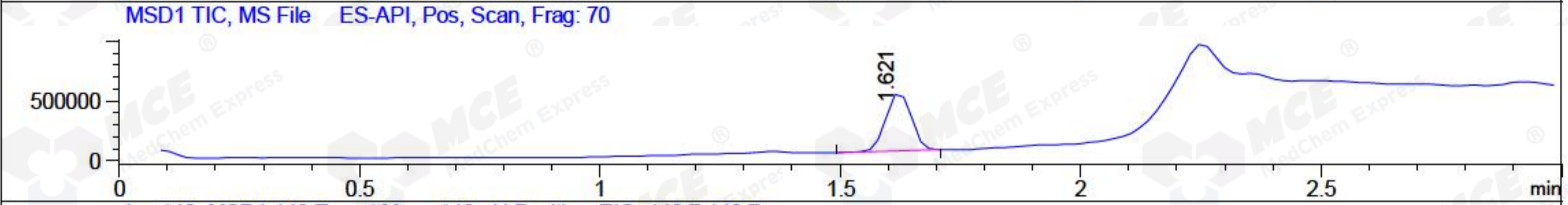
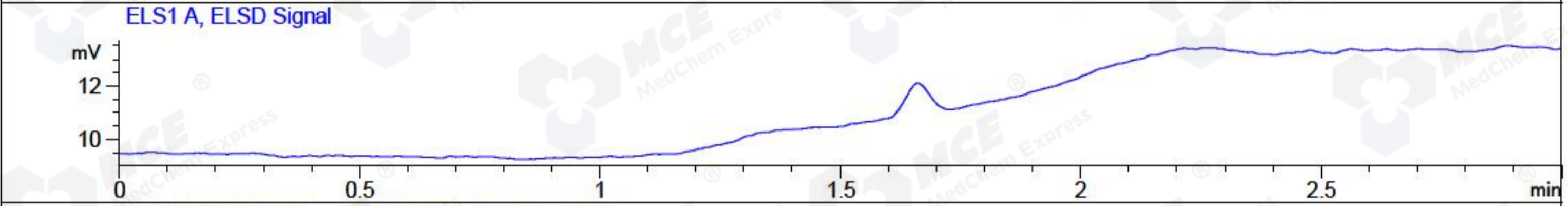
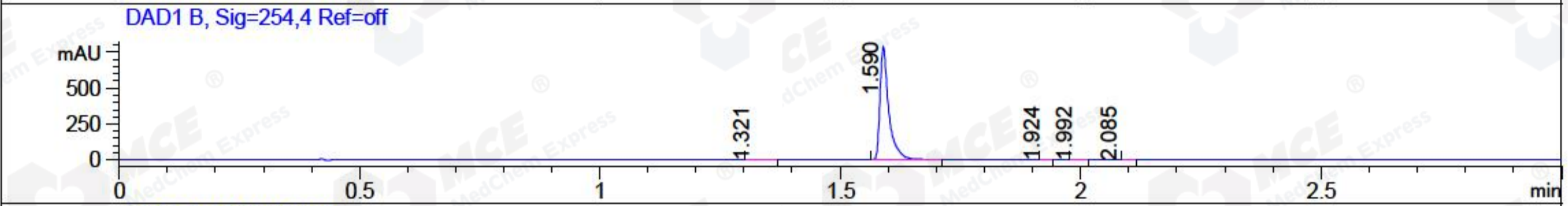
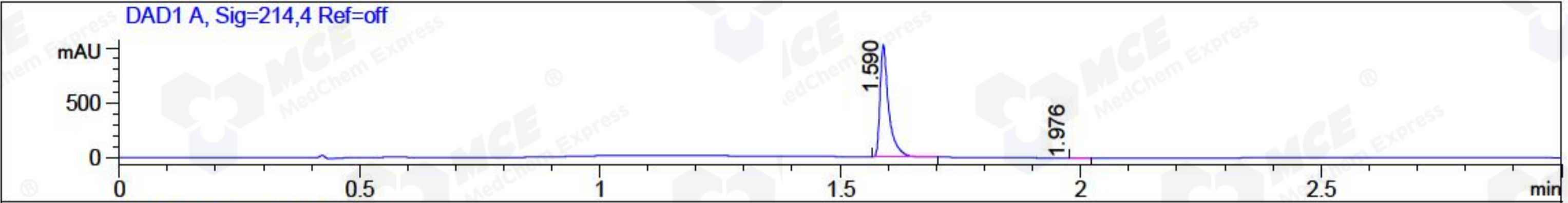


File ..ata\20171201\20171201-2\BIZ2017-D01-WYQ13.D Tgt Mass (CHM):
 Injection Date : 1 Dec 17 9:47 pm +0800 Seq. Line : 130
 Sample Name : BIZ2017-D01-WYQ13 Location : P1-B-06
 Acq. Operator : ZLJ_587 Inj : 1
 Spec. Reported : MS Integration Inj Volume : 1 ul
 Acq. Method : D:\LCMS03\Data\20171201\20171201-2\1-POS-3MIN.M
 Analysis Method : D:\LCMS03\Data\20171201\20171201-2\1-POS-3MIN.M
 Catalog No : HY-N0610 Batch#27588
 Method Info : Mobile Phase: A: water(0.01%TFA) B:ACN(0.01%TFA)
 Gradient: 5% to 95%B within 1.3 min
 Flow Rate : 1.8ml/min
 Column :SunFire C18, 4.6*50mm,3.5um A-RP-186
 Oven Temperature : 45C



Integration Results for DAD1 A, Sig=214,4 Ref=off

RetTim	Width	Area	Height	Area%	MS (+)
1.59	0.02	1265.45	1014.66	99.91	149
1.98	0.03	1.19	0.12	0.09	233

Integration Results for DAD1 B, Sig=254,4 Ref=off

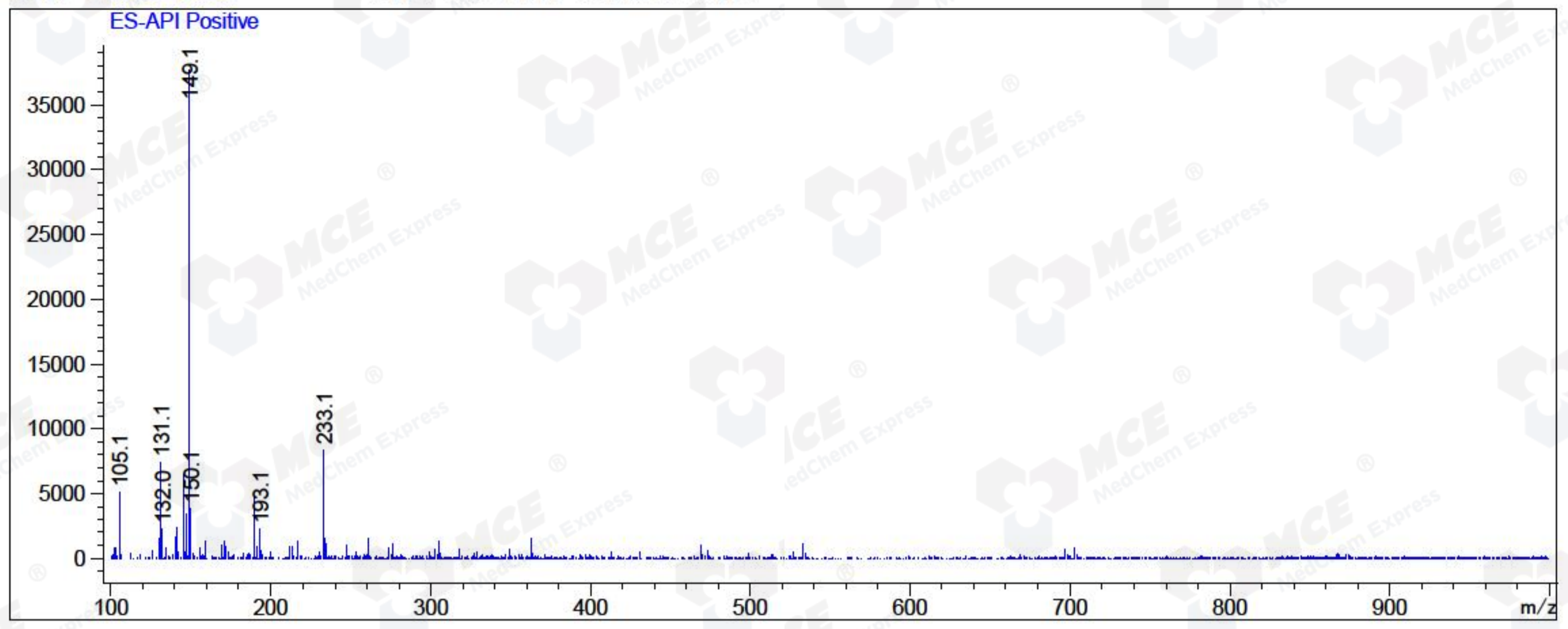
RetTim	Width	Area	Height	Area%	MS (+)
1.32	0.03	1.99	1.04	0.20	176
1.59	0.02	986.26	785.87	99.74	149
1.92	0.02	0.23	0.21	0.02	233
1.99	0.03	0.25	0.16	0.03	233
2.09	0.01	0.09	0.02	0.01	105

Integration Results for MSD1 TIC, MS File

RetTim	Width	Area	Height	Area%	MS (+)
1.62	0.06	1767558.25	488430.31	100.00	149

Ret. Time: 1.62

<<<< POSITIVE SPECTRA >>>>



*** End of Report ***