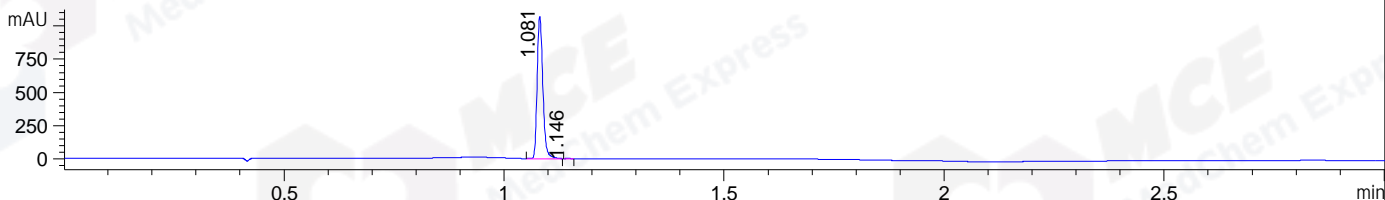
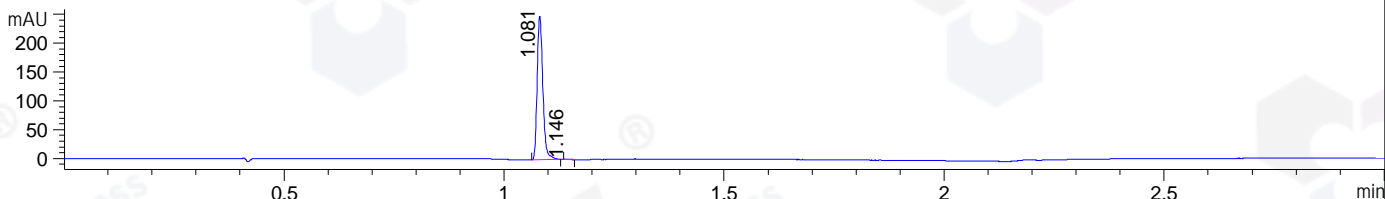


File ..DATA\2020\20201113\1152\CPK2020-N11-17337.D Tgt Mass (CHM):  
Injection Date : 13 Nov 20 9:01 pm +0800 Seq. Line : 132  
Sample Name : CPK2020-N11-17337 Location : P1-E-05  
Acq. Operator : zyj\_1547 Inj : 1  
Spec. Reported : MS Integration Inj Volume : 1 ul  
Acq. Method : D:\Chem32\1\data\2020\20201113\1152\1-POS-3MIN.M  
Analysis Method : D:\CHEM32\1\DATA\2020\20201113\1152\1-POS-3MIN.M  
CAS NO. : 102841-42-9  
Method Info : Mobile Phase: A: water(0.01%TFA) B:ACN(0.01%TFA)  
Gradient: 5% to 95%B within 1.3 min  
Flow Rate :1.8ml/min  
Column :SunFire C18, 4.6\*50mm,3.5um A-RP-698

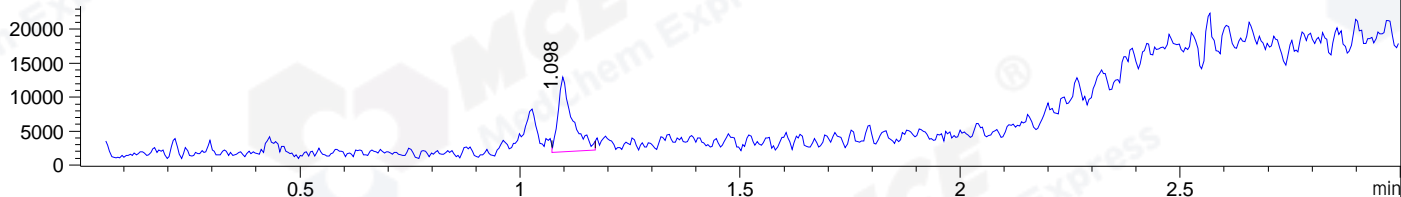
DAD1 B, Sig=214,4 Ref=off



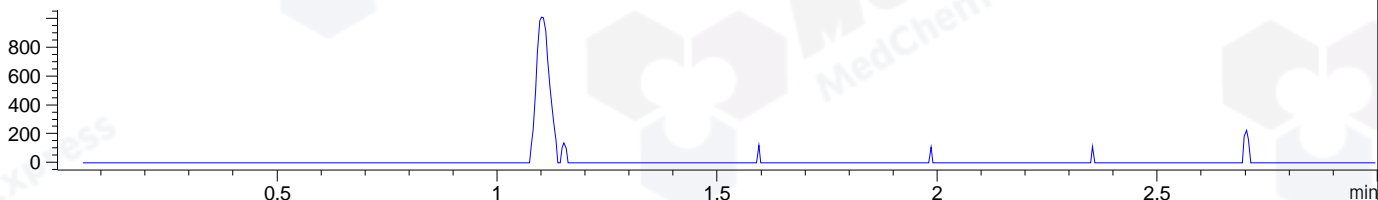
DAD1 C, Sig=254,4 Ref=off



MSD1 TIC, MS File ES-API, Pos, Scan, Frag: 70



Ion 569, MSD1 569, Target Mass 568 +H Positive, EIC=568.7:569.7



## Integration Results for DAD1 B, Sig=214,4 Ref=off

RetTim	Width	Area	Height	Area%	MS(+)
1.08	0.01	957.11	1069.53	99.75	407
1.15	0.01	2.43	3.28	0.25	ND

## Integration Results for DAD1 C, Sig=254,4 Ref=off

RetTim	Width	Area	Height	Area%	MS(+)
1.08	0.01	222.41	249.27	99.67	407
1.15	0.01	0.73	0.98	0.33	ND

## Integration Results for MSD1 TIC, MS File

RetTim	Width	Area	Height	Area%	MS(+)
1.10	0.03	24644.79	10977.13	100.00	407

Ret. Time: 1.10

<<<< POSITIVE SPECTRA >>>>

