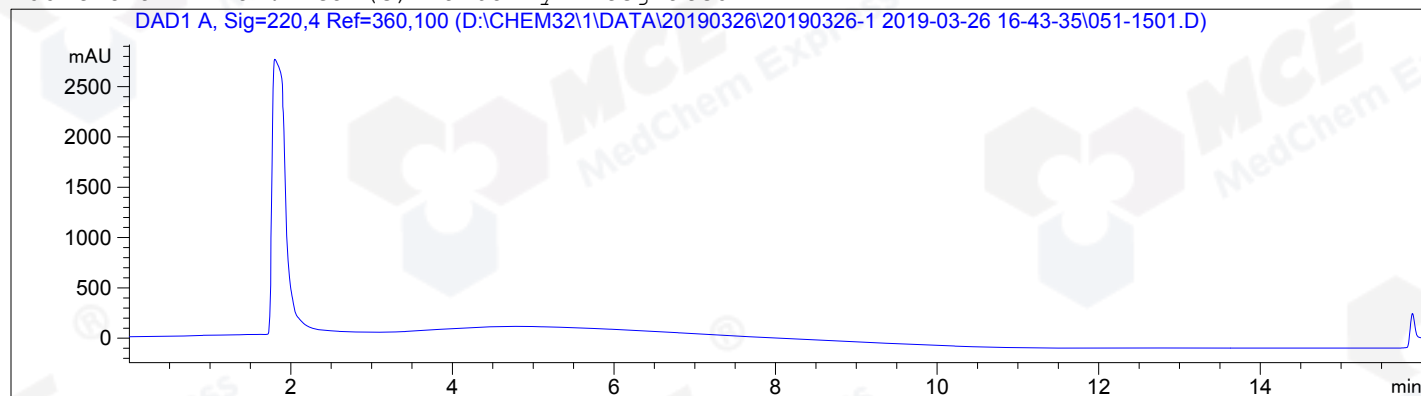


=====  
Acq. Operator : ZQQ Seq. Line : 15  
Acq. Instrument : HPLC-12 Location : Vial 51  
Injection Date : 3/26/2019 21:54:27 Inj : 1  
Inj Volume : 5.0 µl  
Acq. Method : D:\CHEM32\1\DATA\20190326\20190326-1 2019-03-26 16-43-35\10-90A.M  
Last changed : 3/26/2019 16:25:01 by ZQQ  
Analysis Method : D:\CHEM32\1\METHOD\HY-19745-H01P02 (RP-HPLC) .M  
Last changed : 3/27/2019 8:35:23 by ZQQ  
(modified after loading)  
Catalog No : HY-P0055A Batch#39339  
A-RP-301

Additional Info : Peak(s) manually integrated



=====  
Area Percent Report  
=====

Sorted By : Signal  
Multiplier: : 1.0000  
Dilution: : 1.0000  
Use Multiplier & Dilution Factor with ISTDs

No peaks found

=====  
\*\*\* End of Report \*\*\*

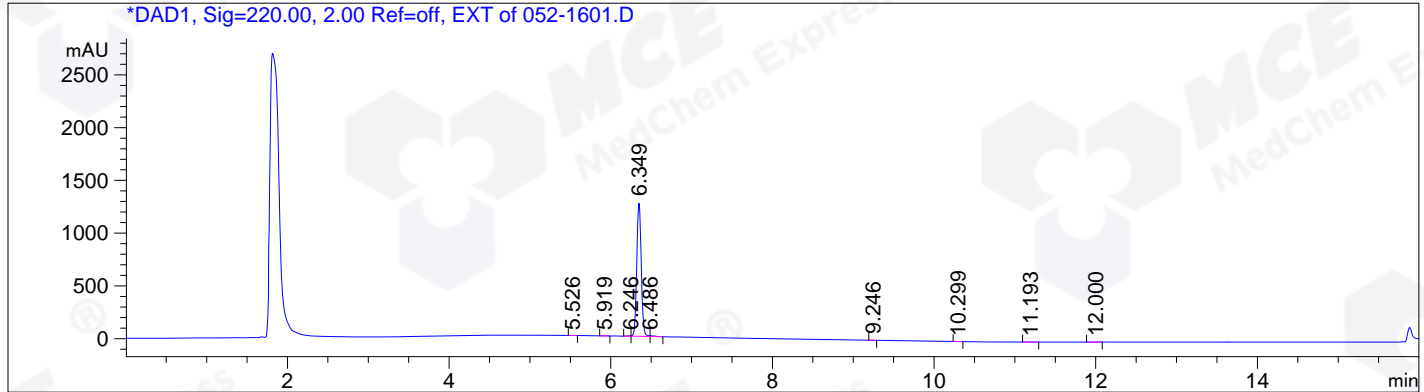
```

=====
Acq. Operator   : ZQQ                               Seq. Line :   16
Acq. Instrument : HPLC-12                           Location  : Vial 52
Injection Date  : 3/26/2019 22:12:08                 Inj       :    1
                                                    Inj Volume: 5.0 µl

Acq. Method    : D:\CHEM32\1\DATA\20190326\20190326-1 2019-03-26 16-43-35\10-90A.M
Last changed   : 3/26/2019 16:25:01 by ZQQ
Analysis Method: D:\CHEM32\1\METHOD\HY-19745-H01P02 (RP-HPLC) .M
Last changed   : 3/27/2019 8:55:54 by ZQQ
                (modified after loading)

Catalog No     : HY-P0055A Batch#39339
                A-RP-301
    
```

Additional Info : Peak(s) manually integrated



Area Percent Report

```

=====
Sorted By      :      Signal
Multiplier:    :      1.0000
Dilution:      :      1.0000
Use Multiplier & Dilution Factor with ISTDs
    
```

Signal 1: DAD1, Sig=220.00, 2.00 Ref=off, EXT  
 Signal has been modified after loading from rawdata file!

Peak #	RetTime [min]	Type	Width [min]	Area [mAU*s]	Height [mAU]	Area %
1	5.526	MM	0.0657	2.09569	5.31942e-1	0.0425
2	5.919	MM	0.0727	1.45777	3.34212e-1	0.0296
3	6.246	MF	0.0556	11.83997	3.54823	0.2400
4	6.349	FM R	0.0637	4866.29297	1272.62903	98.6561
5	6.486	FM R	0.0676	26.98373	6.65179	0.5471
6	9.246	MM	0.0537	2.22125	6.89608e-1	0.0450
7	10.299	MM	0.0610	4.04772	1.10607	0.0821
8	11.193	MM	0.1019	4.30431	7.03848e-1	0.0873
9	12.000	MM R	0.0773	13.33659	2.87590	0.2704

Totals : 4932.58002 1289.07063

\*\*\* End of Report \*\*\*