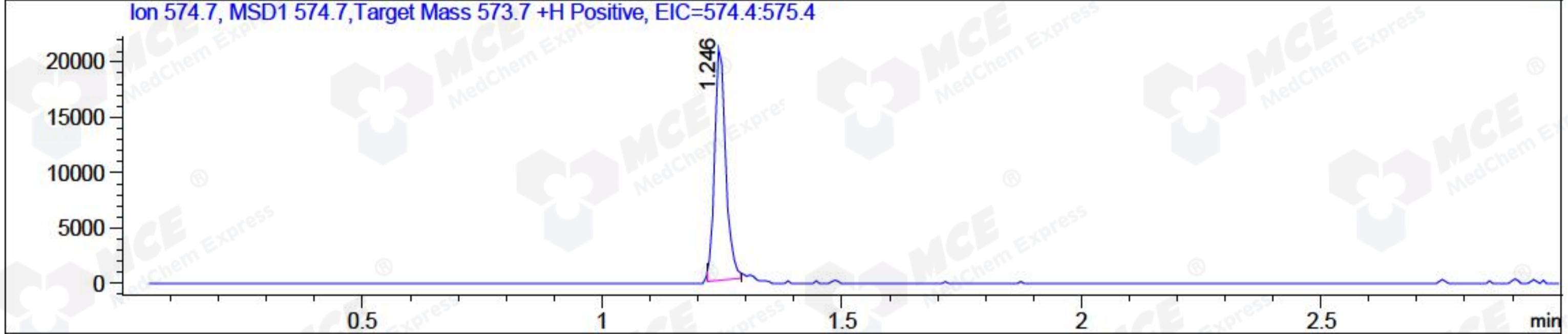
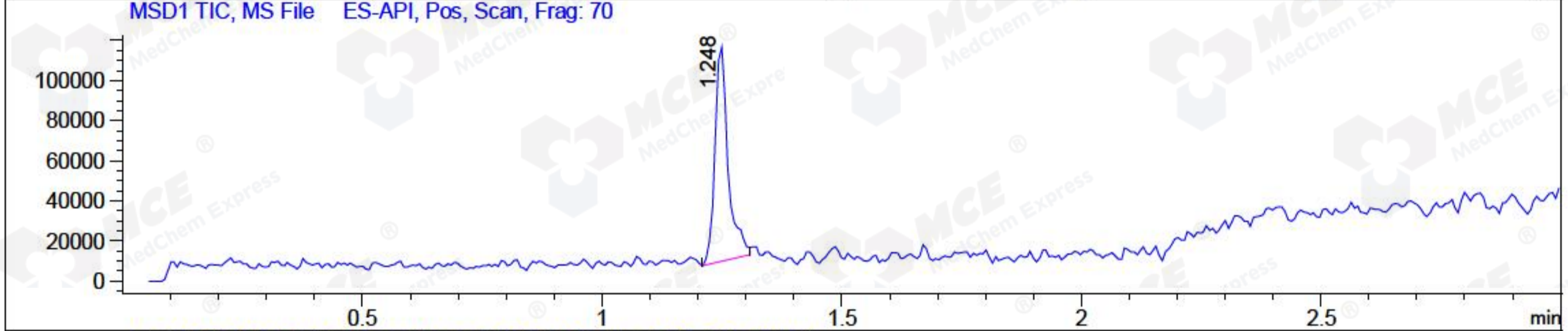
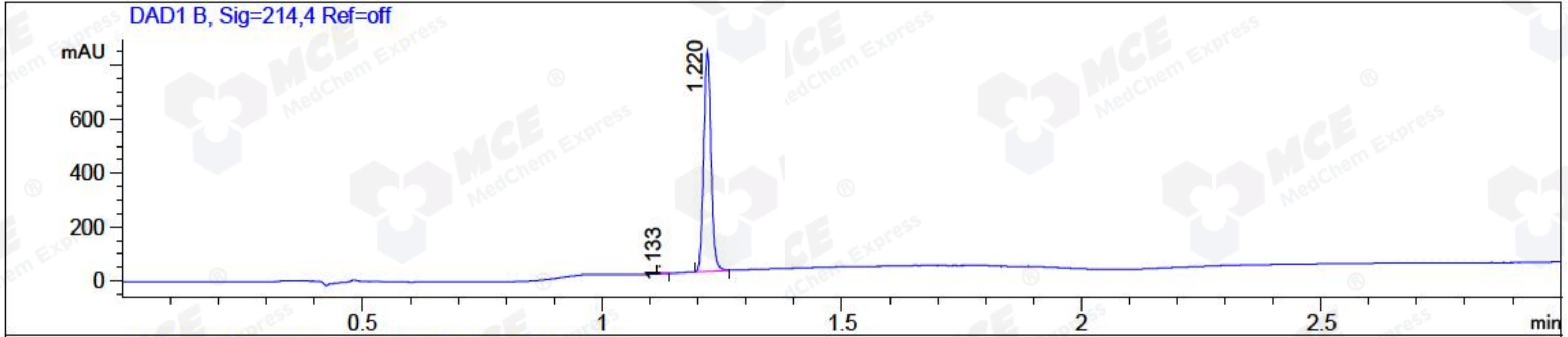


File ..\DATA\2018\20181124\497\CPK2018-N23-19656.D Tgt Mass (CHM):  
 Injection Date : 24 Nov 18 9:34 am +0800 Seq. Line : 7  
 Sample Name : CPK2018-N23-19656 Location : P1-A-07  
 Acq. Operator : LQ\_1052 Inj : 1  
 Spec. Reported : MS Integration Inj Volume : 1 ul  
 Acq. Method : D:\Chem32\1\data\2018\20181124\497\1-POS-3MIN-1.M  
 Analysis Method : D:\CHEM32\1\DATA\2018\20181124\497\1-POS-3MIN-1.M  
 Catalog No : HY-P0073 Batch#19656 A-RP-314  
 Method Info : Mobile Phase: A: water(0.01%TFA) B:ACN(0.01%TFA)  
 Gradient: 5% to 95%B within 1.3 min  
 Flow Rate :1.8ml/min  
 Column :SunFire C18, 4.6\*50mm,3.5um A-RP-314  
 Oven Temperature : 45□



Integration Results for DAD1 B, Sig=214,4 Ref=off

RetTim	Width	Area	Height	Area%	MS (+)
1.13	0.01	1.72	1.48	0.19	ND
1.22	0.02	894.20	816.32	99.81	574

Integration Results for MSD1 TIC, MS File

RetTim	Width	Area	Height	Area%	MS (+)
1.25	0.03	205569.56	108047.42	100.00	574

Ret. Time: 1.25

<<<< POSITIVE SPECTRA >>>>

ES-API Positive

