

File ..DATA\2019\20190311\553\BIZ2019-308-WYQ16.D Tgt Mass (CHM):

Injection Date : 11 Mar 19 1:08 pm +0800 Seq. Line : 44

Sample Name : BIZ2019-308-WYQ16 Location : P2-E-04

Acq. Operator : LQ_1052 Inj : 1

Spec. Reported : MS Integration Inj Volume : 5 ul

Acq. Method : D:\Chem32\1\data\2019\20190311\553\1-POS-3MIN-1(110-1500).M

Analysis Method : D:\CHEM32\1\DATA\2019\20190311\553\1-POS-3MIN-1(110-1500).M

Catalog No : HY-P0097A Batch#38797

Method Info : Mobile Phase: A: water(0.01%TFA) B:ACN(0.01%TFA)

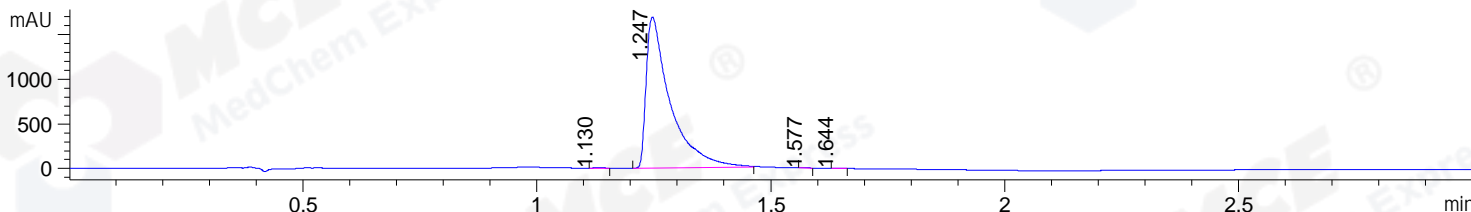
Gradient: 5% to 95%B within 1.3 min

Flow Rate :1.8ml/min

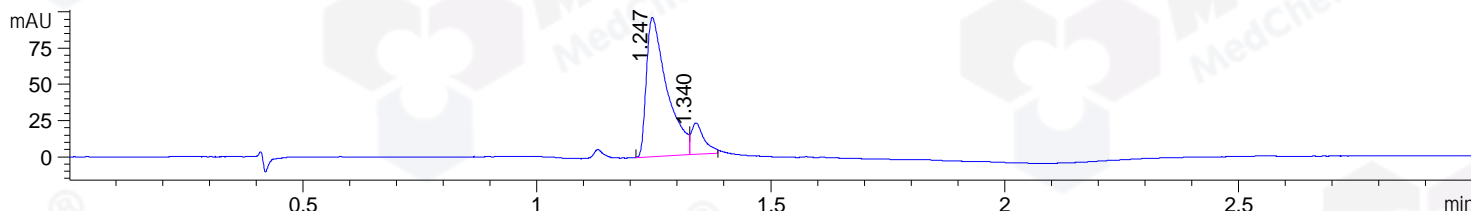
Column :SunFire C18, 4.6*50mm,3.5um A-RP-314

Oven Temperature : 45C

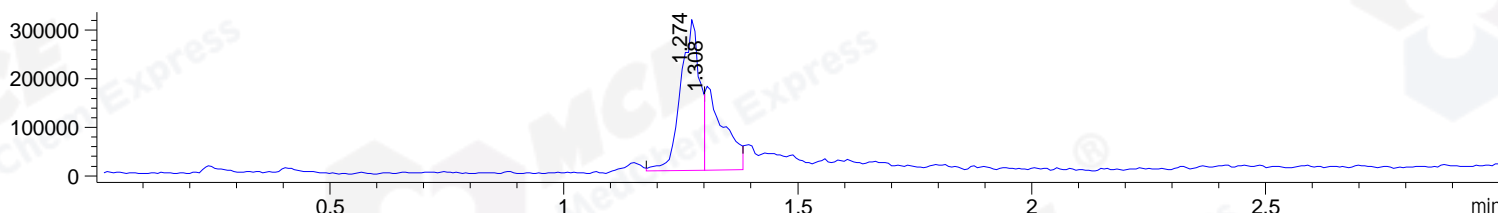
DAD1 B, Sig=214,4 Ref=off



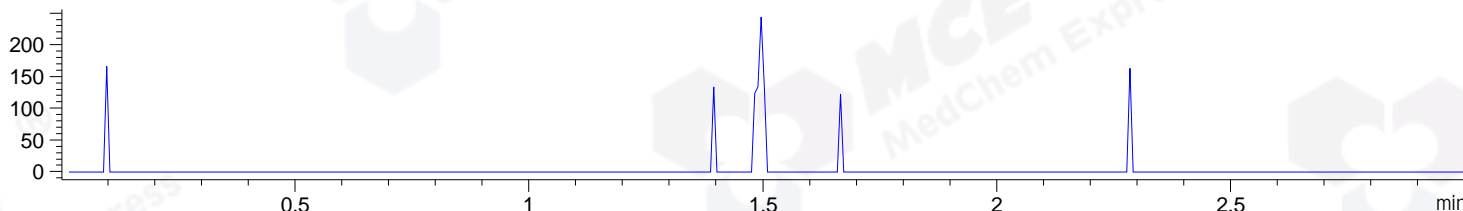
DAD1 C, Sig=254,4 Ref=off



MSD1 TIC, MS File ES-API, Pos, Scan, Frag: 70



Ion 1266.6, MSD1 1266.6, Target Mass 1265.6 +H Positive, EIC=1266.3:1267.3



Integration Results for DAD1 B, Sig=214,4 Ref=off

RetTim	Width	Area	Height	Area%	MS (+)
1.13	0.02	8.85	6.36	0.15	356
1.25	0.05	6065.14	1692.41	99.76	604
1.58	0.02	2.75	2.55	0.05	604
1.64	0.02	2.97	2.59	0.05	604

Integration Results for DAD1 C, Sig=254,4 Ref=off

RetTim	Width	Area	Height	Area%	MS (+)
1.25	0.04	293.64	96.23	87.71	604
1.34	0.03	41.15	21.80	12.29	604

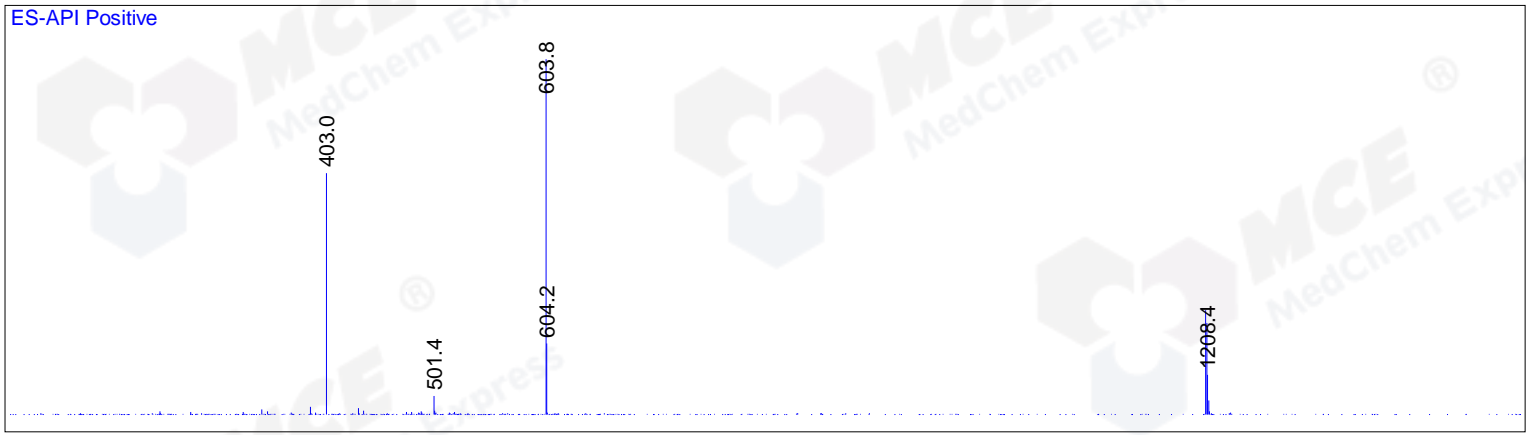
Integration Results for MSD1 TIC, MS File

RetTim	Width	Area	Height	Area%	MS (+)
1.27	0.04	872238.13	313327.19	64.13	604
1.31	0.05	487892.03	172243.80	35.87	604

Ret. Time: 1.27

<<<< POSITIVE SPECTRA >>>>

ES-API Positive



Ret. Time: 1.31

ES-API Positive

