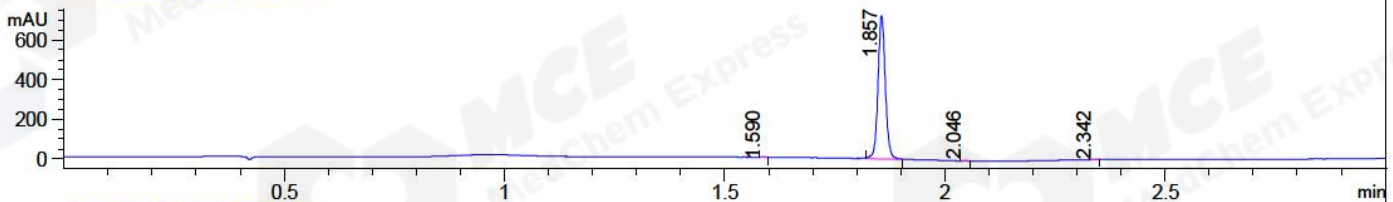
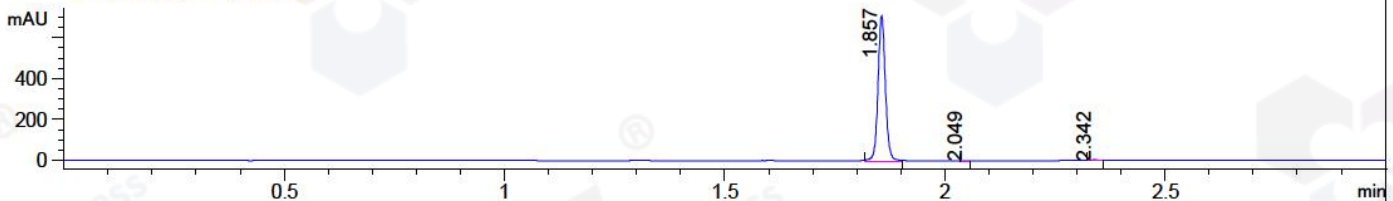


File ..DATA\2018\20181217\536 1\BIZ2018-D17-CXL1.D Tgt Mass (CHM):
Injection Date : 17 Dec 18 4:35 pm +0800 Seq. Line : 13
Sample Name : BIZ2018-D17-CXL1 Location : P2-E-01
Acq. Operator : LQ_1052 Inj : 1
Spec. Reported : MS Integration Inj Volume : 1 ul
Acq. Method : D:\Chem32\1\data\2018\20181217\536 1\1-POS-3MIN-1.M
Analysis Method : D:\CHEM32\1\DATA\2018\20181217\536 1\1-POS-3MIN-1.M
Catalog No : HY-U00461 Batch#35425 A-RP-314
Method Info : Mobile Phase: A: water(0.01%TFA) B:ACN(0.01%TFA)
Gradient: 5% to 95%B within 1.3 min
Flow Rate :1.8ml/min
Column :SunFire C18, 4.6*50mm,3.5um A-RP-314
Oven Temperature : 45□

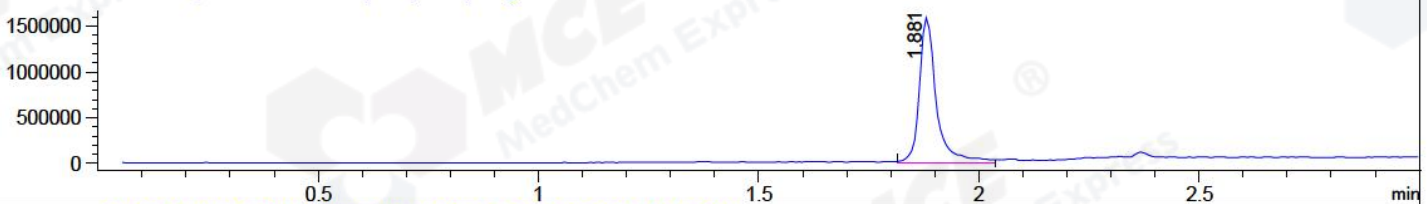
DAD1 B, Sig=214,4 Ref=off



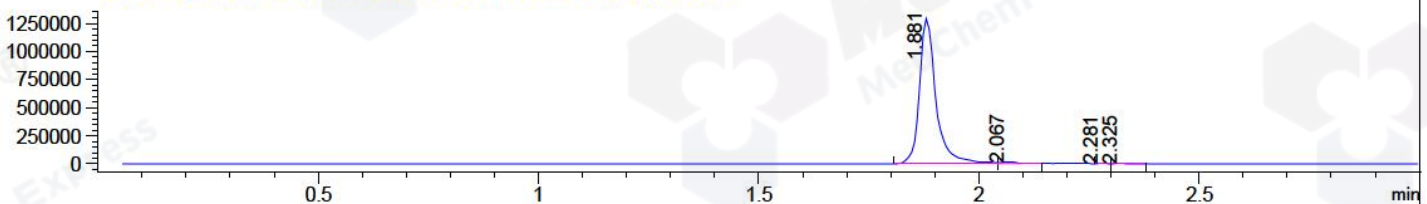
DAD1 C, Sig=254,4 Ref=off



MSD1 TIC, MS File ES-API, Pos, Scan, Frag: 70



Ion 357.2, MSD1 357.2, Target Mass 356.2 +H Positive, EIC=356.9:357.9



Integration Results for DAD1 B, Sig=214,4 Ref=off

RetTim	Width	Area	Height	Area%	MS (+)
1.59	0.01	0.40	0.58	0.05	141
1.86	0.02	838.38	723.78	99.67	357
2.05	0.01	0.82	1.14	0.10	357
2.34	0.01	1.55	1.85	0.18	141

Integration Results for DAD1 C, Sig=254,4 Ref=off

RetTim	Width	Area	Height	Area%	MS (+)
1.86	0.02	818.27	707.64	99.66	357
2.05	0.01	0.37	0.51	0.05	357
2.34	0.02	2.38	2.10	0.29	141

Integration Results for MSD1 TIC, MS File

RetTim	Width	Area	Height	Area%	MS (+)
1.88	0.04	4162069.75	1580228.75	100.00	357

Ret. Time: 1.88

<<<< POSITIVE SPECTRA >>>>

ES-API Positive

