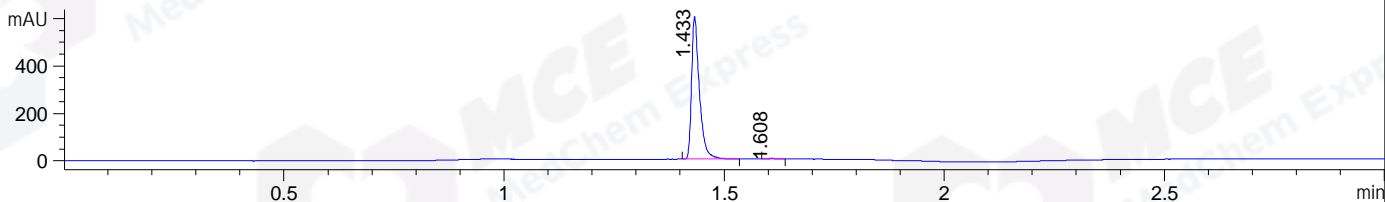
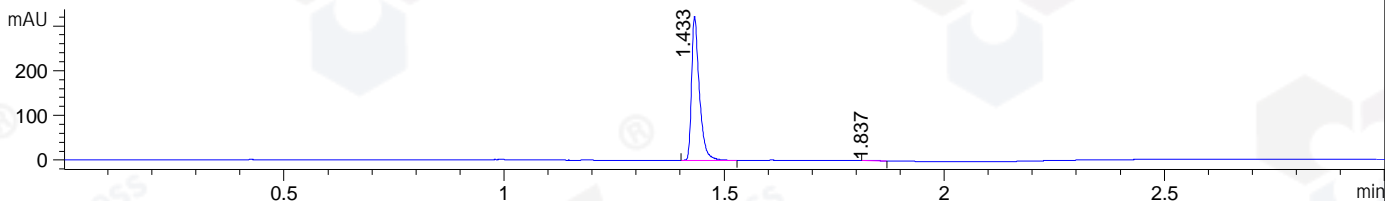


File ..DATA\2019\20190920\713\BIZ2019-909-WMX78-.D Tgt Mass (CHM):  
Injection Date : 20 Sep 19 2:54 pm +0800 Seq. Line : 77  
Sample Name : BIZ2019-909-WMX78 Location : P1-A-04  
Acq. Operator : ZJ\_1432 Inj : 1  
Spec. Reported : MS Integration Inj Volume : 0.3 ul  
Acq. Method : D:\Chem32\1\data\2019\20190920\713\1-POS-3MIN.M  
Analysis Method : D:\CHEM32\1\DATA\2019\20190920\713\1-POS-3MIN.M  
Catalog No : HY-W001174  
Method Info : Mobile Phase: A: water(0.01%TFA) B:ACN(0.01%TFA)  
Gradient: 5% to 95%B within 1.3 min  
Flow Rate :1.8ml/min  
Column :SunFire C18, 4.6\*50mm,3.5um A-RP-433  
Oven Temperature : 45□

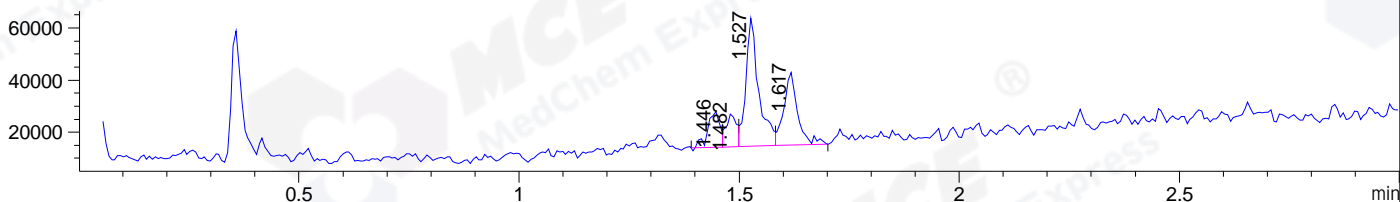
DAD1 B, Sig=214,4 Ref=off



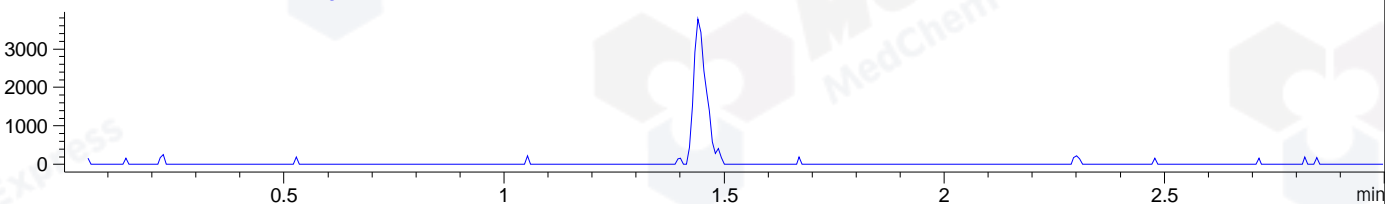
DAD1 C, Sig=254,4 Ref=off



MSD1 TIC, MS File ES-API, Pos, Scan, Frag: 70



Ion 153.05, MSD1 153.05, Target Mass 152.05 +H Positive, EIC=152.75:153.75



Integration Results for DAD1 B, Sig=214,4 Ref=off

| RetTim | Width | Area   | Height | Area% | MS (+) |
|--------|-------|--------|--------|-------|--------|
| 1.43   | 0.02  | 742.69 | 601.89 | 99.56 | 140    |
| 1.61   | 0.02  | 3.27   | 2.57   | 0.44  | 372    |

Integration Results for DAD1 C, Sig=254,4 Ref=off

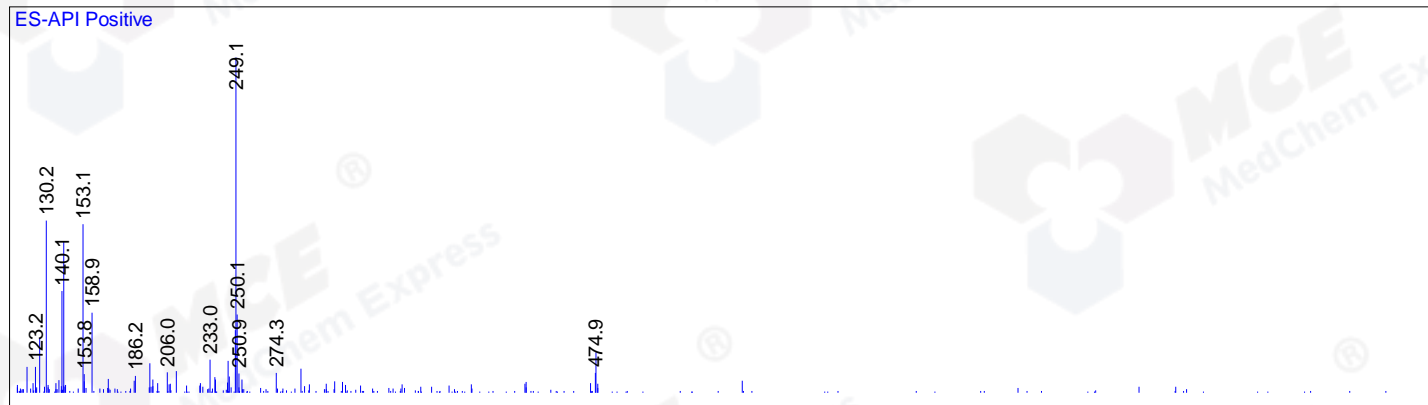
| RetTim | Width | Area   | Height | Area% | MS (+) |
|--------|-------|--------|--------|-------|--------|
| 1.43   | 0.02  | 396.21 | 322.62 | 99.60 | 140    |
| 1.84   | 0.03  | 1.58   | 0.89   | 0.40  | 249    |

Integration Results for MSD1 TIC, MS File

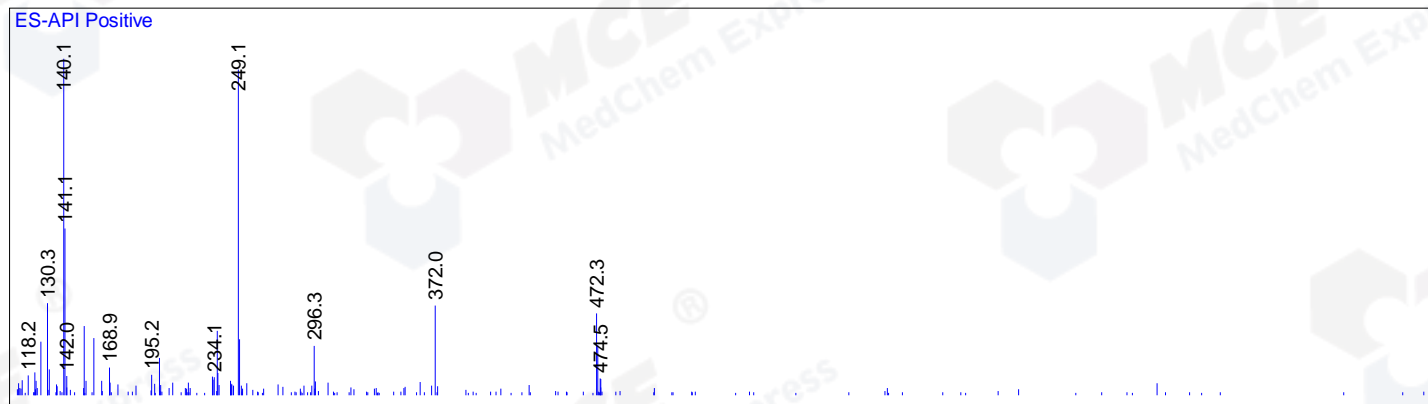
| RetTim | Width | Area     | Height   | Area% | MS (+) |
|--------|-------|----------|----------|-------|--------|
| 1.45   | 0.03  | 25613.28 | 13694.75 | 12.43 | 249    |
| 1.48   | 0.03  | 20095.46 | 12912.41 | 9.75  | 140    |
| 1.53   | 0.03  | 99881.89 | 49286.77 | 48.46 | 140    |
| 1.62   | 0.03  | 60509.95 | 27928.06 | 29.36 | 372    |

Ret. Time: 1.45

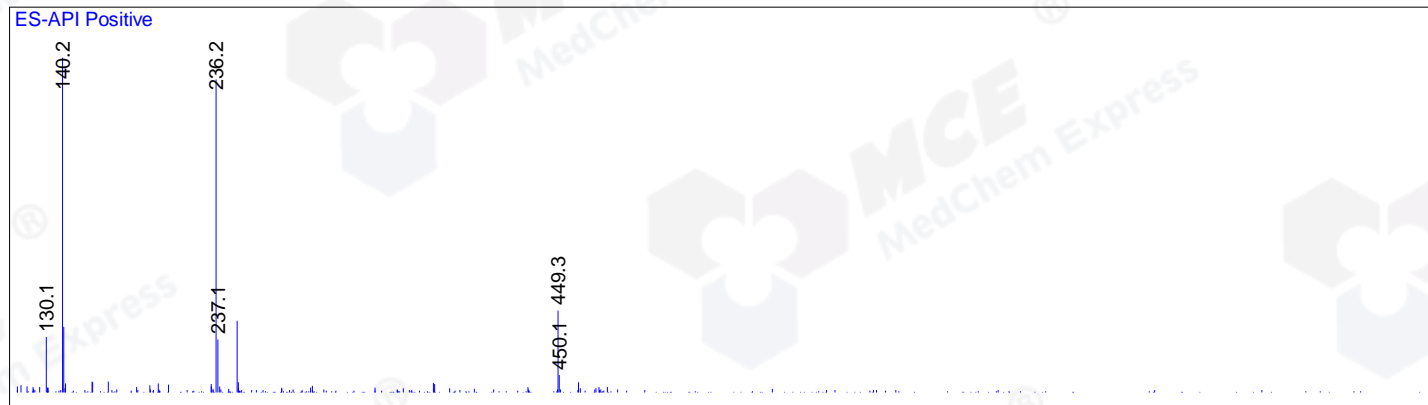
<<<< POSITIVE SPECTRA >>>>



Ret. Time: 1.48



Ret. Time: 1.53



Ret. Time: 1.62

