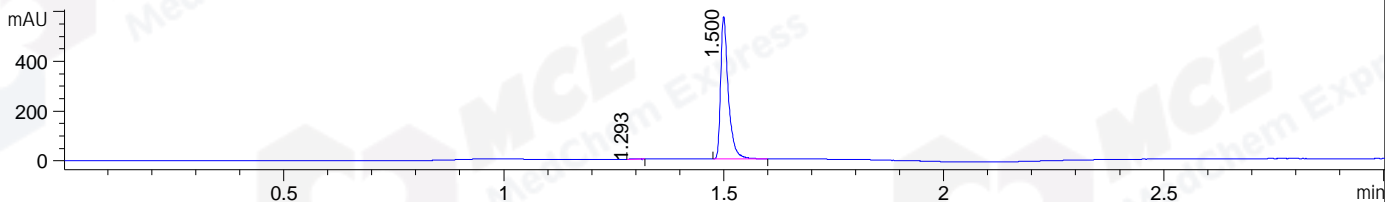
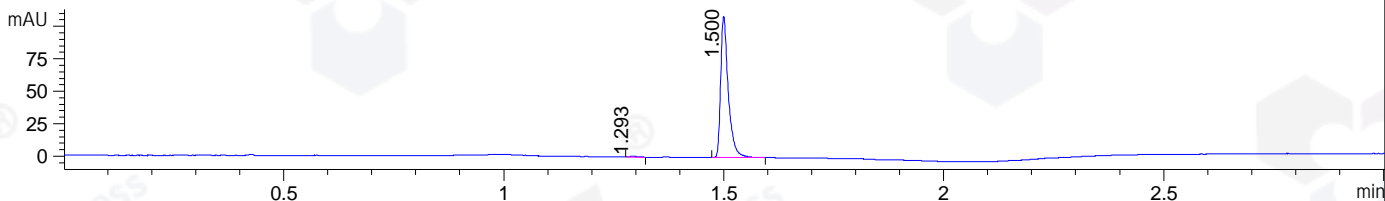


File ..DATA\2019\20190920\713\BIZ2019-909-WMX79-.D Tgt Mass (CHM):
 Injection Date : 20 Sep 19 4:22 pm +0800 Seq. Line : 96
 Sample Name : BIZ2019-909-WMX79 Location : P1-B-07
 Acq. Operator : ZJ_1432 Inj : 1
 Spec. Reported : MS Integration Inj Volume : 0.3 ul
 Acq. Method : D:\Chem32\1\data\2019\20190920\713\1-POS-3MIN.M
 Analysis Method : D:\CHEM32\1\DATA\2019\20190920\713\1-POS-3MIN.M
 Catalog No : HY-W002116 Batch#46028
 Method Info : Mobile Phase: A: water(0.01%TFA) B:ACN(0.01%TFA)
 Gradient: 5% to 95%B within 1.3 min
 Flow Rate :1.8ml/min
 Column :SunFire C18, 4.6*50mm,3.5um A-RP-433
 Oven Temperature : 45

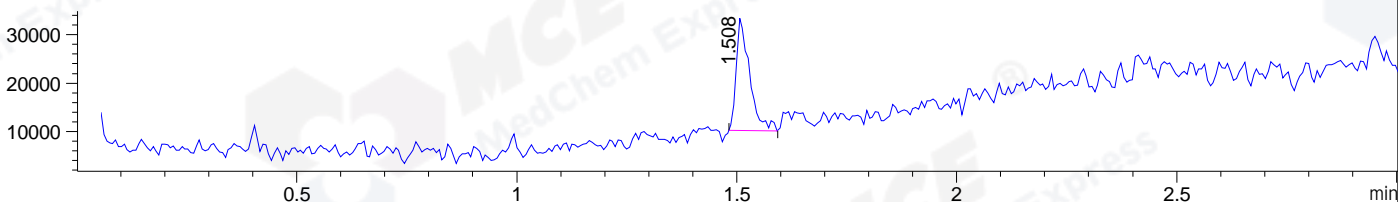
DAD1 B, Sig=214,4 Ref=off



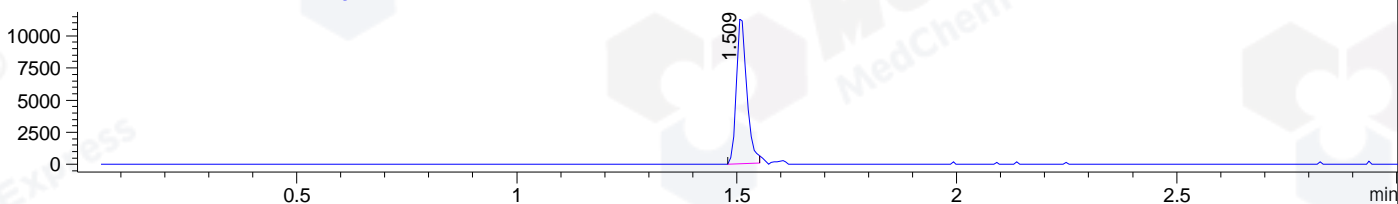
DAD1 C, Sig=254,4 Ref=off



MSD1 TIC, MS File ES-API, Pos, Scan, Frag: 70



Ion 213.07, MSD1 213.07, Target Mass 212.07 +H Positive, EIC=212.77:213.77



Integration Results for DAD1 B, Sig=214,4 Ref=off

RetTim	Width	Area	Height	Area%	MS (+)
1.29	0.02	1.65	1.73	0.24	ND
1.50	0.02	688.13	571.98	99.76	213

Integration Results for DAD1 C, Sig=254,4 Ref=off

RetTim	Width	Area	Height	Area%	MS (+)
1.29	0.02	0.85	0.82	0.64	130
1.50	0.02	130.88	108.88	99.36	213

Integration Results for MSD1 TIC, MS File

RetTim	Width	Area	Height	Area%	MS (+)
1.51	0.03	49676.43	23715.39	100.00	213

Ret. Time: 1.51

<<<< POSITIVE SPECTRA >>>>

