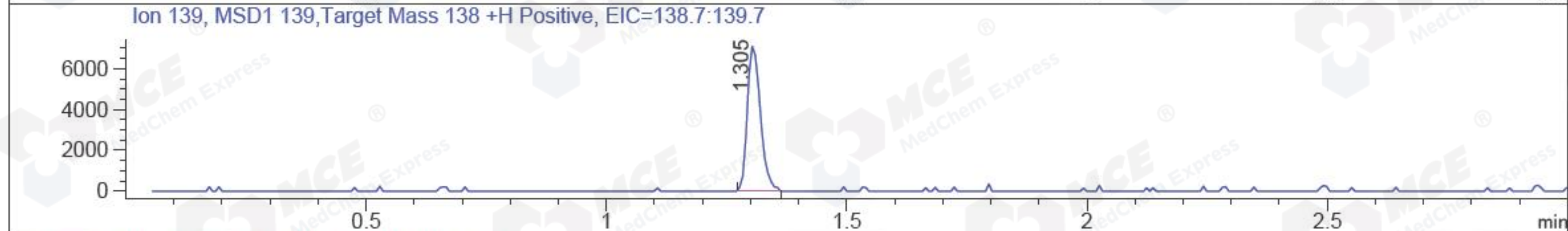
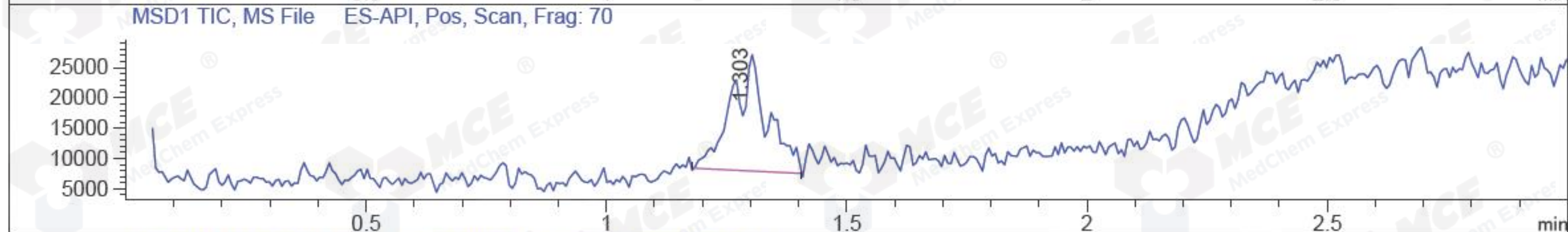
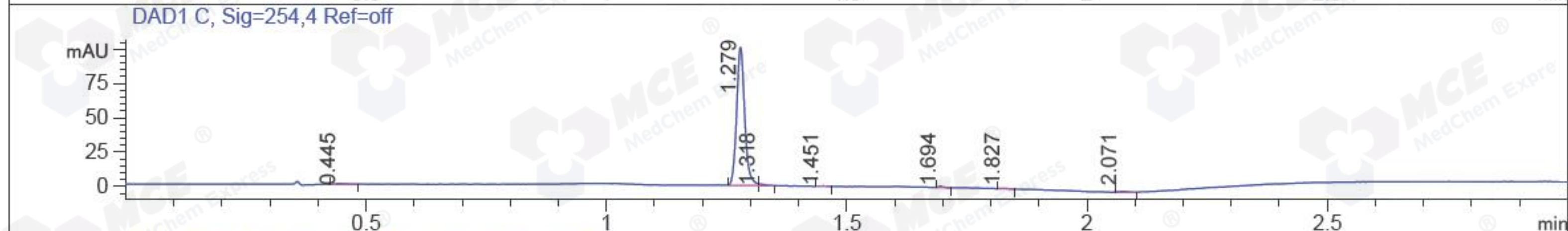
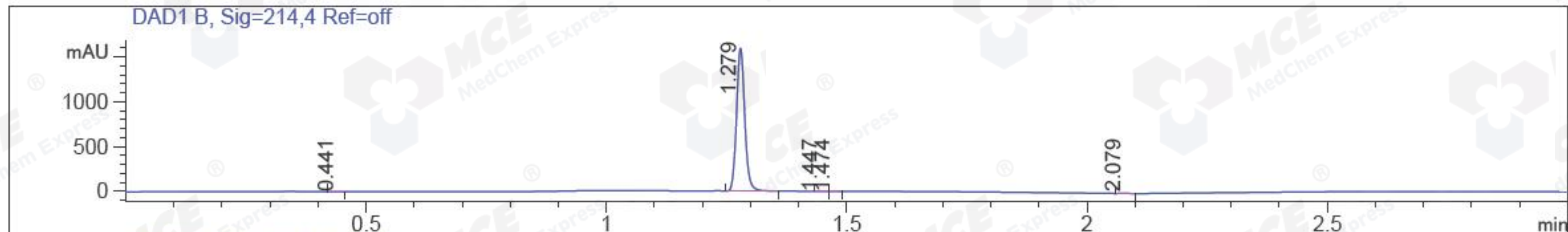


File ..6 2017-06-26 16-02-10\BIZ2017-626-WYQ12_1.D Tgt Mass (CHM) :
 Injection Date : 26 Jun 17 6:00 pm +0800 Seq. Line : 27
 Sample Name : BIZ2017-626-WYQ12_1 Location : P1-E-01
 Acq. Operator : CLJ_701 Inj : 1
 Spec. Reported : MS Integration Inj Volume : 0.5 ul
 Acq. Method : D:\chem32\1\DATA\20170626\20170626 2017-06-26 16-02-10\1-POS-3MIN.M
 Analysis Method : D:\CHEM32\1\DATA\20170626\20170626 2017-06-26 16-02-10\1-POS-3MIN.M
 Catalog No : HY-W004049 Batch#25067 A-RP-186
 Method Info : Mobile Phase: A: water(0.01%TFA) B:ACN(0.01%TFA)
 Gradient: 5% to 95%B within 1.3 min
 Flow Rate :1.8ml/min
 Column :SunFire C18, 4.6*50mm,3.5um A-RP-186
 Oven Temperature : 45C



Integration Results for DAD1 B, Sig=214,4 Ref=off

RetTim	Width	Area	Height	Area%	MS (+)
0.44	0.02	0.99	0.84	0.05	ND
1.28	0.02	1893.50	1591.92	99.82	254
1.45	0.02	0.94	0.86	0.05	163
1.47	0.02	0.54	0.50	0.03	ND
2.08	0.02	0.97	0.88	0.05	233

Integration Results for DAD1 C, Sig=254,4 Ref=off

RetTim	Width	Area	Height	Area%	MS (+)
0.45	0.29	0.92	0.68	0.76	163
1.28	0.02	117.22	100.48	96.80	254
1.32	0.02	0.88	1.12	0.73	139
1.45	0.02	0.30	0.28	0.25	163
1.69	0.02	0.47	0.90	0.38	ND
1.83	0.02	0.37	0.32	0.31	233
2.07	0.04	0.93	0.60	0.77	233

Integration Results for MSD1 TIC, MS File

RetTim	Width	Area	Height	Area%	MS(+)
1.30	0.09	99849.81	19411.89	100.00	254

Ret. Time: 1.30

<<<< POSITIVE SPECTRA >>>>

