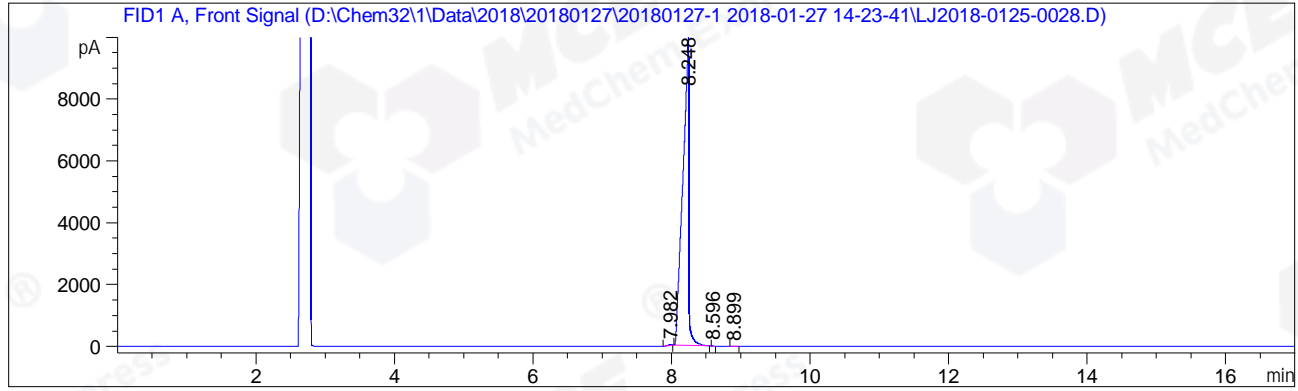


```
=====
Acq. Operator   : LSL_985                      Seq. Line : 13
Acq. Instrument : GC7890                      Location  : 22 (F)
Injection Date  : 1/27/2018 7:48:12 PM        Inj       : 1
                                                Inj Volume: 1 µl
Acq. Method     : D:\Chem32\1\Data\2018\20180127\20180127-1 2018-01-27 14-23-41\GC-FQ.M
Last changed    : 1/27/2018 2:23:41 PM by LSL_985
Analysis Method : D:\Chem32\1\Data\2018\20180127\20180127-1 2018-01-27 14-23-41\GC-FQ.M (
                  Sequence Method)
Last changed    : 1/29/2018 9:32:13 AM by LSL_985
                                                    (modified after loading)
=====
```

Additional Info : Peak(s) manually integrated



=====  
Area Percent Report  
=====

Sorted By : Signal  
Multiplier : 1.0000  
Dilution : 1.0000  
Do not use Multiplier & Dilution Factor with ISTDs

Signal 1: FID1 A, Front Signal

Peak #	RetTime [min]	Type	Width [min]	Area [pA*s]	Height [pA]	Area %
1	7.982	MM	0.0514	93.17948	30.20688	0.15407
2	8.248	MM	0.1007	6.03712e4	9994.90527	99.82189
3	8.596	MM	0.0206	11.14340	8.99985	0.01843
4	8.899	BB	0.0235	3.39451	2.12219	0.00561
Totals :				6.04789e4	1.00362e4	

=====  
\*\*\* End of Report \*\*\*  
=====