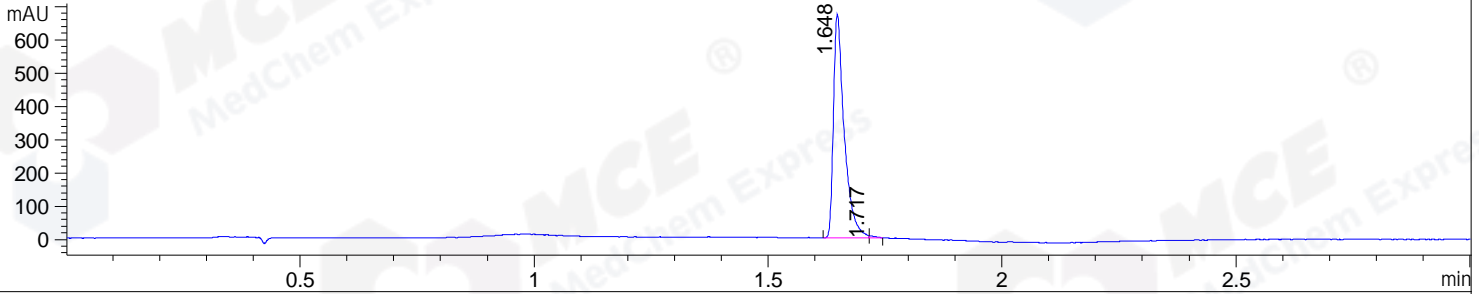
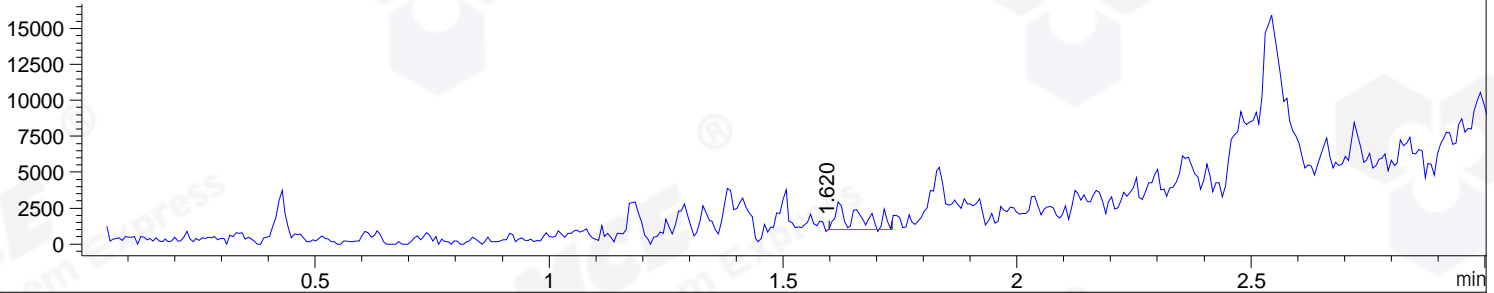


File ..\DATA\2019\20191225\796\BIZ2019-D24-CXL2.D Tgt Mass (CHM):  
 Injection Date : 25 Dec 19 11:17 pm +0800 Seq. Line : 59  
 Sample Name : BIZ2019-D24-CXL2 Location : P1-C-07  
 Acq. Operator : ZJ\_1432 Inj : 1  
 Spec. Reported : MS Integration Inj Volume : 1 ul  
 Acq. Method : D:\Chem32\1\data\2019\20191225\796\1-POS-3MIN.M  
 Analysis Method : D:\CHEM32\1\DATA\2019\20191225\796\1-POS-3MIN.M  
 Catalog No : HY-100527 Batch#58167  
 Method Info : Mobile Phase: A: water(0.01%TFA) B:ACN(0.01%TFA)  
 Gradient: 5% to 95%B within 1.3 min  
 Flow Rate :1.8ml/min  
 Column :SunFire C18, 4.6\*50mm,3.5um A-RP-433  
 Oven Temperature : 45□

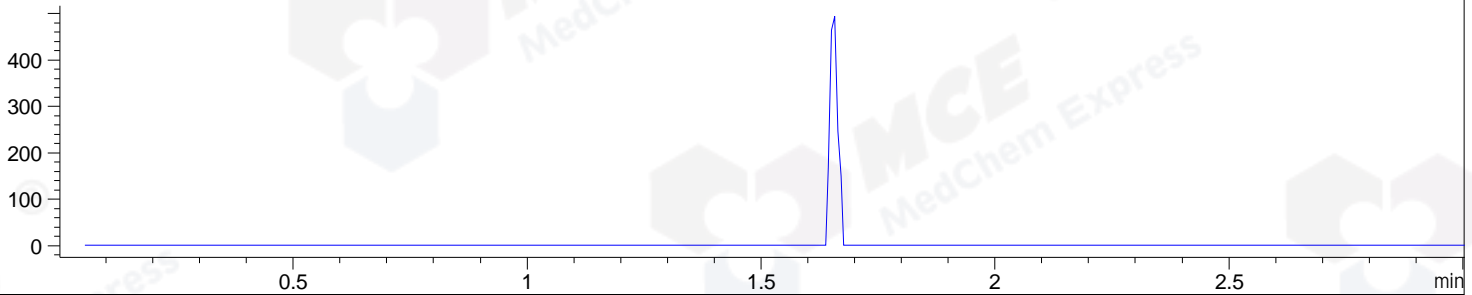
DAD1 B, Sig=214,4 Ref=off



MSD1 TIC, MS File ES-API, Pos, Scan, Frag: 70



Ion 169, MSD1 169, Target Mass 168 +H Positive, EIC=168.7:169.7



Integration Results for DAD1 B, Sig=214,4 Ref=off

RetTim	Width	Area	Height	Area%	MS (+)
1.65	0.03	1074.23	670.92	99.55	ND
1.72	0.01	4.85	5.76	0.45	ND

Integration Results for MSD1 TIC, MS File

RetTim	Width	Area	Height	Area%	MS (+)
1.62	0.05	6219.51	2052.96	100.00	ND