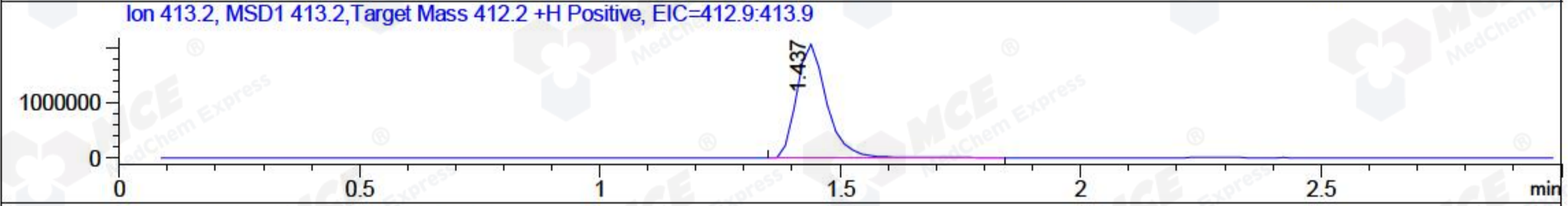
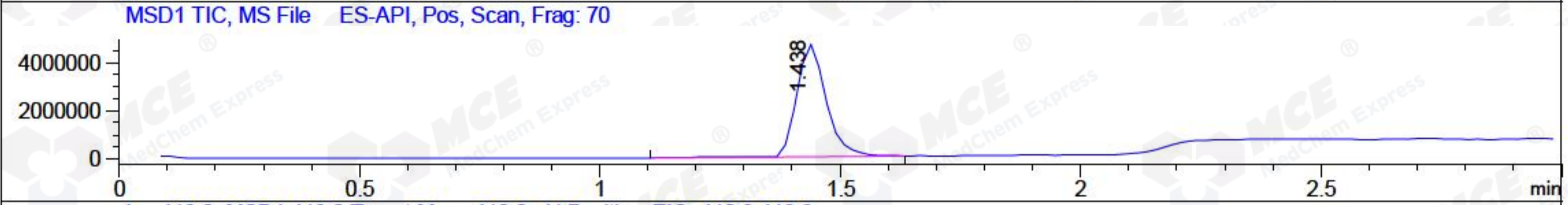
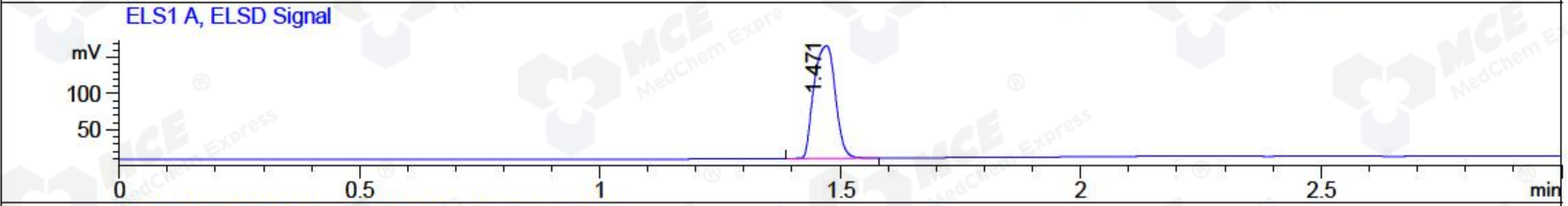
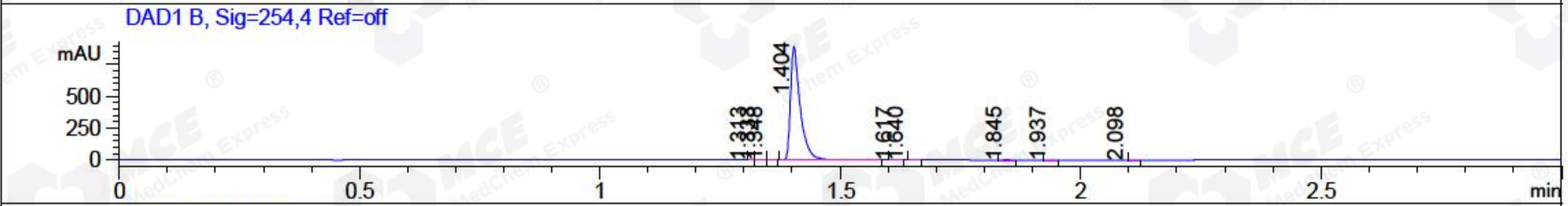
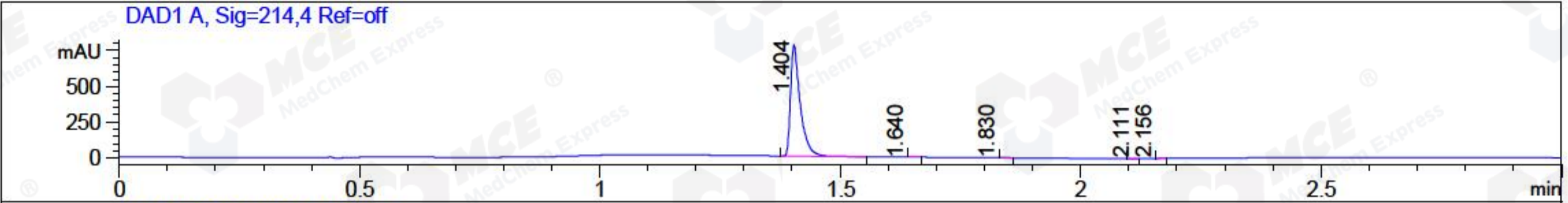


File ..ata\20171102\20171102-1\BIZ2017-N02-WYQ11.D Tgt Mass (CHM):
 Injection Date : 2 Nov 17 2:11 pm +0800 Seq. Line : 26
 Sample Name : BIZ2017-N02-WYQ11 Location : P1-E-06
 Acq. Operator : SYSTEM Inj : 1
 Spec. Reported : MS Integration Inj Volume : 1 ul
 Acq. Method : D:\LCMS03\Data\20171102\20171102-1\1-POS-3MIN.M
 Analysis Method : D:\LCMS03\Data\20171102\20171102-1\1-POS-3MIN.M
 Catalog No : HY-100740 Batch#27024
 Method Info : Mobile Phase: A: water(0.01%TFA) B:ACN(0.01%TFA)
 Gradient: 5% to 95%B within 1.3 min
 Flow Rate :1.8ml/min
 Column :SunFire C18, 4.6*50mm,3.5um A-RP-186
 Oven Temperature : 45C



Integration Results for DAD1 A, Sig=214,4 Ref=off

RetTim	Width	Area	Height	Area%	MS (+)
1.40	0.02	1084.93	772.82	99.76	413
1.64	0.02	0.82	0.19	0.08	233
1.83	0.02	1.17	0.10	0.11	233
2.11	0.01	0.28	0.39	0.03	105
2.16	0.02	0.34	0.23	0.03	105

Integration Results for DAD1 B, Sig=254,4 Ref=off

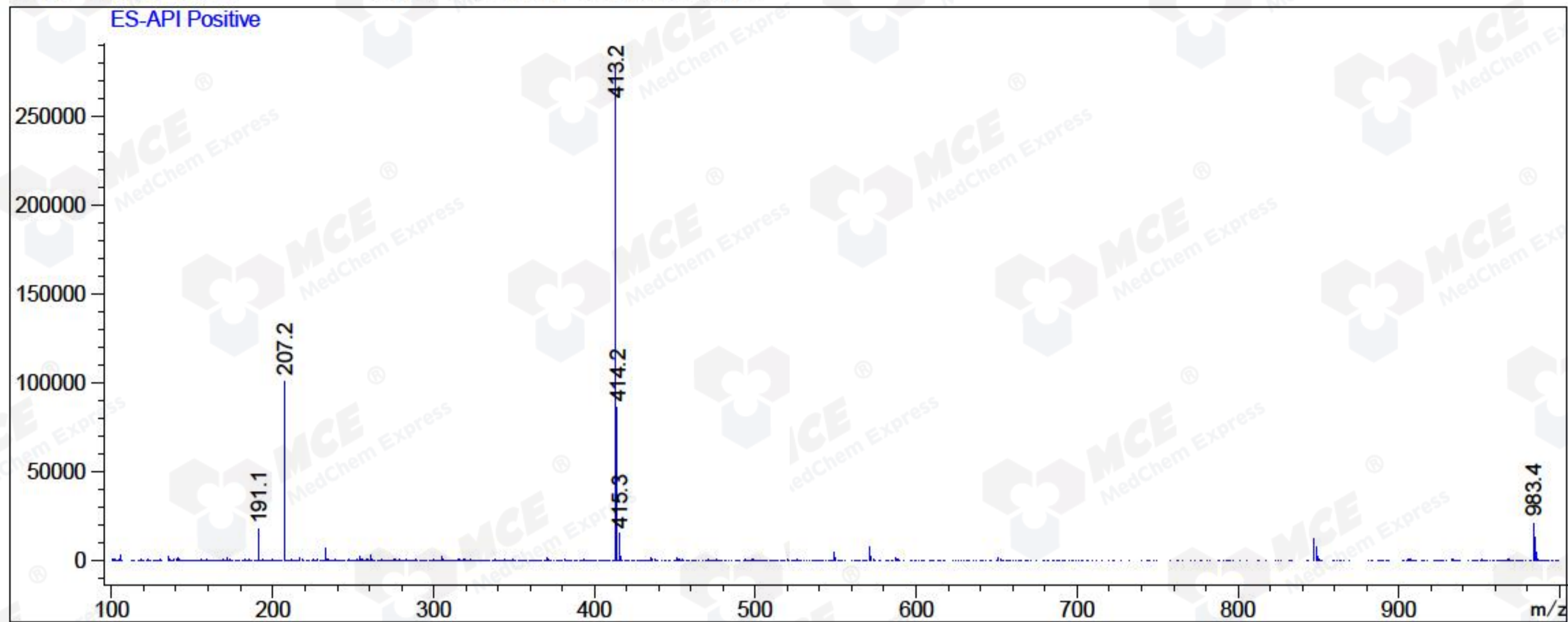
RetTim	Width	Area	Height	Area%	MS (+)
1.31	0.01	0.22	0.35	0.02	233
1.33	0.02	1.32	1.26	0.11	233
1.35	0.01	0.46	0.27	0.04	233
1.40	0.02	1242.04	886.83	99.65	413
1.62	0.02	0.31	0.33	0.03	233
1.64	0.01	0.55	-0.01	0.04	233
1.85	0.02	0.89	0.93	0.07	233
1.94	0.02	0.28	0.30	0.02	233
2.10	0.01	0.27	-0.00	0.02	105

Integration Results for MSD1 TIC, MS File

RetTim	Width	Area	Height	Area%	MS (+)
1.44	0.07	19877674.00	4664656.00	100.00	413

Ret. Time: 1.44

<<<< POSITIVE SPECTRA >>>>



*** End of Report ***