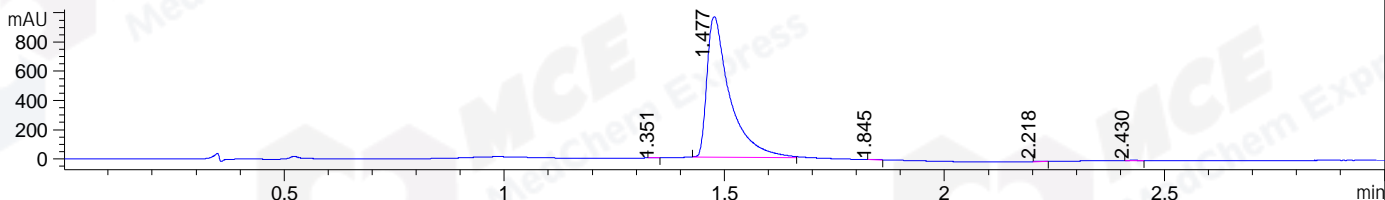
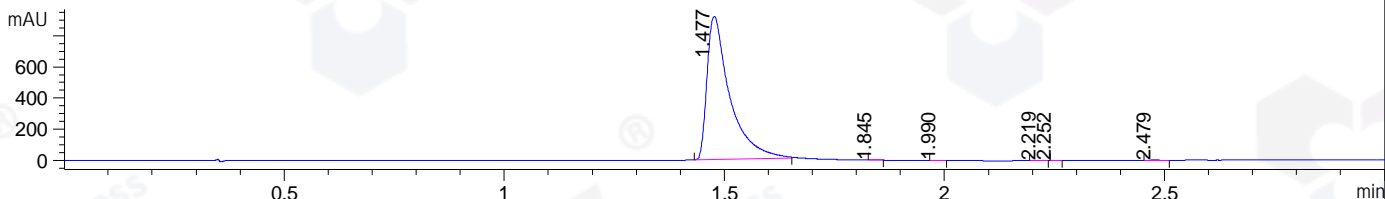


File ..DATA\2019\20190320\558\BIZ2019-319-WYQ5.D Tgt Mass (CHM):
 Injection Date : 20 Mar 19 11:31 am +0800 Seq. Line : 26
 Sample Name : BIZ2019-319-WYQ5 Location : P2-C-08
 Acq. Operator : LQ_1052 Inj : 1
 Spec. Reported : MS Integration Inj Volume : 4 ul
 Acq. Method : D:\Chem32\1\data\2019\20190320\558\1-POS-3MIN-1.M
 Analysis Method : D:\CHEM32\1\DATA\2019\20190320\558\1-POS-3MIN-1.M
 Catalog No : HY-103269 Batch#39164 BY MEOH
 Method Info : Mobile Phase: A: water(0.01%TFA) B:ACN(0.01%TFA)
 Gradient: 5% to 95%B within 1.3 min
 Flow Rate :1.8ml/min
 Column :SunFire C18, 4.6*50mm,3.5um A-RP-314
 Oven Temperature : 45

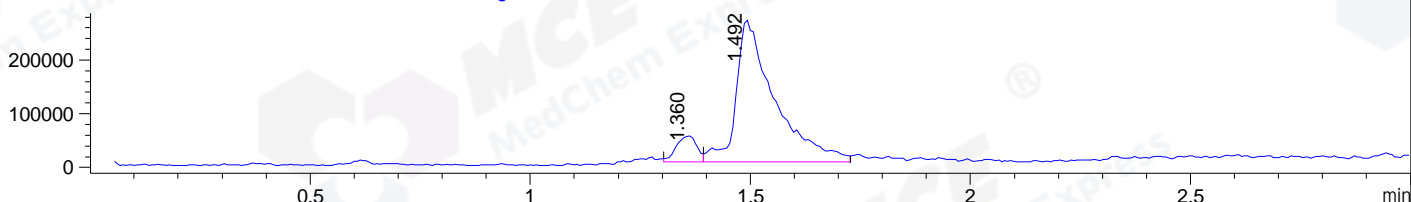
DAD1 B, Sig=214,4 Ref=off



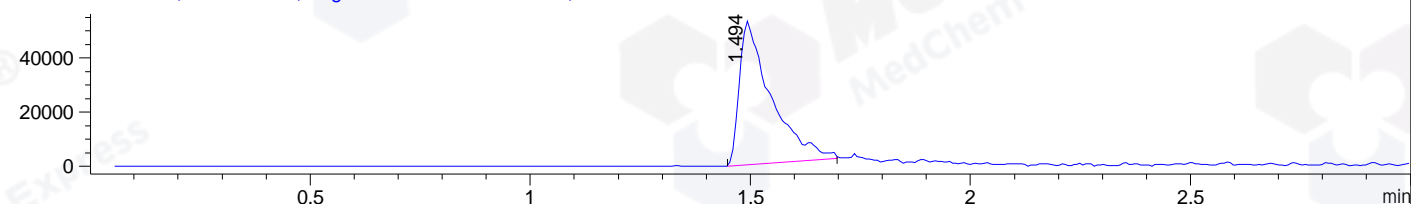
DAD1 C, Sig=254,4 Ref=off



MSD1 TIC, MS File ES-API, Pos, Scan, Frag: 70



Ion 466.1, MSD1 466.1, Target Mass 465.1 +H Positive, EIC=465.8:466.8



Integration Results for DAD1 B, Sig=214,4 Ref=off

RetTim	Width	Area	Height	Area%	MS (+)
1.35	0.04	1.23	0.56	0.04	701
1.48	0.05	3471.48	963.12	99.72	468
1.84	0.02	2.04	1.68	0.06	468
2.22	0.02	3.03	2.70	0.09	142
2.43	0.02	3.60	2.72	0.10	142

Integration Results for DAD1 C, Sig=254,4 Ref=off

RetTim	Width	Area	Height	Area%	MS (+)
1.48	0.05	3311.59	918.90	99.83	468
1.85	0.02	1.31	1.12	0.04	468
1.99	0.02	0.71	0.54	0.02	468
2.22	0.02	2.27	2.25	0.07	142
2.25	0.02	0.63	0.63	0.02	142
2.48	0.03	0.64	0.35	0.02	142

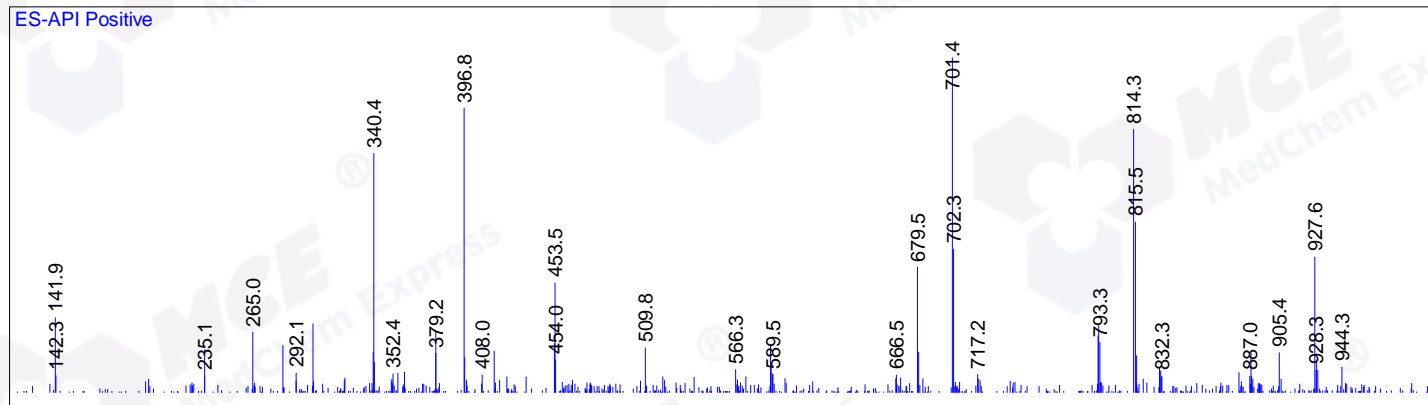
Integration Results for MSD1 TIC, MS File

1.36	0.05	158121.83	48563.72	8.96	701
1.49	0.08	1606613.50	264609.81	91.04	468

RetTim	Width	Area	Height	Area%	MS (+)
--------	-------	------	--------	-------	--------

Ret. Time: 1.36

<<<< POSITIVE SPECTRA >>>>



Ret. Time: 1.49

