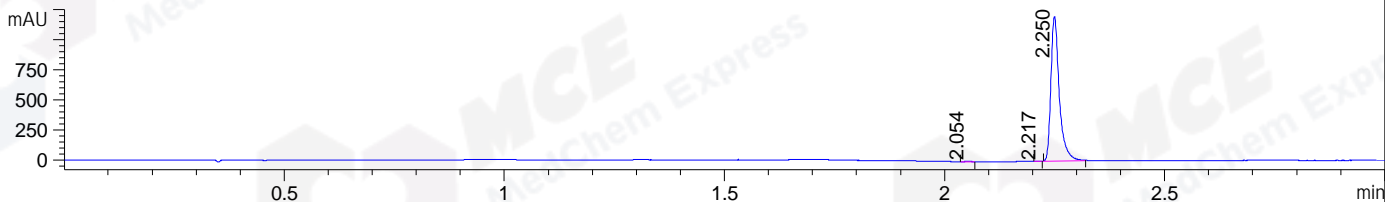
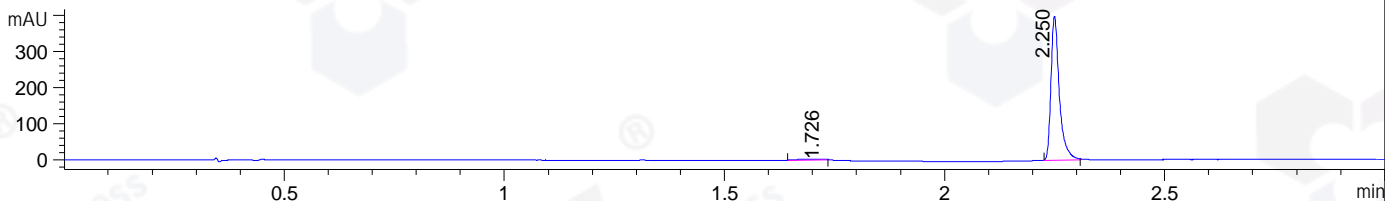


File ..1\DATA\2019\20190531\577\BIZ2019-530-CXL6.D Tgt Mass (CHM):
 Injection Date : 31 May 19 12:06 pm +0800 Seq. Line : 27
 Sample Name : BIZ2019-530-CXL6 Location : P1-F-05
 Acq. Operator : LQ_1052 Inj : 1
 Spec. Reported : MS Integration Inj Volume : 1 ul
 Acq. Method : D:\Chem32\1\data\2019\20190531\577\1-POS-3MIN.M
 Analysis Method : D:\CHEM32\1\DATA\2019\20190531\577\1-POS-3MIN.M
 Catalog No : HY-103371 Batch#41913
 Method Info : Mobile Phase: A: water(0.01%TFA) B:ACN(0.01%TFA)
 Gradient: 5% to 95%B within 1.3 min
 Flow Rate :1.8ml/min
 Column :SunFire C18, 4.6*50mm,3.5um A-RP-433
 Oven Temperature : 45□

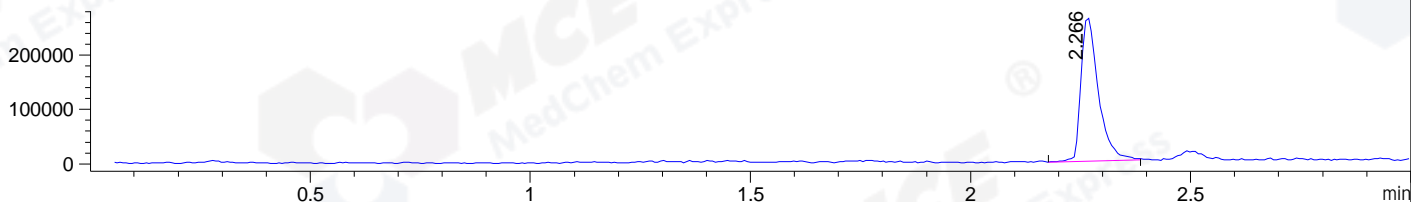
DAD1 B, Sig=214,4 Ref=off



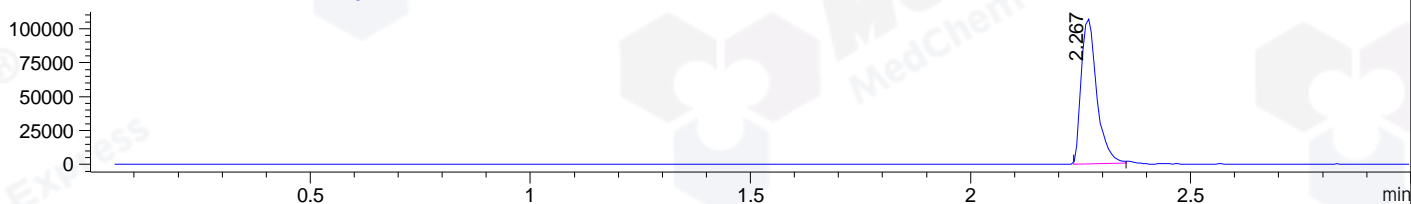
DAD1 C, Sig=254,4 Ref=off



MSD1 TIC, MS File ES-API, Pos, Scan, Frag: 70



Ion 427.14, MSD1 427.14, Target Mass 426.14 +H Positive, EIC=426.84:427.84



Integration Results for DAD1 B, Sig=214,4 Ref=off

RetTim	Width	Area	Height	Area%	MS (+)
2.05	0.01	2.07	2.82	0.13	ND
2.22	0.02	0.93	0.89	0.06	ND
2.25	0.02	1592.30	1201.30	99.81	427

Integration Results for DAD1 C, Sig=254,4 Ref=off

RetTim	Width	Area	Height	Area%	MS (+)
1.73	0.10	8.32	1.38	1.55	ND
2.25	0.02	527.07	399.06	98.45	427

Integration Results for MSD1 TIC, MS File

RetTim	Width	Area	Height	Area%	MS (+)
2.27	0.04	726593.56	264116.09	100.00	427

Ret. Time: 2.27

<<<< POSITIVE SPECTRA >>>>

ES-API Positive

