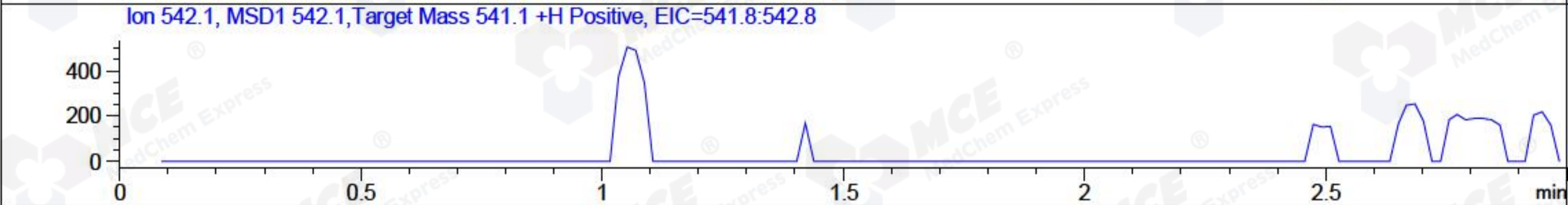
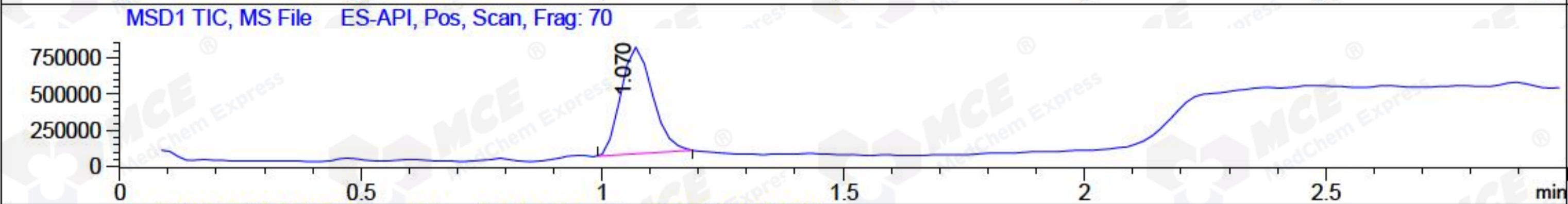
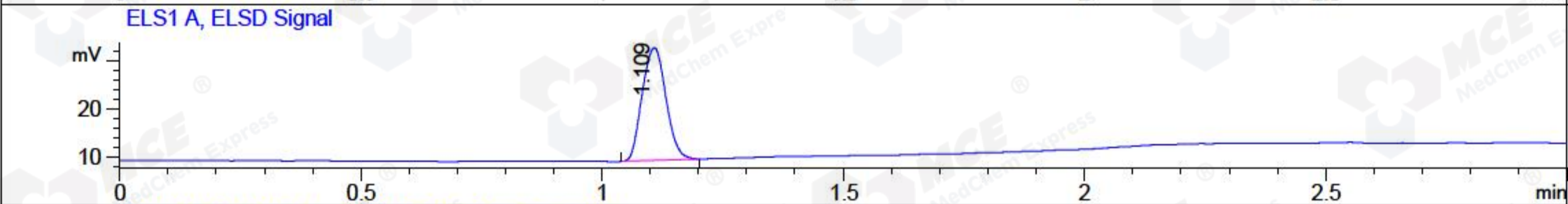
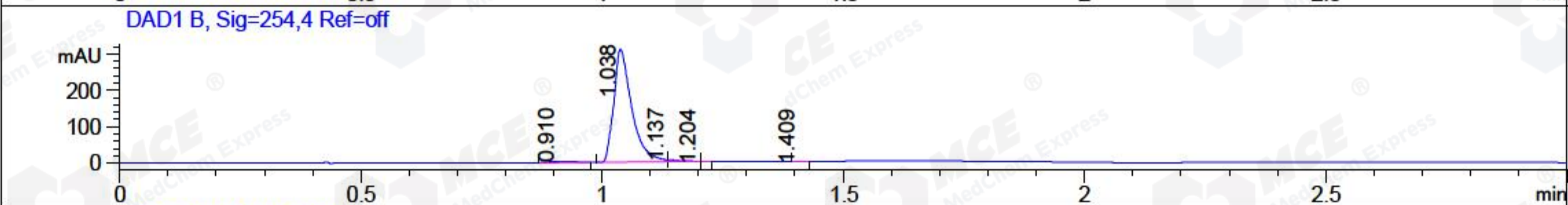
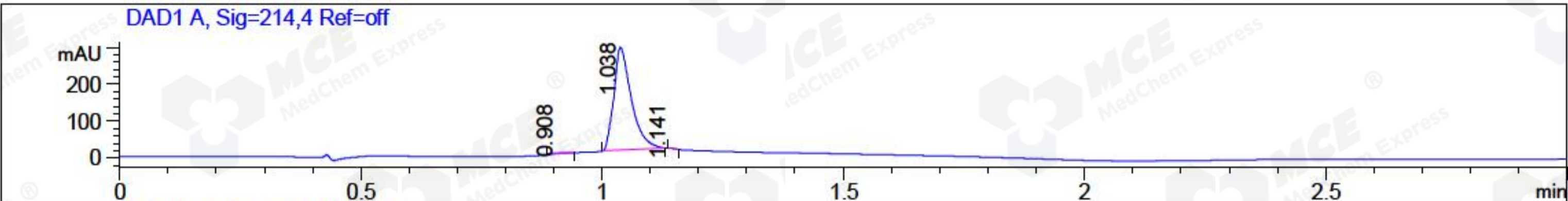


File ..\Data\20180112\20180112-1\BIZ2018-112-XT1.D Tgt Mass (CHM):
 Injection Date : 12 Jan 18 4:47 pm +0800 Seq. Line : 28
 Sample Name : BIZ2018-112-XT1 Location : P2-B-06
 Acq. Operator : SYSTEM Inj : 1
 Spec. Reported : MS Integration Inj Volume : 1 ul
 Acq. Method : D:\LCMS03\Data\20180112\20180112-1\1-POS-3MIN.M
 Analysis Method : D:\LCMS03\Data\20180112\20180112-1\1-POS-3MIN.M
 Catalog No : HY-103697A Batch#28242
 Method Info : Mobile Phase: A: water(0.01%TFA) B:ACN(0.01%TFA)
 Gradient: 5% to 95%B within 1.3 min
 Flow Rate :1.8ml/min
 Column :SunFire C18, 4.6*50mm,3.5um A-RP-186
 Oven Temperature : 45C



Integration Results for DAD1 A, Sig=214,4 Ref=off

RetTim	Width	Area	Height	Area%	MS (+)
0.91	0.03	3.99	1.91	0.56	299
1.04	0.04	705.20	278.66	99.28	314
1.14	0.02	1.13	0.93	0.16	314

Integration Results for DAD1 B, Sig=254,4 Ref=off

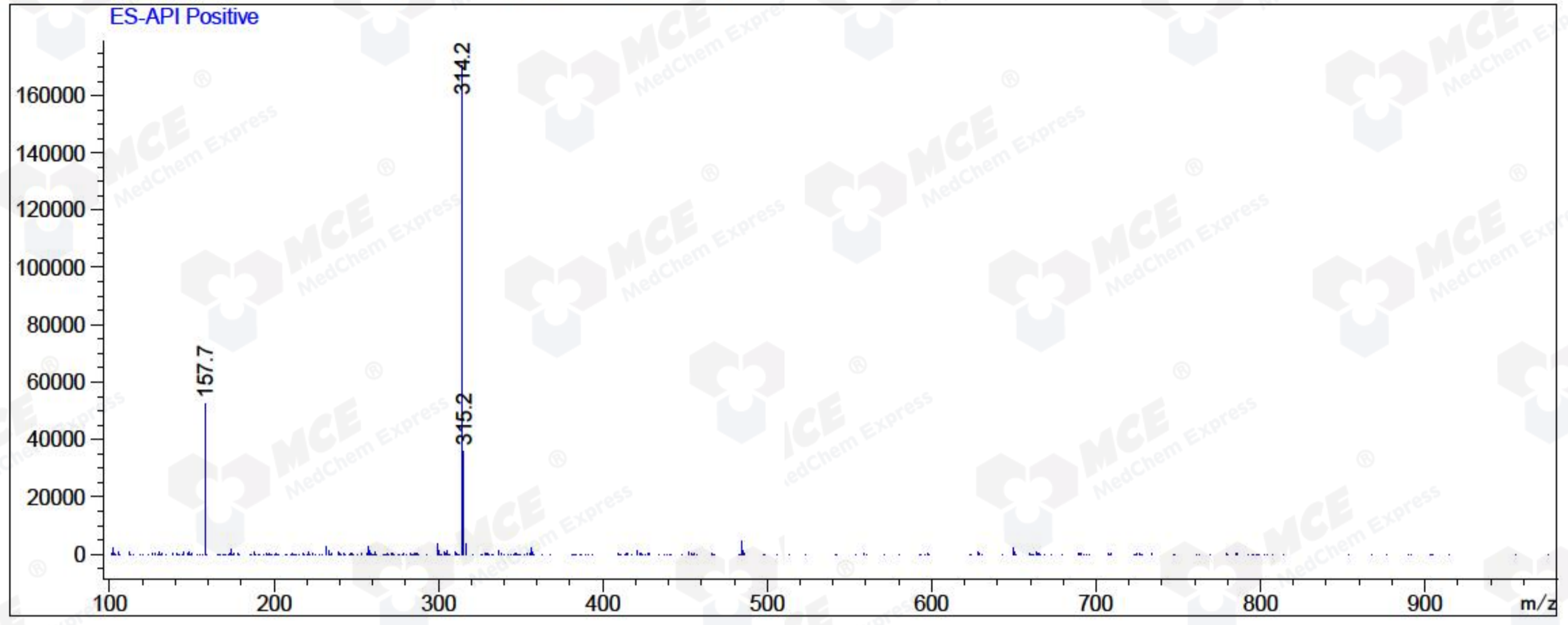
RetTim	Width	Area	Height	Area%	MS (+)
0.91	0.06	11.38	3.27	1.37	299
1.04	0.04	805.99	310.23	97.37	314
1.14	0.03	9.66	5.80	1.17	314
1.20	0.01	0.21	0.24	0.03	314
1.41	0.02	0.48	0.33	0.06	314

Integration Results for MSD1 TIC, MS File

RetTim	Width	Area	Height	Area%	MS (+)
1.07	0.07	3344463.50	744439.13	100.00	314

Ret. Time: 1.07

<<<< POSITIVE SPECTRA >>>>



*** End of Report ***