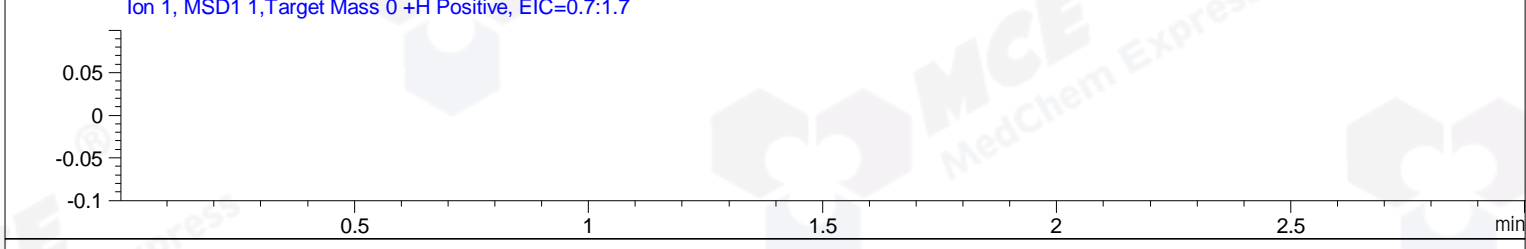
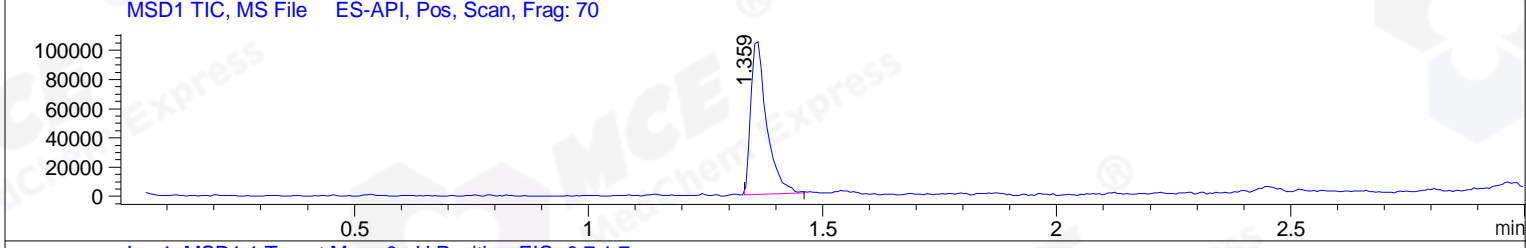
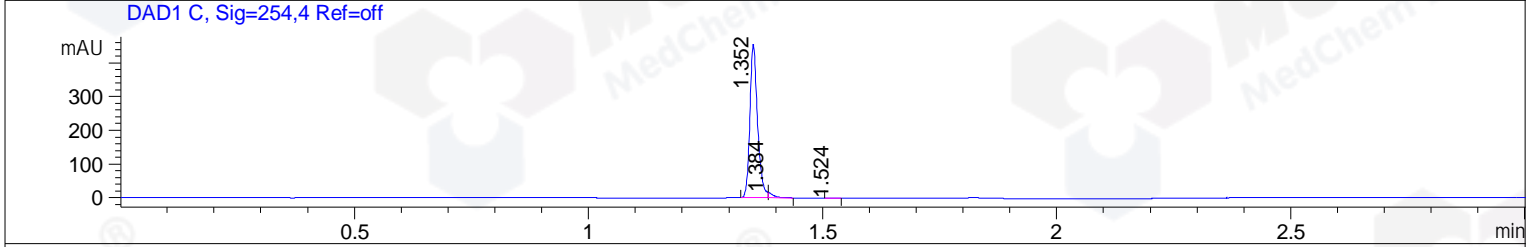
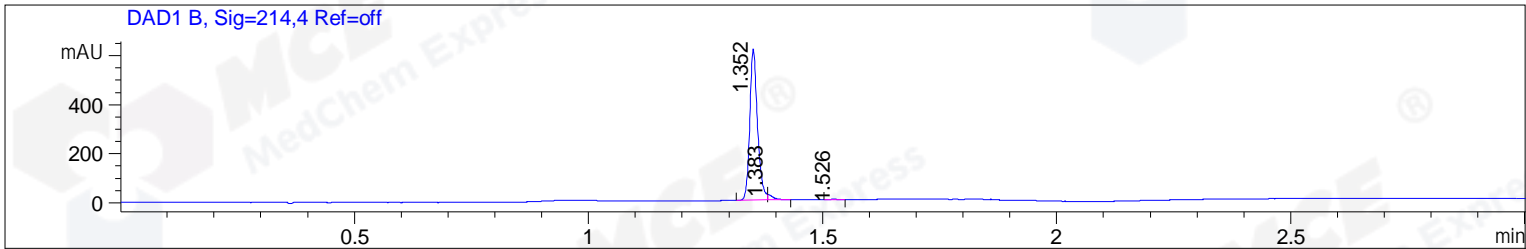


File ..ATA\2019\20191030\747\CPK2019-029-24109--.D Tgt Mass (CHM):
 Injection Date : 30 Oct 19 3:10 pm +0800 Seq. Line : 82
 Sample Name : CPK2019-029-24109 Location : P1-D-03
 Acq. Operator : ZJ_1432 Inj : 1
 Spec. Reported : MS Integration Inj Volume : 0.5 ul
 Acq. Method : D:\Chem32\1\data\2019\20191030\747\1-POS-3MIN.M
 Analysis Method : D:\CHEM32\1\DATA\2019\20191030\747\1-POS-3MIN.M
 Catalog No : HY-10550 Batch# 24109
 Method Info : Mobile Phase: A: water(0.01%TFA) B:ACN(0.01%TFA)
 Gradient: 5% to 95%B within 1.3 min
 Flow Rate :1.8ml/min
 Column :SunFire C18, 4.6*50mm,3.5um A-RP-433
 Oven Temperature : 45



Integration Results for DAD1 B, Sig=214,4 Ref=off

RetTim	Width	Area	Height	Area%	MS (+)
1.35	0.02	706.93	616.98	97.46	527
1.38	0.01	17.02	22.39	2.35	324
1.53	0.02	1.41	1.30	0.19	ND

Integration Results for DAD1 C, Sig=254,4 Ref=off

RetTim	Width	Area	Height	Area%	MS (+)
1.35	0.02	516.98	455.61	97.55	527
1.38	0.01	12.14	16.15	2.29	324
1.52	0.02	0.84	0.75	0.16	ND

Integration Results for MSD1 TIC, MS File

RetTim	Width	Area	Height	Area%	MS (+)
1.36	0.03	244888.14	106341.34	100.00	527

Ret. Time: 1.36

<<<< POSITIVE SPECTRA >>>>

ES-API Positive

