

File ..ata\20171013\20171013-1\BIZ2017-013-WYQ12.D Tgt Mass (CHM):

Injection Date : 13 Oct 17 1:17 pm +0800 Seq. Line : 44

Sample Name : BIZ2017-013-WYQ12 Location : P1-E-04

Acq. Operator : SYSTEM Inj : 1

Spec. Reported : MS Integration Inj Volume : 1 ul

Acq. Method : D:\LCMS03\Data\20171013\20171013-1\1-POS-3MIN.M

Analysis Method : D:\LCMS03\Data\20171013\20171013-1\1-POS-3MIN.M

Catalog No : HY-108321 Batch#26717

Method Info : Mobile Phase: A: water(0.01%TFA) B:ACN(0.01%TFA)

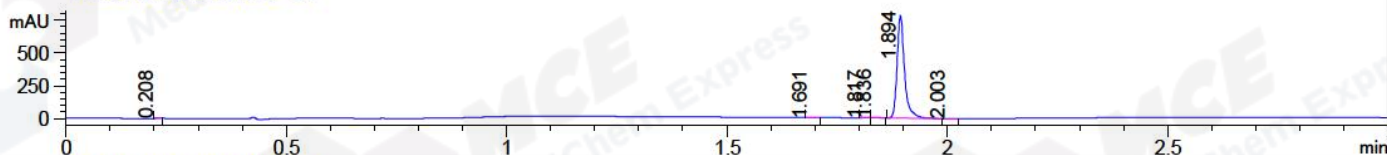
Gradient: 5% to 95%B within 1.3 min

Flow Rate :1.8ml/min

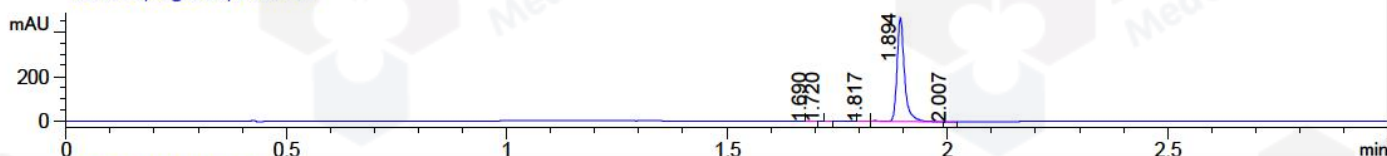
Column :SunFire C18, 4.6*50mm,3.5um A-RP-186

Oven Temperature : 45C

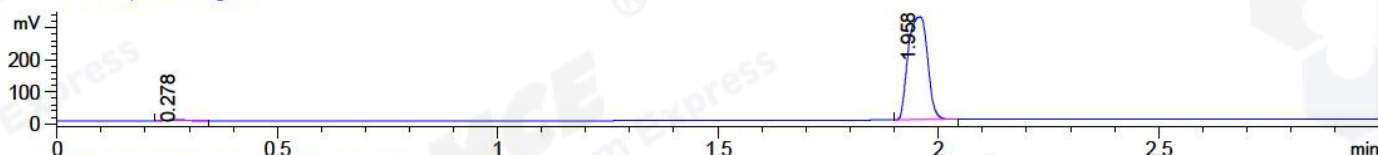
DAD1 A, Sig=214,4 Ref=off



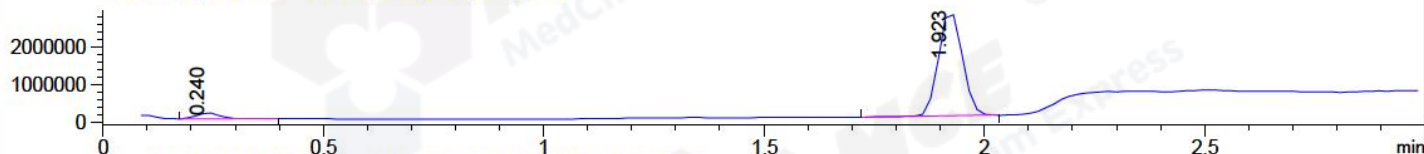
DAD1 B, Sig=254,4 Ref=off



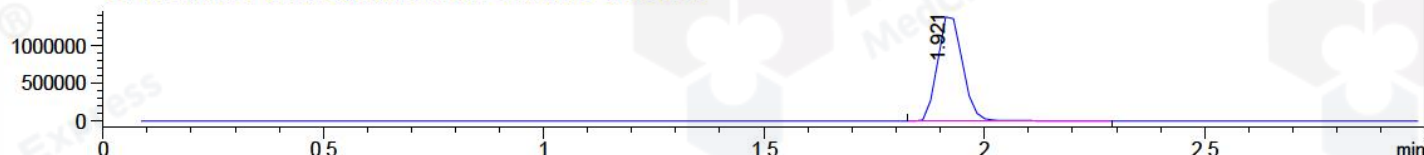
ELS1 A, ELSD Signal



MSD1 TIC, MS File ES-API, Pos, Scan, Frag: 70



Ion 429.1, MSD1 429.1, Target Mass 429.1 Positive, EIC=428.8:429.8



Integration Results for DAD1 A, Sig=214,4 Ref=off

| RetTim | Width | Area | Height | Area% | MS (+) |
|--------|-------|--------|--------|-------|--------|
| 0.21 | 0.01 | 0.41 | 0.64 | 0.04 | 225 |
| 1.69 | 0.02 | 0.74 | 0.63 | 0.08 | 225 |
| 1.82 | 0.02 | 3.57 | 3.75 | 0.39 | 105 |
| 1.84 | 0.02 | 5.85 | 5.48 | 0.63 | 105 |
| 1.89 | 0.02 | 911.18 | 778.76 | 98.81 | 430 |
| 2.00 | 0.02 | 0.37 | 0.38 | 0.04 | 105 |

Integration Results for DAD1 B, Sig=254,4 Ref=off

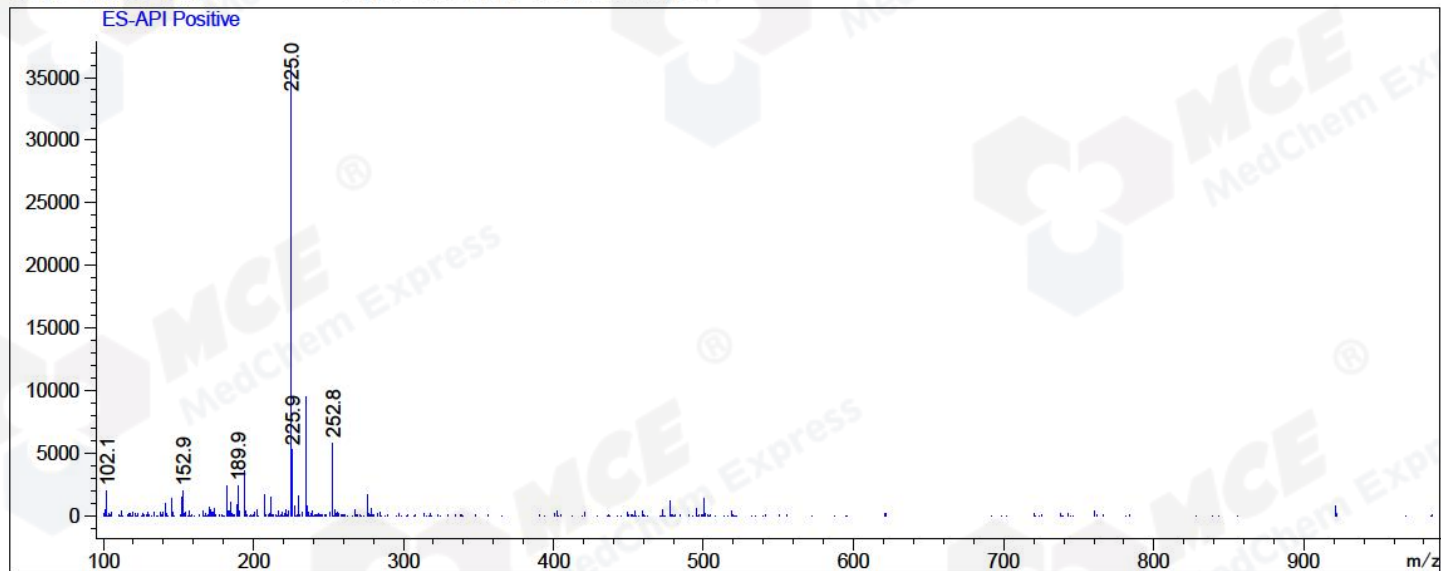
| RetTim | Width | Area | Height | Area% | MS (+) |
|--------|-------|--------|--------|-------|--------|
| 1.69 | 0.01 | 0.16 | 0.18 | 0.03 | 225 |
| 1.72 | 0.01 | 0.05 | -0.01 | 0.01 | 225 |
| 1.82 | 0.02 | 1.38 | 1.46 | 0.25 | 105 |
| 1.89 | 0.02 | 543.95 | 462.07 | 99.68 | 430 |
| 2.01 | 0.01 | 0.17 | 0.20 | 0.03 | 105 |

Integration Results for MSD1 TIC, MS File

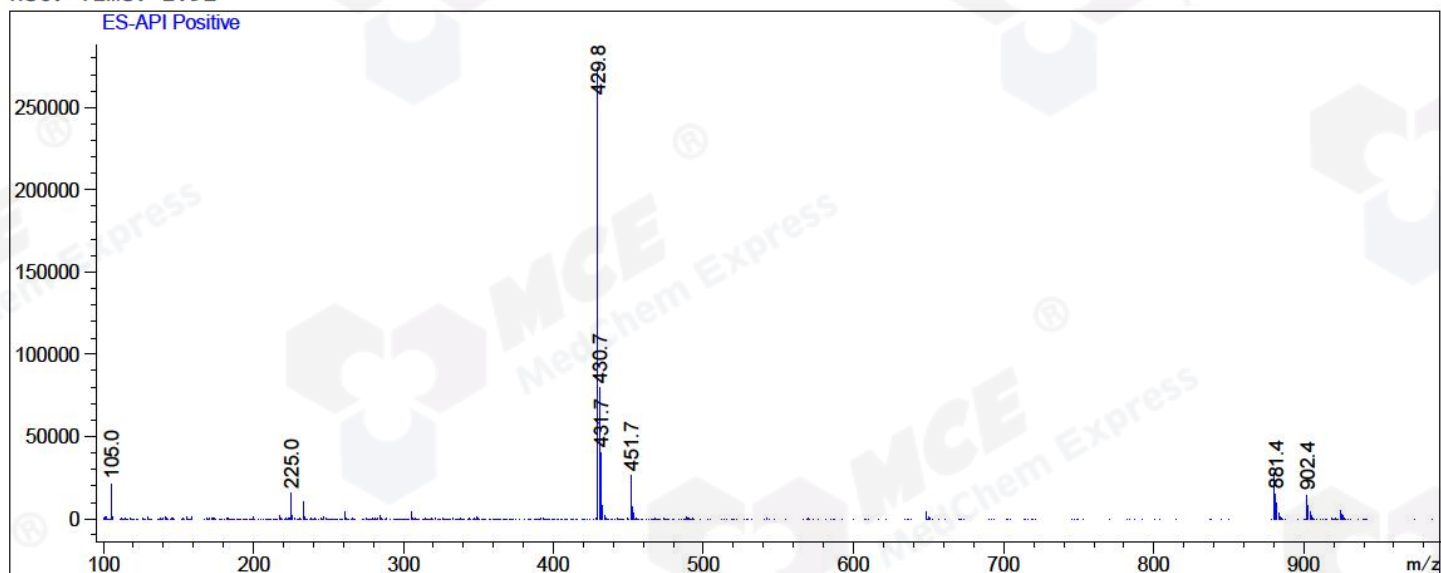
| | | | | | |
|------|------|-------------|------------|-------|-----|
| 0.24 | 0.06 | 557441.06 | 147292.61 | 5.06 | 225 |
| 1.92 | 0.06 | 10454794.00 | 2780483.00 | 94.94 | 430 |

| RetTim | Width | Area | Height | Area% | MS (+) |
|--------|-------|------|--------|-------|--------|
|--------|-------|------|--------|-------|--------|

Ret. Time: 0.24 <<<< POSITIVE SPECTRA >>>>



Ret. Time: 1.92



*** End of Report ***