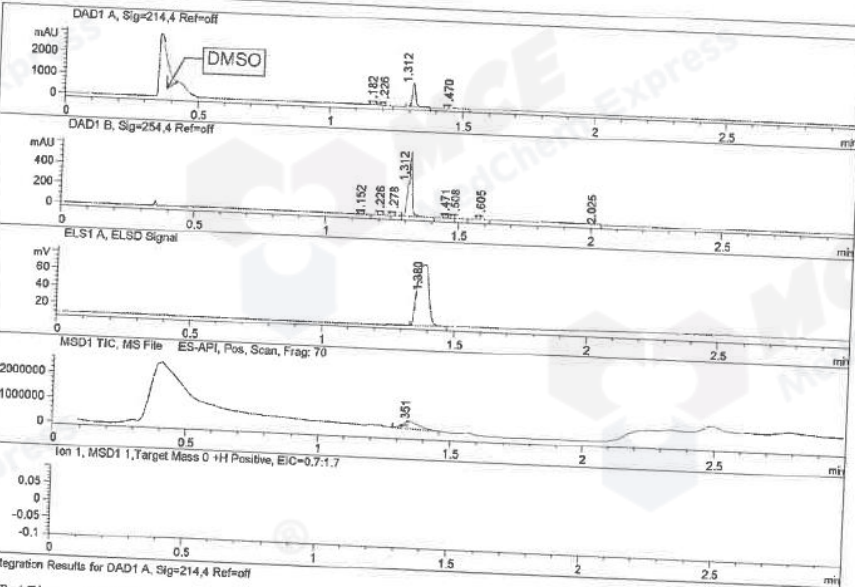


Catalog No: HY-108941 Batch#28873

MS Report from Instrument: LCMS-03

File ..\2018\20180302\20180302 1\FXD5149-011-3_0.D Tgt Mass (CHM):
 Injection Date : 2 Mar 18 10:40 am +0800 Seq. Line : 3
 Location : PI-A-04
 Acq. Operator : SYSTEM Inj : 1
 Spec. Reported : MS Integratio Inj Volume : 3 ul
 Acq. Method : D:\LCMS03\Data\2018\20180302\20180302 1\1-POS-3MIN.M
 Analysis Method : D:\LCMS03\Data\2018\20180302\20180302 1\1-POS-3MIN.M
 Sample Info : HM-560A 3-20180301
 Method Info : Mobile Phase: A: water(0.01%TFA) B:ACN(0.01%TFA)
 Gradient: 5% to 95%B within 1.3 min
 Flow Rate : 1.8ml/min
 Column : SunFire C18, 4.6*50mm,3.5um A-RP-186
 Oven Temperature : 45C



Integration Results for DAD1 A, Sig=214.4 Ref=off

RetTim	Width	Area	Height	Area%	MS (+)
1.18	0.02	1.34	1.47	0.13	157
1.23	0.02	2.52	2.71	0.24	157
1.31	0.01	1023.86	1156.31	98.20	157
1.47	0.03	14.91	9.45	1.43	157

Integration Results for DAD1 B, Sig=254.4 Ref=off

RetTim	Width	Area	Height	Area%	MS (+)
1.15	0.01	0.61	0.75	0.11	157
1.23	0.01	0.90	1.03	0.17	157
1.28	0.01	1.26	1.47	0.23	157
1.31	0.01	535.05	603.45	98.91	157
1.47	0.02	0.67	0.66	0.12	157
1.51	0.03	0.98	0.60	0.18	157
1.60	0.02	0.34	0.31	0.06	157
2.03	0.01	1.09	1.14	0.20	105

Integration Results for ELSD A, ELSD Signal

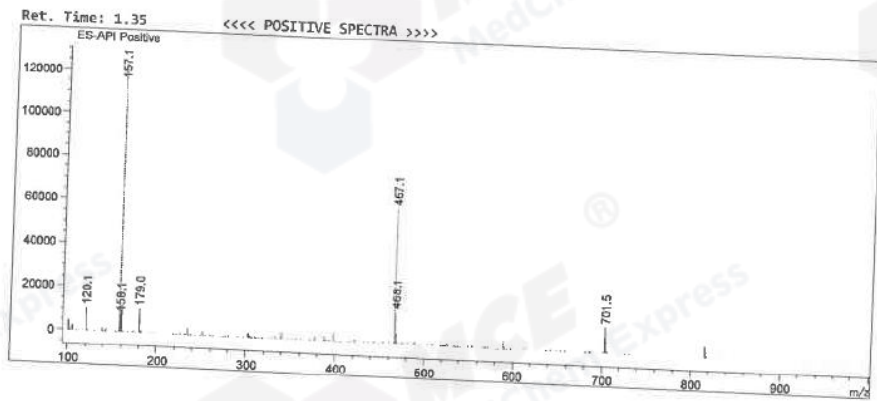
RetTim	Width	Area	Height	Area%	MS (+)
1.38	0.05	216.51	70.91	100.00	157

MS Report from Instrument: LCMS-03

RetTim	Width	Area	Height	Area%	MS (+)
1.38	0.05	216.51	70.91	100.00	157

Integration Results for MSD1 TIC, MS File

RetTim	Width	Area	Height	Area%	MS (+)
1.35	0.08	1420549.63	284434.41	100.00	157



*** End of Report ***