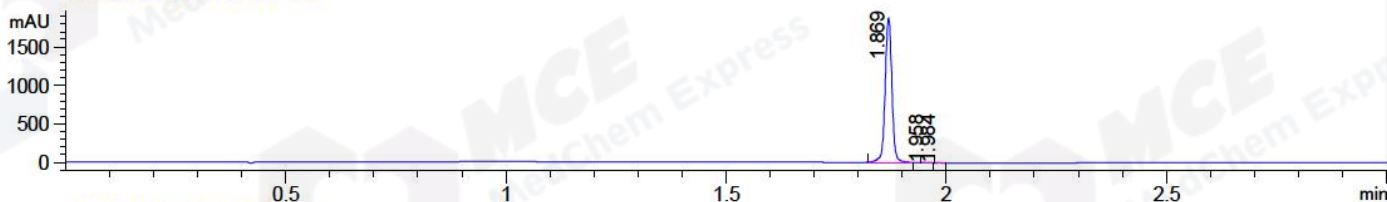


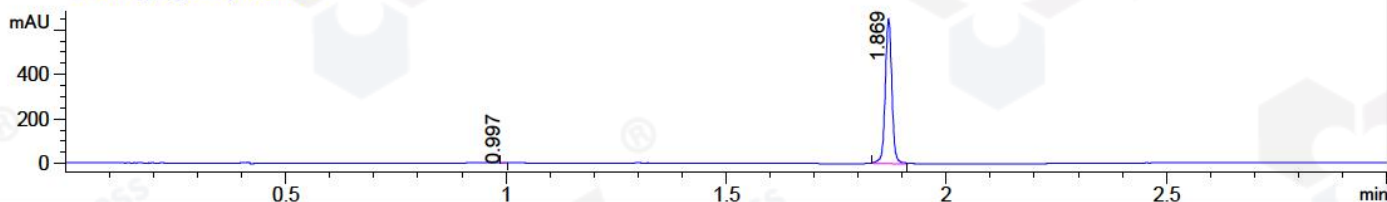
File ..1\DATA\2018\20180918\399\BIZ2018-918-CXL4.D Tgt Mass (CHM):

Injection Date : 18 Sep 18 6:16 pm +0800 Seq. Line : 14  
 Sample Name : BIZ2018-918-CXL4 Location : P1-E-09  
 Acq. Operator : LQ\_1052 Inj : 1  
 Spec. Reported : MS Integration Inj Volume : 1 ul  
 Acq. Method : D:\Chem32\1\data\2018\20180918\399\1-POS-3MIN-1.M  
 Analysis Method : D:\CHEM32\1\DATA\2018\20180918\399\1-POS-3MIN-1.M  
 Catalog No : HY-109044 Batch#32879 A-RP-314  
 Method Info : Mobile Phase: A: water(0.01%TFA) B:ACN(0.01%TFA)  
 Gradient: 5% to 95%B within 1.3 min  
 Flow Rate :1.8ml/min  
 Column :SunFire C18, 4.6\*50mm,3.5um A-RP-314  
 Oven Temperature : 45□

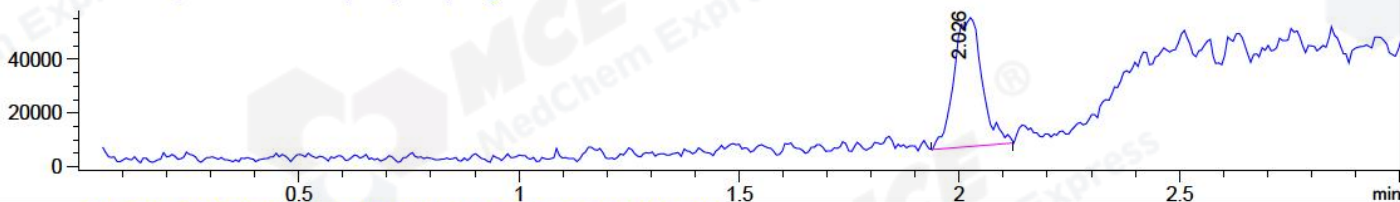
DAD1 B, Sig=214,4 Ref=off



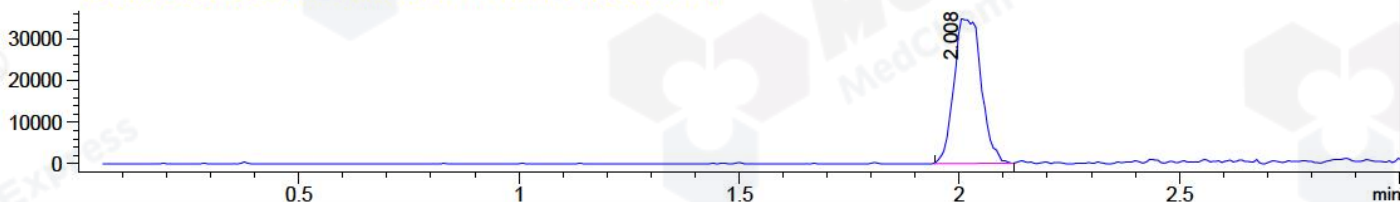
DAD1 C, Sig=254,4 Ref=off



MSD1 TIC, MS File ES-API, Pos, Scan, Frag: 70



Ion 255.1, MSD1 255.1, Target Mass 254.1 +H Positive, EIC=254.8:255.8



## Integration Results for DAD1 B, Sig=214,4 Ref=off

RetTim	Width	Area	Height	Area%	MS (+)
1.87	0.02	2007.75	1879.85	99.74	141
1.96	0.01	3.03	3.47	0.15	255
1.98	0.01	2.11	2.76	0.10	255

## Integration Results for DAD1 C, Sig=254,4 Ref=off

RetTim	Width	Area	Height	Area%	MS (+)
1.00	0.01	0.06	0.10	0.01	ND
1.87	0.02	683.04	651.63	99.99	141

## Integration Results for MSD1 TIC, MS File

RetTim	Width	Area	Height	Area%	MS (+)
2.03	0.06	213789.17	48053.27	100.00	255

Ret. Time: 2.03

<<<< POSITIVE SPECTRA >>>>

ES-API Positive

