

File ..DATA\2020\20200624\1017\BIZ2020-620-WMX7-.D Tgt Mass (CHM):

Injection Date : 24 Jun 20 10:50 am +0800 Seq. Line : 26

Sample Name : BIZ2020-620-WMX7 Location : PI-A-09

Acq. Operator : ZJ_1432 Inj : 1

Spec. Reported : MS Integration Inj Volume : 0.3 ul

Acq. Method : D:\Chem32\1\data\2020\20200624\1017\1-POS-3MIN.M

Analysis Method : D:\CHEM32\1\DATA\2020\20200624\1017\1-POS-3MIN.M

Catalog No : HY-109050

Method Info : Mobile Phase: A: water(0.01%TFA) B:ACN(0.01%TFA)

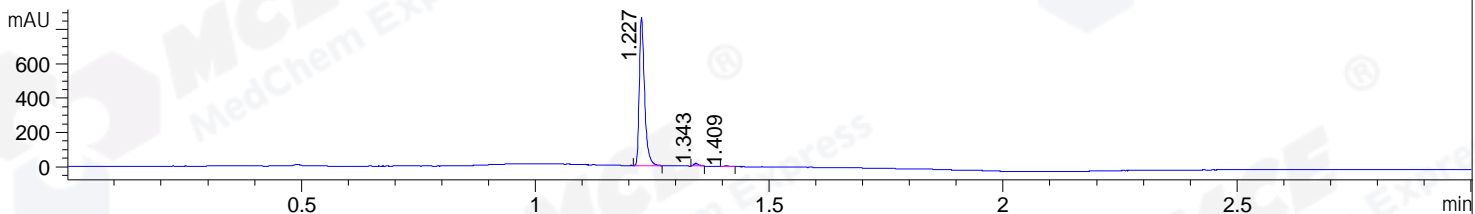
Gradient: 5% to 95%B within 1.3 min

Flow Rate :1.8ml/min

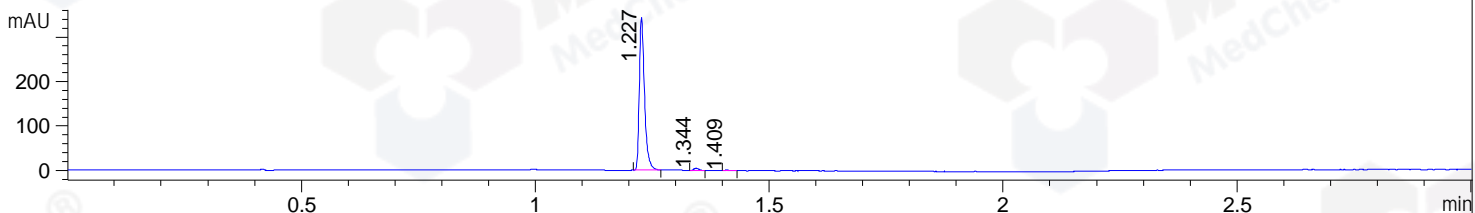
Column :SunFire C18, 4.6*50mm,3.5um A-RP-607

Oven Temperature : 45

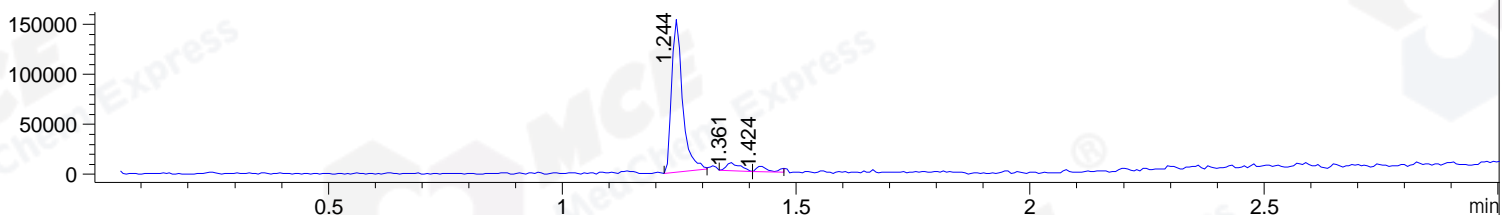
DAD1 B, Sig=214,4 Ref=off



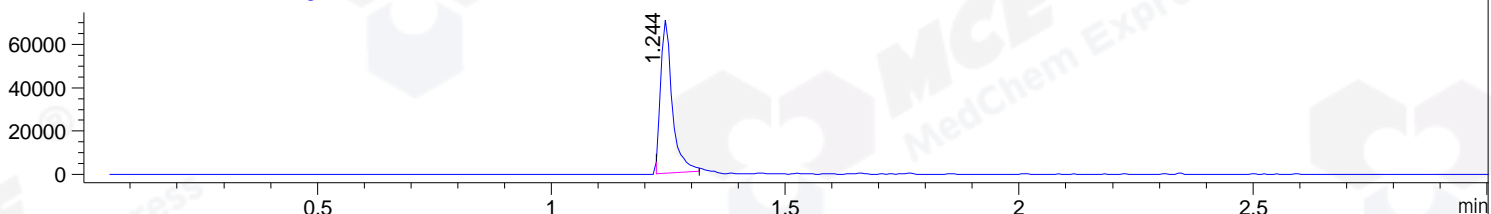
DAD1 C, Sig=254,4 Ref=off



MSD1 TIC, MS File ES-API, Pos, Scan, Frag: 70



Ion 438, MSD1 438, Target Mass 437 +H Positive, EIC=437.7:438.7



Integration Results for DAD1 B, Sig=214,4 Ref=off

RetTim	Width	Area	Height	Area%	MS (+)
1.23	0.01	676.03	868.66	98.07	438
1.34	0.01	10.42	14.94	1.51	516
1.41	0.01	2.90	3.88	0.42	494

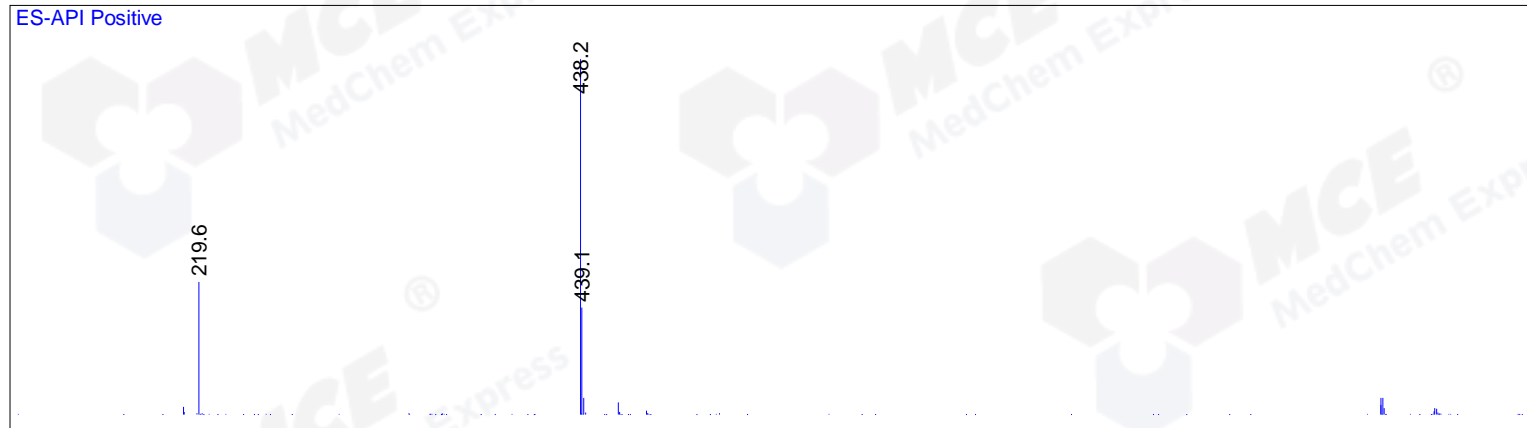
Integration Results for DAD1 C, Sig=254,4 Ref=off

RetTim	Width	Area	Height	Area%	MS (+)
1.23	0.01	266.02	345.00	98.13	438
1.34	0.01	3.93	5.20	1.45	438
1.41	0.01	1.15	1.49	0.42	494

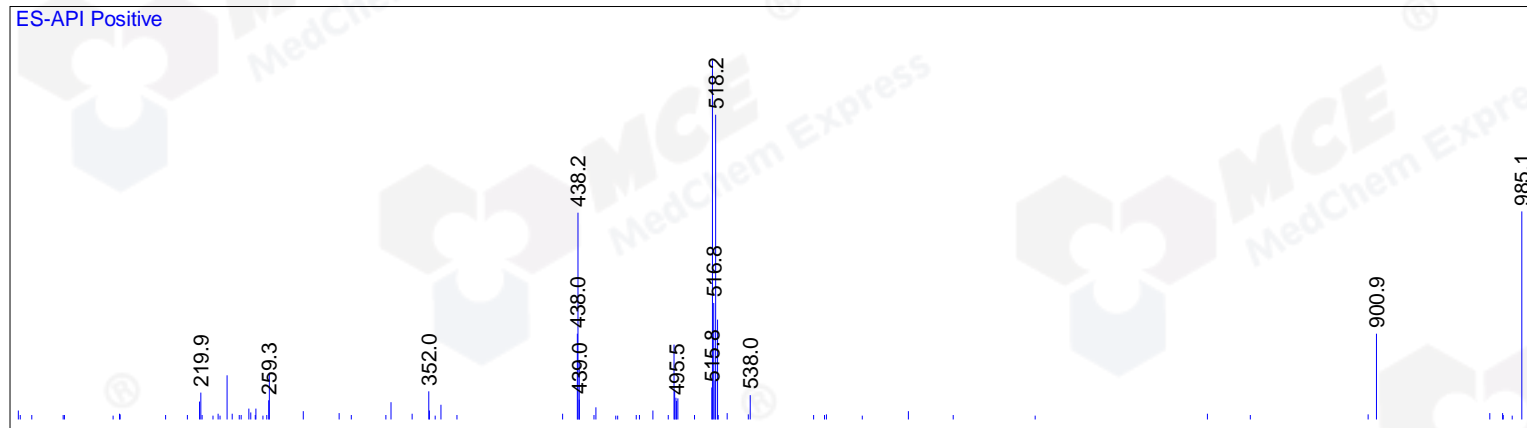
Integration Results for MSD1 TIC, MS File

RetTim	Width	Area	Height	Area%	MS (+)
1.24	0.02	248467.45	152566.33	90.33	438
1.36	0.03	16159.63	7926.68	5.88	516
1.42	0.03	10424.53	5891.47	3.79	494

Ret. Time: 1.24 <<<< POSITIVE SPECTRA >>>>



Ret. Time: 1.36



Ret. Time: 1.42

