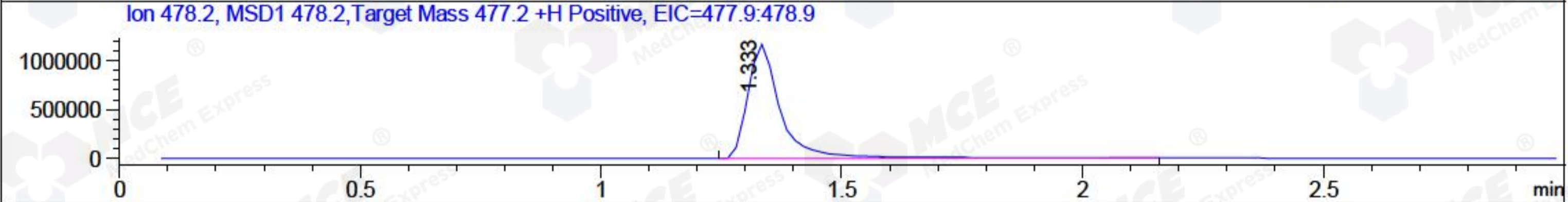
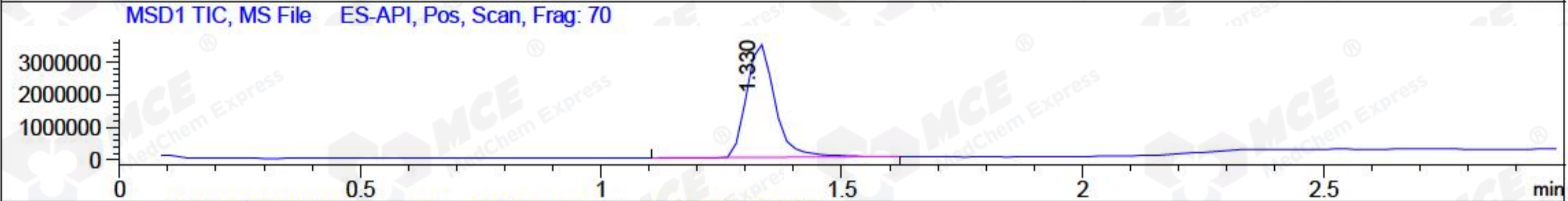
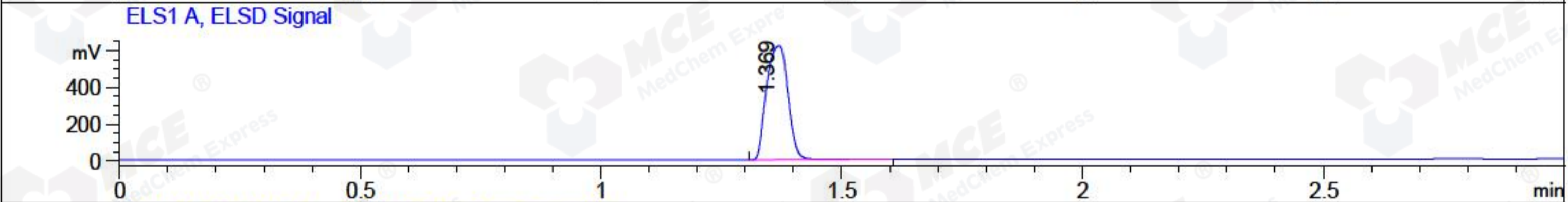
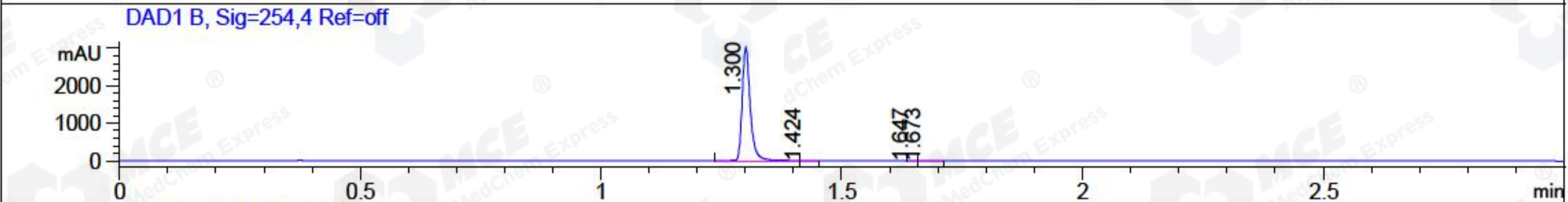
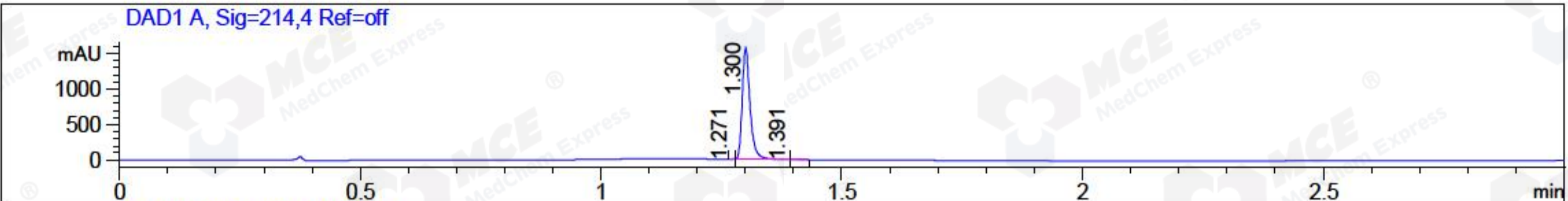


File ..a\2018\20180607\20180607\BIZ2018-607-WYQ7.D Tgt Mass (CHM):  
 Injection Date : 7 Jun 18 8:43 pm +0800 Seq. Line : 149  
 Sample Name : BIZ2018-607-WYQ7 Location : P2-D-11  
 Acq. Operator : SYSTEM Inj : 1  
 Spec. Reported : MS Integration Inj Volume : 2 ul  
 Acq. Method : D:\LCMS03\Data\2018\20180607\20180607\1-POS-3MIN.M  
 Analysis Method : D:\LCMS03\Data\2018\20180607\20180607\1-POS-3MIN.M  
 Catalog No : HY-109566 Batch#30859  
 Method Info : Mobile Phase: A: water(0.01%TFA) B:ACN(0.01%TFA)  
 Gradient: 5% to 95%B within 1.3 min  
 Flow Rate :1.8ml/min  
 Column :SunFire C18, 4.6\*50mm,3.5um A-RP-186  
 Oven Temperature : 45C



Integration Results for DAD1 A, Sig=214,4 Ref=off

RetTim	Width	Area	Height	Area%	MS (+)
1.27	0.01	1.05	2.63	0.06	240
1.30	0.02	1769.88	1580.29	99.81	240
1.39	0.03	2.31	1.22	0.13	478

Integration Results for DAD1 B, Sig=254,4 Ref=off

RetTim	Width	Area	Height	Area%	MS (+)
1.30	0.02	3498.25	3029.38	99.92	240
1.42	0.01	1.05	1.19	0.03	478
1.65	0.01	0.43	0.62	0.01	478
1.67	0.02	1.37	0.92	0.04	233

Integration Results for ELS1 A, ELSD Signal

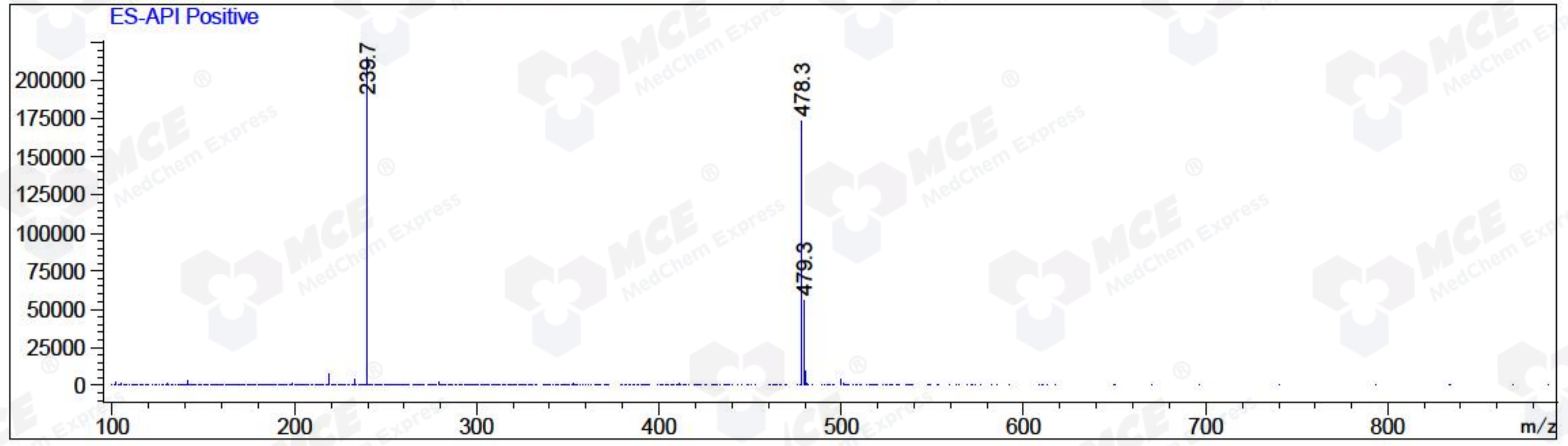
RetTim	Width	Area	Height	Area%	MS (+)
1.37	0.05	1902.85	615.39	100.00	240

## Integration Results for MSD1 TIC, MS File

RetTim	Width	Area	Height	Area%	MS (+)
1.33	0.06	14408426.00	3482625.00	100.00	240

Ret. Time: 1.33

<<<< POSITIVE SPECTRA >>>>



\*\*\* End of Report \*\*\*