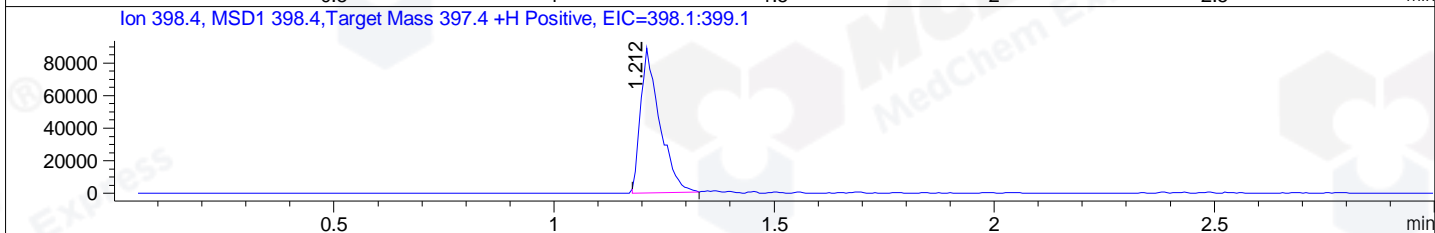
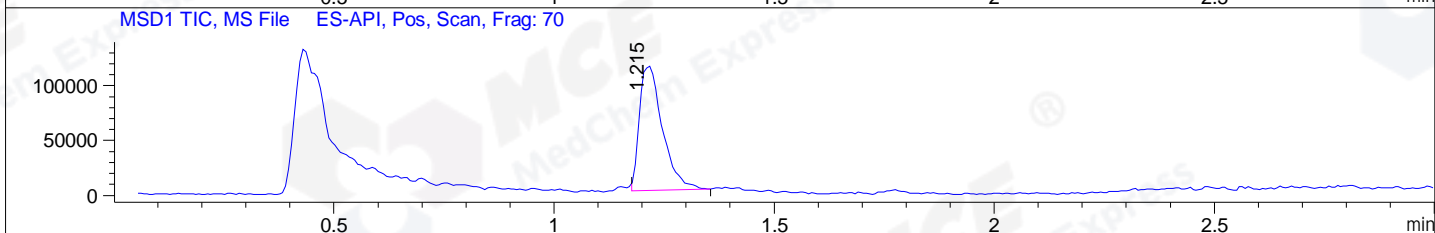
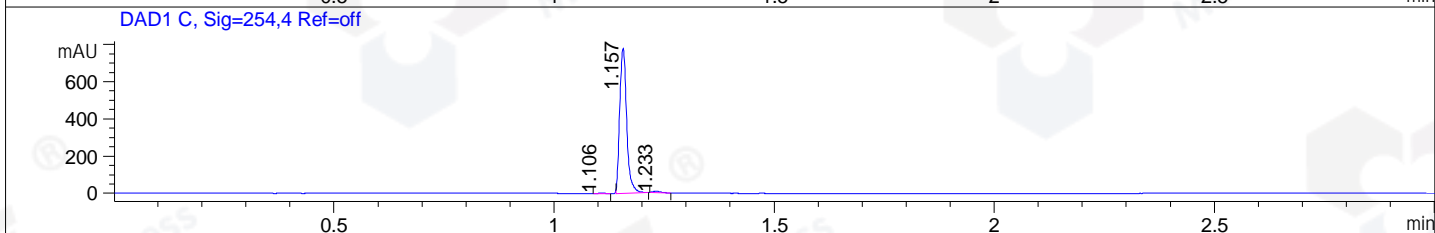
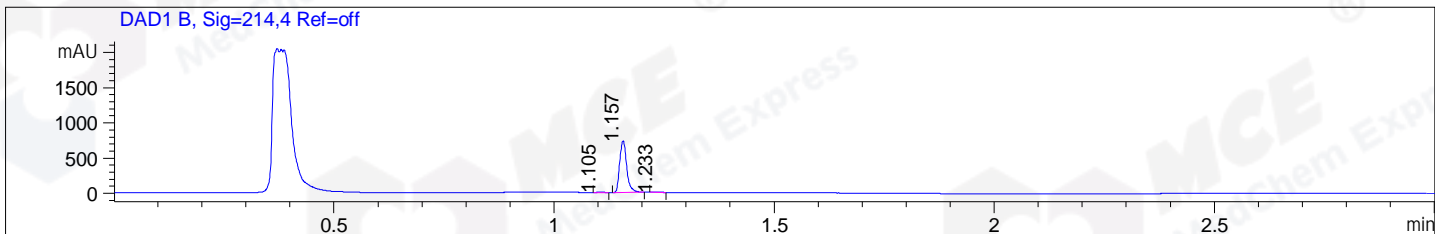


File ..\DATA\2019\20190115\550\CPK2019-114-05133.D Tgt Mass (CHM):
 Injection Date : 15 Jan 19 10:06 am +0800 Seq. Line : 13
 Sample Name : CPK2019-114-05133 Location : P1-B-02
 Acq. Operator : LQ_1052 Inj : 1
 Spec. Reported : MS Integration Inj Volume : 1 ul
 Acq. Method : D:\Chem32\1\data\2019\20190115\550\1-POS-3MIN-1.M
 Analysis Method : D:\CHEM32\1\DATA\2019\20190115\550\1-POS-3MIN-1.M
 Catalog No : HY-10990 Batch#05133 BY DMSO
 Method Info : Mobile Phase: A: water(0.01%TFA) B:ACN(0.01%TFA)
 Gradient: 5% to 95%B within 1.3 min
 Flow Rate :1.8ml/min
 Column :SunFire C18, 4.6*50mm,3.5um A-RP-314
 Oven Temperature : 45□



Integration Results for DAD1 B, Sig=214,4 Ref=off

RetTim	Width	Area	Height	Area%	MS (+)
1.11	0.02	4.98	5.09	0.61	157
1.16	0.02	811.65	735.67	98.61	398
1.23	0.02	6.44	5.52	0.78	398

Integration Results for DAD1 C, Sig=254,4 Ref=off

RetTim	Width	Area	Height	Area%	MS (+)
1.11	0.02	3.39	2.62	0.39	157
1.16	0.02	853.82	779.76	98.76	398
1.23	0.02	7.36	5.99	0.85	398

Integration Results for MSD1 TIC, MS File

RetTim	Width	Area	Height	Area%	MS (+)
1.22	0.05	413208.16	113340.69	100.00	398

Ret. Time: 1.22

<<<< POSITIVE SPECTRA >>>>

ES-API Positive

