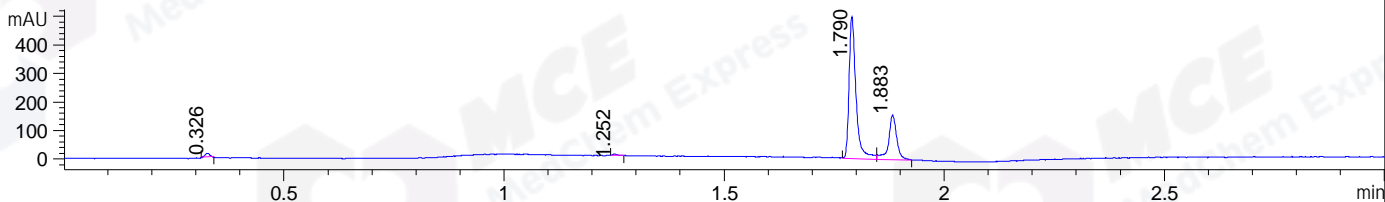
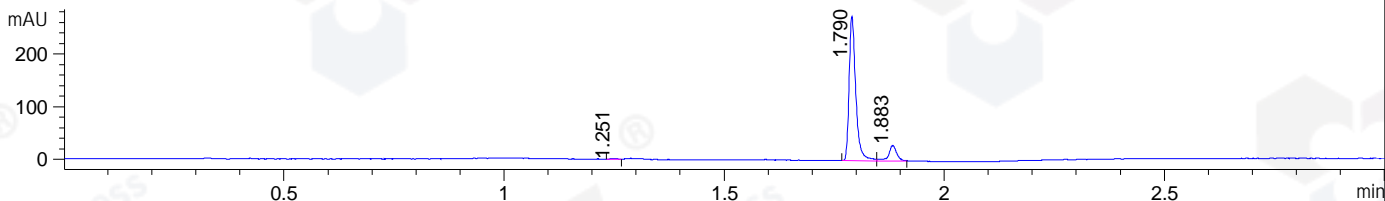


File ..ATA\2020\20200723\1051\CPK2020-723-28341-.D Tgt Mass (CHM):  
 Injection Date : 23 Jul 20 1:48 pm +0800 Seq. Line : 39  
 Sample Name : CPK2020-723-28341 Location : P1-D-05  
 Acq. Operator : ZJ\_1432 Inj : 1  
 Spec. Reported : MS Integration Inj Volume : 0.2 ul  
 Acq. Method : D:\Chem32\1\data\2020\20200723\1051\1-POS-3MIN.M  
 Analysis Method : D:\CHEM32\1\DATA\2020\20200723\1051\1-POS-3MIN.M  
 Catalog No : HY-111285  
 Method Info : Mobile Phase: A: water(0.01%TFA) B:ACN(0.01%TFA)  
 Gradient: 5% to 95%B within 1.3 min  
 Flow Rate :1.8ml/min  
 Column :SunFire C18, 4.6\*50mm,3.5um A-RP-607  
 Oven Temperature : 45□

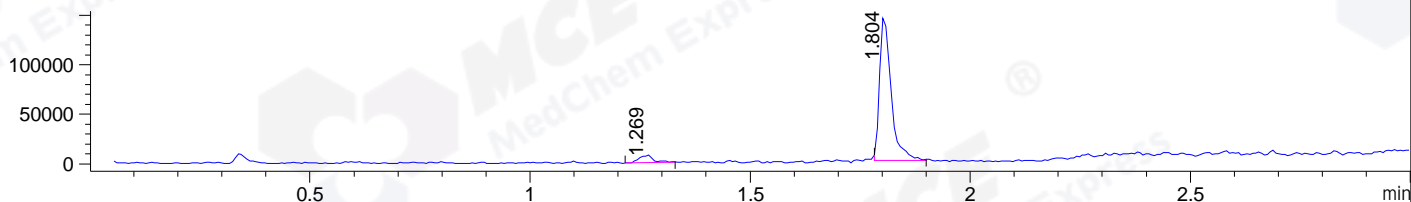
DAD1 B, Sig=214,4 Ref=off



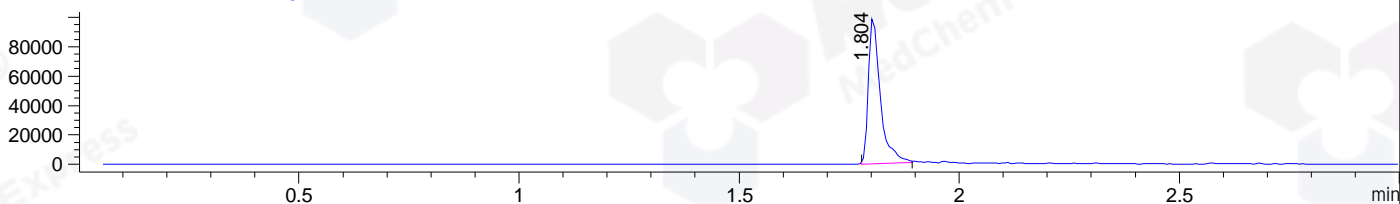
DAD1 C, Sig=254,4 Ref=off



MSD1 TIC, MS File ES-API, Pos, Scan, Frag: 70



Ion 264, MSD1 264, Target Mass 263 +H Positive, EIC=263.7:264.7



## Integration Results for DAD1 B, Sig=214,4 Ref=off

RetTim	Width	Area	Height	Area%	MS (+)
0.33	0.01	8.70	12.34	1.14	110
1.25	0.01	3.18	4.57	0.42	324
1.79	0.02	549.25	499.67	71.93	264
1.88	0.02	202.50	157.02	26.52	264

## Integration Results for DAD1 C, Sig=254,4 Ref=off

RetTim	Width	Area	Height	Area%	MS (+)
1.25	0.01	1.16	1.47	0.36	324
1.79	0.02	289.10	274.84	88.15	264
1.88	0.02	37.71	29.09	11.50	264

## Integration Results for MSD1 TIC, MS File

RetTim	Width	Area	Height	Area%	MS (+)
1.27	0.03	17159.85	7719.48	6.07	ND
1.80	0.03	265662.13	147835.95	93.93	264

Ret. Time: 1.80

ES-API Positive

