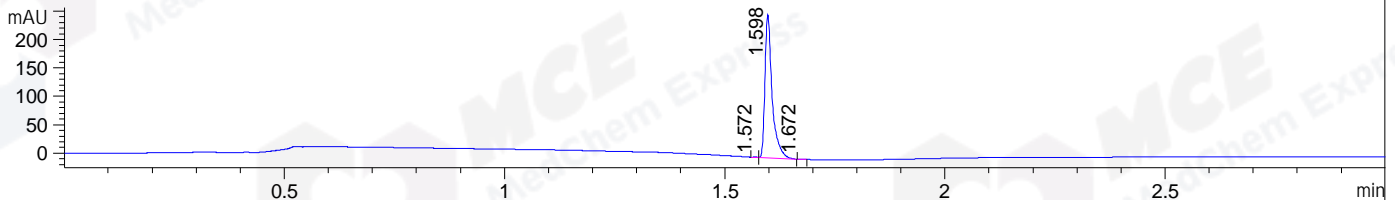
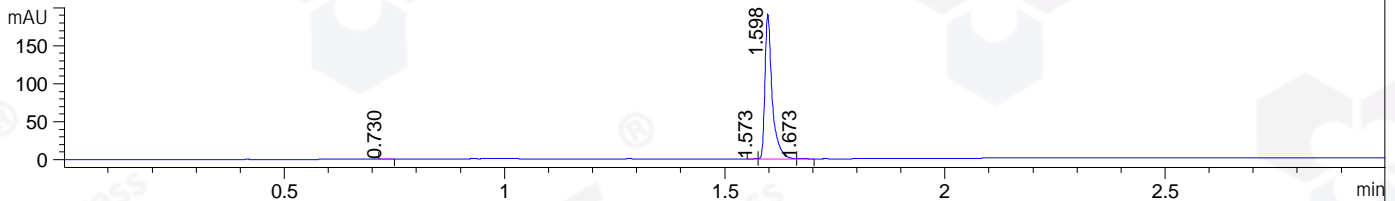


File ..121 2019-11-21 08-32-10\BIZ2019-N21-CXL11.D Tgt Mass (CHM):
 Injection Date : 21 Nov 19 8:30 pm +0800 Seq. Line : 140
 Sample Name : BIZ2019-N21-CXL11 Location : P1-C-09
 Acq. Operator : SYSTEM Inj : 1
 Spec. Reported : MS Integration Inj Volume : 0.3 ul
 Acq. Method : D:\LCMS03\Data\20191121\20191121 2019-11-21 08-32-10\1-POS-3MIN.M
 Analysis Method : D:\CHEM32\1\DATA\2019\20191121\20191121 2019-11-21 08-32-10\1-POS-3MIN.M
 Catalog No : HY-112703 Batch#56610
 Method Info : Mobile Phase: A: water(0.01%TFA) B:ACN(0.01%TFA)
 Gradient: 5% to 95%B within 1.3 min
 Flow Rate :1.8ml/min
 Column :SunFire C18, 4.6*50mm,3.5um A-RP-446
 Oven Temperature : 45C

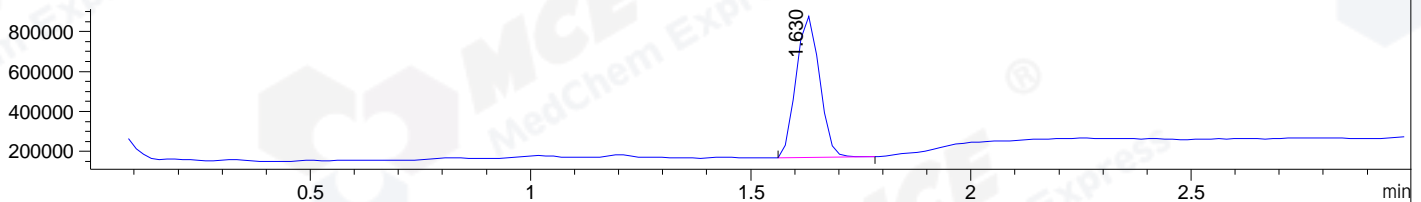
DAD1 A, Sig=214,4 Ref=off



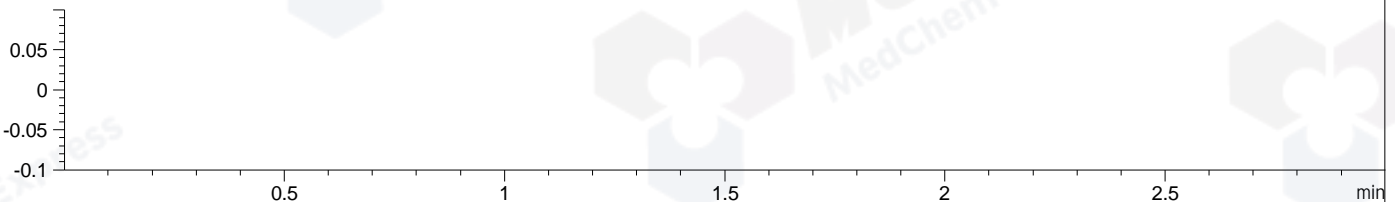
DAD1 B, Sig=254,4 Ref=off



MSD1 TIC, MS File ES-API, Pos, Scan, Frag: 70



Ion 1, MSD1 1, Target Mass 0 +H Positive, EIC=0.7:1.7



Integration Results for DAD1 A, Sig=214,4 Ref=off

RetTim	Width	Area	Height	Area%	MS (+)
1.57	0.01	0.44	0.64	0.15	114
1.60	0.02	285.78	252.74	99.76	454
1.67	0.01	0.24	0.36	0.08	114

Integration Results for DAD1 B, Sig=254,4 Ref=off

RetTim	Width	Area	Height	Area%	MS (+)
0.73	0.02	0.38	0.40	0.17	114
1.57	0.01	0.41	0.57	0.19	114
1.60	0.02	216.90	190.73	99.22	454
1.67	0.02	0.92	0.90	0.42	114

Integration Results for MSD1 TIC, MS File

RetTim	Width	Area	Height	Area%	MS (+)
1.63	0.06	2617060.50	711819.81	100.00	454

Ret. Time: 1.63

<<<< POSITIVE SPECTRA >>>>

ES-API Positive

