

File ..\DATA\2019\20190510\570\BIZ2019-509-WYQ12.D Tgt Mass (CHM):

Injection Date : 10 May 19 1:35 pm +0800 Seq. Line : 32

Sample Name : BIZ2019-509-WYQ12 Location : P1-F-04

Acq. Operator : LQ_1052 Inj : 1

Spec. Reported : MS Integration Inj Volume : 1 ul

Acq. Method : D:\Chem32\1\data\2019\20190510\570\1-POS-3MIN.M

Analysis Method : D:\CHEM32\1\DATA\2019\20190510\570\1-POS-3MIN.M

Catalog No : HY-122022 Batch#41120

Method Info : Mobile Phase: A: water(0.01%TFA) B:ACN(0.01%TFA)

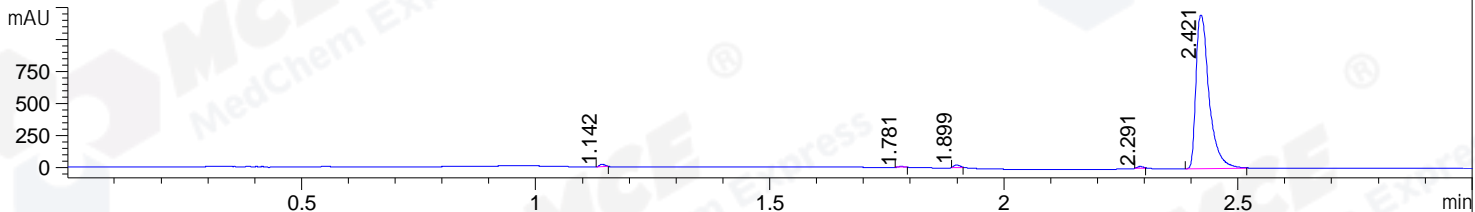
Gradient: 5% to 95%B within 1.3 min

Flow Rate :1.8ml/min

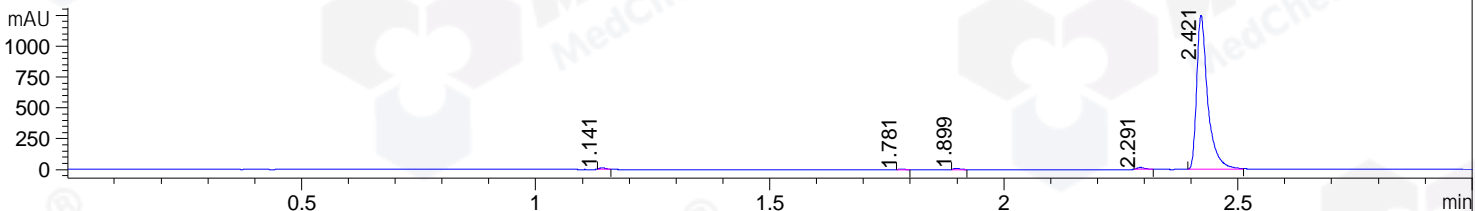
Column :SunFire C18, 4.6*50mm,3.5um A-RP-322

Oven Temperature : 45

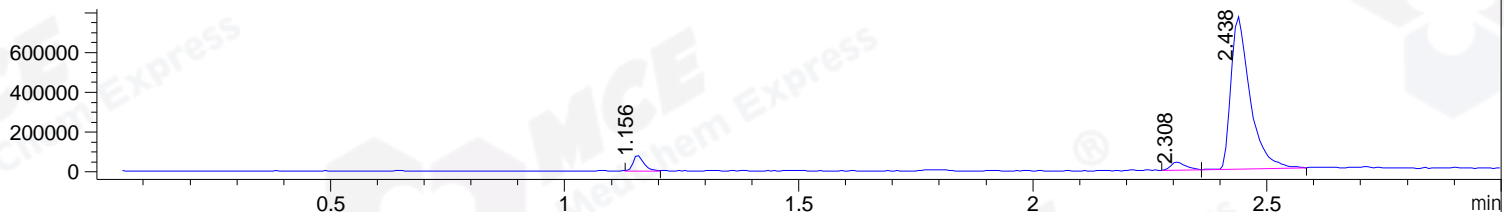
DAD1 B, Sig=214,4 Ref=off



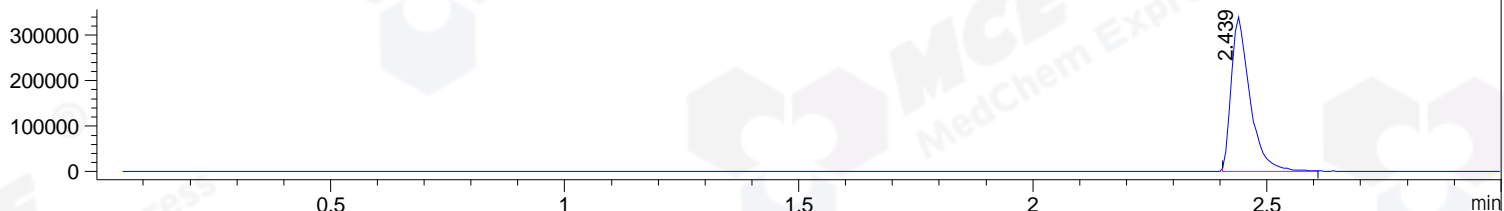
DAD1 C, Sig=254,4 Ref=off



MSD1 TIC, MS File ES-API, Pos, Scan, Frag: 70



Ion 398, MSD1 398, Target Mass 397 +H Positive, EIC=397.7:398.7



Integration Results for DAD1 B, Sig=214,4 Ref=off

RetTim	Width	Area	Height	Area%	MS (+)
1.14	0.01	14.38	18.25	0.60	211
1.78	0.01	5.08	6.29	0.21	305
1.90	0.01	17.09	20.97	0.71	ND
2.29	0.01	10.91	12.95	0.46	382
2.42	0.03	2349.54	1201.16	98.02	398

Integration Results for DAD1 C, Sig=254,4 Ref=off

RetTim	Width	Area	Height	Area%	MS (+)
1.14	0.01	10.70	12.92	0.51	211
1.78	0.01	3.31	3.74	0.16	305
1.90	0.02	10.37	10.88	0.49	ND
2.29	0.02	17.45	15.19	0.83	382
2.42	0.02	2060.71	1249.67	98.01	398

Integration Results for MSD1 TIC, MS File

RetTim	Width	Area	Height	Area%	MS (+)
--------	-------	------	--------	-------	--------

1.16	0.02	123924.03	78894.09	5.16	211
2.31	0.03	85769.53	38002.13	3.57	382
2.44	0.04	2190683.00	768197.56	91.26	398

Ret. Time: 1.16

<<<< POSITIVE SPECTRA >>>>

ES-API Positive



Ret. Time: 2.31

ES-API Positive



Ret. Time: 2.44

ES-API Positive

