

File ..\DATA\2020\20200520\967\BIZ2020-518-SCH9-.D Tgt Mass (CHM):

Injection Date : 20 May 20 11:41 am +0800 Seq. Line : 37

Sample Name : BIZ2020-518-SCH9 Location : PL-C-04

Acq. Operator : ZJ\_1432 Inj : 1

Spec. Reported : MS Integration Inj Volume : 0.5 ul

Acq. Method : D:\Chem32\1\data\2020\20200520\967\1-POS-3MIN.M

Analysis Method : D:\CHEM32\1\DATA\2020\20200520\967\1-POS-3MIN.M

Catalog No : HY-12354

Method Info : Mobile Phase: A: water(0.01%TFA) B:ACN(0.01%TFA)

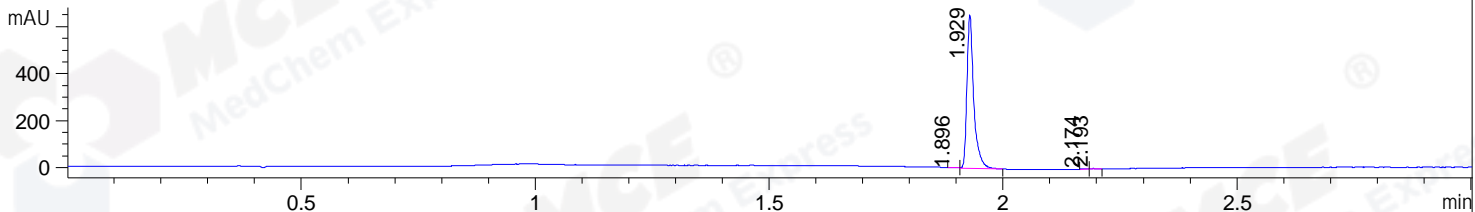
Gradient: 5% to 95%B within 1.3 min

Flow Rate :1.8ml/min

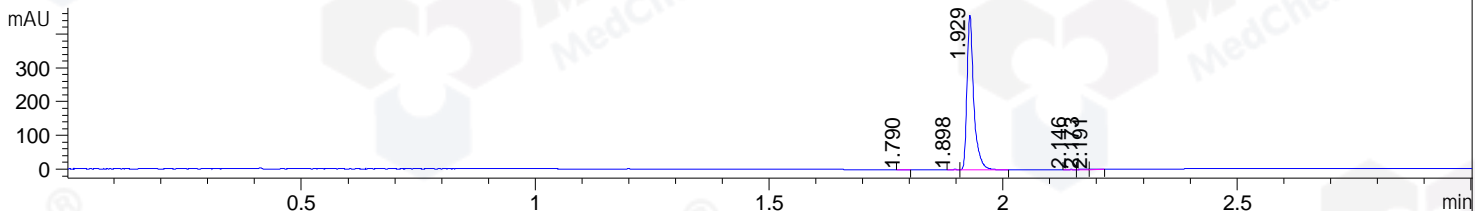
Column :SunFire C18, 4.6\*50mm,3.5um A-RP-607

Oven Temperature : 45

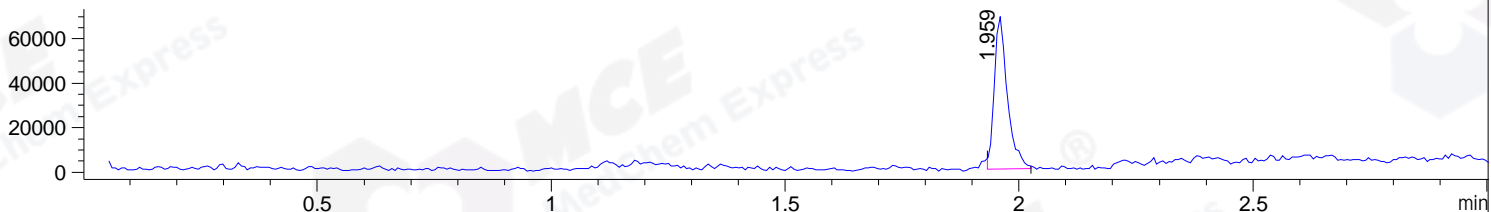
DAD1 B, Sig=214,4 Ref=off



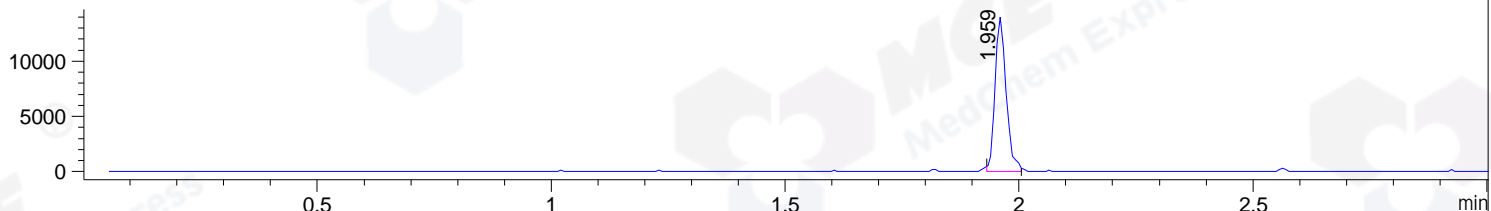
DAD1 C, Sig=254,4 Ref=off



MSD1 TIC, MS File ES-API, Pos, Scan, Frag: 70



Ion 307, MSD1 307, Target Mass 306 +H Positive, EIC=306.7:307.7



Integration Results for DAD1 B, Sig=214,4 Ref=off

RetTim	Width	Area	Height	Area%	MS (+)
1.90	0.01	1.22	1.70	0.18	ND
1.93	0.02	658.55	652.55	99.35	329
2.17	0.01	1.38	1.67	0.21	ND
2.19	0.02	1.72	1.87	0.26	ND

Integration Results for DAD1 C, Sig=254,4 Ref=off

RetTim	Width	Area	Height	Area%	MS (+)
1.79	0.01	0.35	0.43	0.07	ND
1.90	0.01	1.07	1.34	0.23	ND
1.93	0.02	464.19	458.99	98.84	329
2.15	0.02	1.03	0.87	0.22	ND
2.17	0.02	1.68	1.66	0.36	ND
2.19	0.02	1.32	1.43	0.28	ND

Integration Results for MSD1 TIC, MS File

RetTim	Width	Area	Height	Area%	MS (+)
--------	-------	------	--------	-------	--------

1.96 0.03 133156.22 68750.09 100.00 329

Ret. Time: 1.96

<<<< POSITIVE SPECTRA >>>>

ES-API Positive

