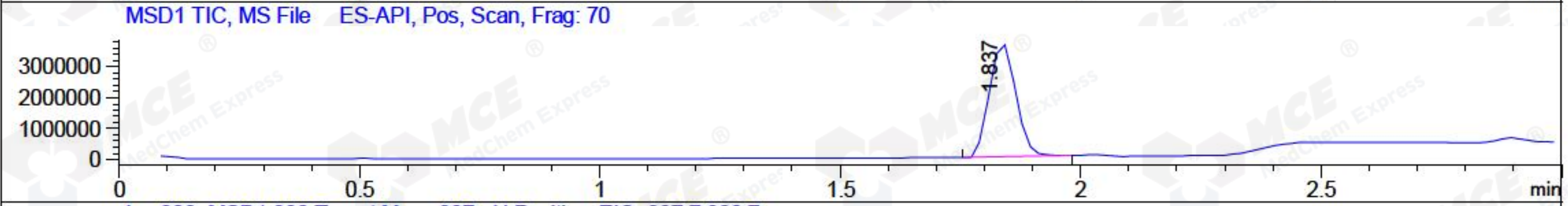
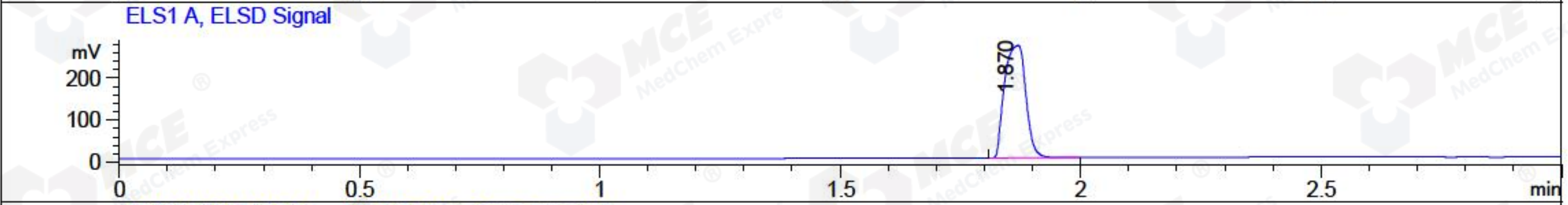
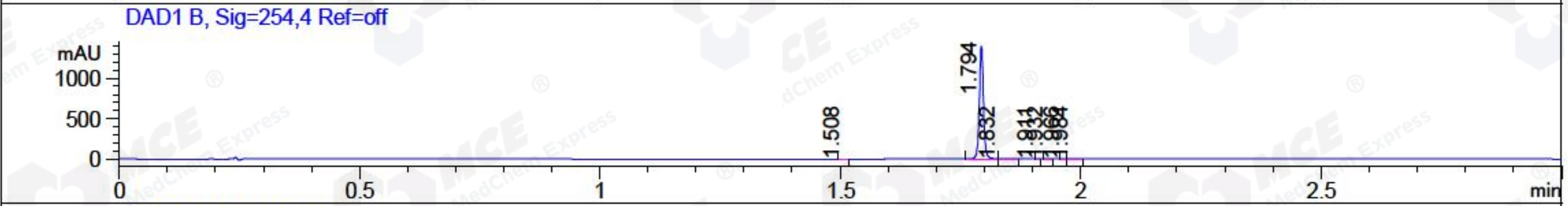
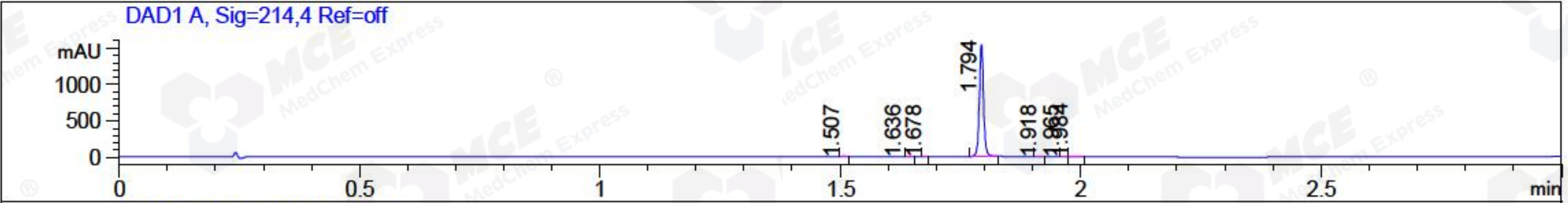


File ..3\Data\20171122\20171122\BIZ2017-N22-WYQ4.D Tgt Mass (CHM):
 Injection Date : 22 Nov 17 3:43 pm +0800 Seq. Line : 83
 Sample Name : BIZ2017-N22-WYQ4 Location : P1-F-05
 Acq. Operator : SYSTEM Inj : 1
 Spec. Reported : MS Integration Inj Volume : 1 ul
 Acq. Method : D:\LCMS03\Data\20171122\20171122\1-POS-3MIN(1.2ML).M
 Analysis Method : D:\LCMS03\Data\20171122\20171122\1-POS-3MIN(1.2ML).M
 Catalog No : HY-12507 Batch#27358
 Method Info : Mobile Phase: A: water(0.01%TFA) B:ACN(0.01%TFA)
 Gradient: 5% to 95%B within 1.3 min
 Flow Rate :1.2ml/min
 Column :Poroshell 120 EC-C18, 3.0*50mm,2.7um A-RP-170
 Oven Temperature : 45C



Integration Results for DAD1 A, Sig=214,4 Ref=off

RetTim	Width	Area	Height	Area%	MS (+)
1.51	0.01	0.82	1.51	0.09	ND
1.64	0.02	0.39	0.27	0.04	233
1.68	0.01	0.26	0.40	0.03	527
1.79	0.01	928.96	1544.94	99.56	398
1.92	0.01	0.38	0.48	0.04	398
1.97	0.01	0.06	0.13	0.01	420
1.98	0.01	2.15	3.55	0.23	420

Integration Results for DAD1 B, Sig=254,4 Ref=off

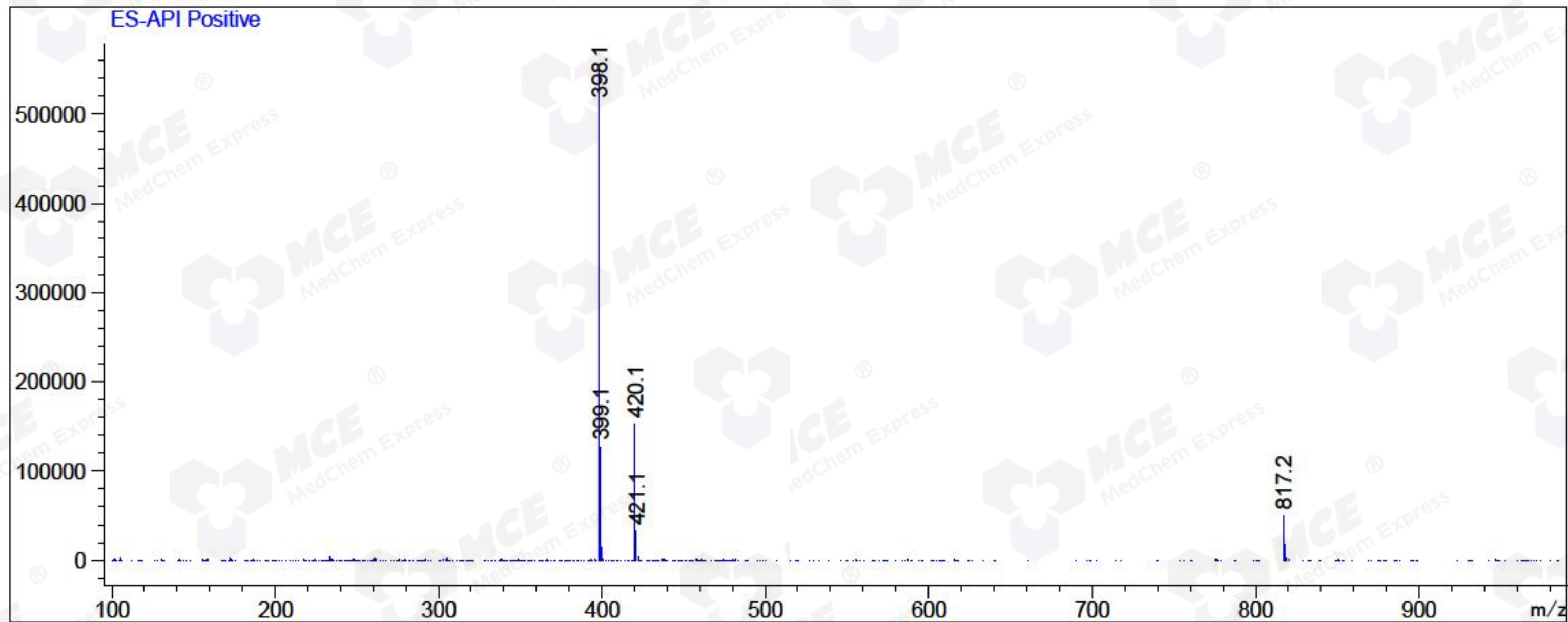
RetTim	Width	Area	Height	Area%	MS (+)
1.51	0.01	0.16	0.28	0.02	ND
1.79	0.01	840.02	1401.82	99.47	398
1.83	0.01	2.45	2.83	0.29	398
1.91	0.01	0.11	0.21	0.01	420
1.93	0.01	0.34	0.51	0.04	420
1.97	0.01	0.03	0.07	0.00	420
1.98	0.01	1.42	2.38	0.17	420

Integration Results for MSD1 TIC, MS File

RetTim	Width	Area	Height	Area%	MS (+)
1.84	0.06	13873033.00	3669256.25	100.00	398

Ret. Time: 1.84

<<<< POSITIVE SPECTRA >>>>



*** End of Report ***