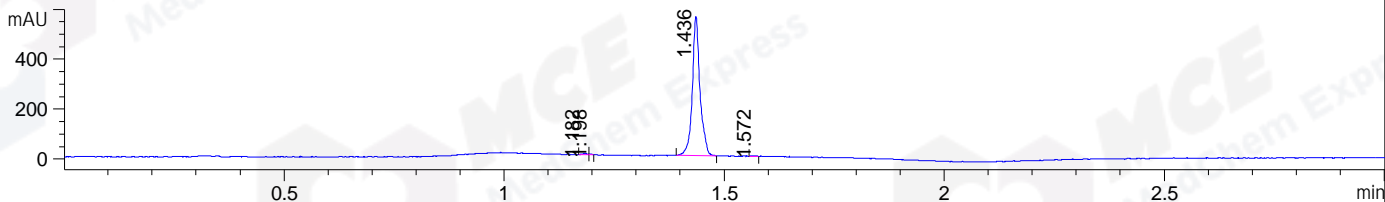
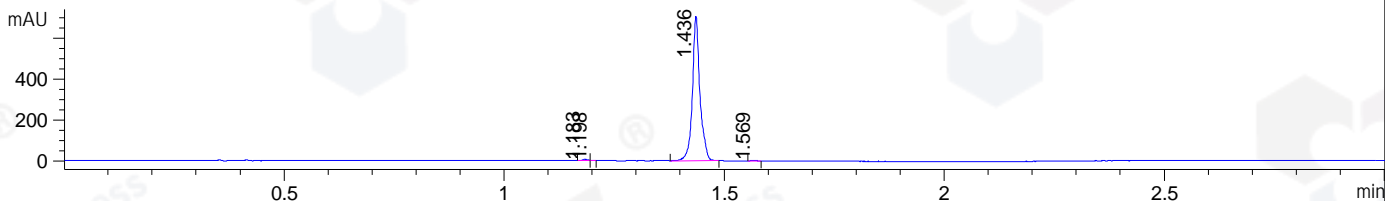


File ..DATA\2020\20200805\1063\CPK2020-805-15839.D Tgt Mass (CHM):
 Injection Date : 5 Aug 20 4:06 pm +0800 Seq. Line : 72
 Sample Name : CPK2020-805-15839 Location : P1-C-09
 Acq. Operator : ZJ_1432 Inj : 1
 Spec. Reported : MS Integration Inj Volume : 1 ul
 Acq. Method : D:\Chem32\1\data\2020\20200805\1063\1-POS-3MIN.M
 Analysis Method : D:\CHEM32\1\DATA\2020\20200805\1063\1-POS-3MIN.M
 CAS NO. : 1454682-72-4
 Method Info : Mobile Phase: A: water(0.01%TFA) B:ACN(0.01%TFA)
 Gradient: 5% to 95%B within 1.3 min
 Flow Rate :1.8ml/min
 Column :SunFire C18, 4.6*50mm,3.5um A-RP-314
 Oven Temperature : 45C

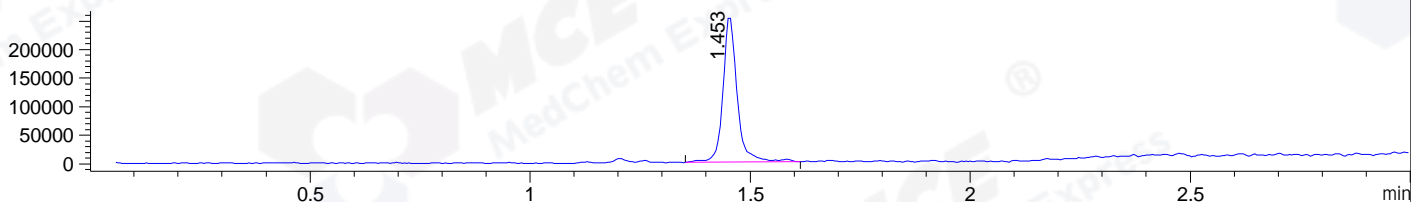
DAD1 B, Sig=214,4 Ref=off



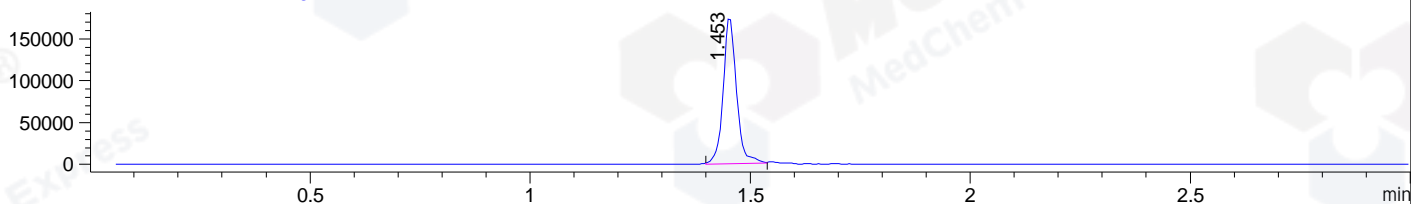
DAD1 C, Sig=254,4 Ref=off



MSD1 TIC, MS File ES-API, Pos, Scan, Frag: 70



Ion 425, MSD1 425, Target Mass 424 +H Positive, EIC=424.7:425.7



Integration Results for DAD1 B, Sig=214,4 Ref=off

RetTim	Width	Area	Height	Area%	MS (+)
1.18	0.01	3.99	4.61	0.58	ND
1.20	0.01	0.86	2.03	0.12	355
1.44	0.02	681.22	558.18	99.01	425
1.57	0.01	1.94	2.26	0.28	425

Integration Results for DAD1 C, Sig=254,4 Ref=off

RetTim	Width	Area	Height	Area%	MS (+)
1.18	0.01	4.84	5.66	0.56	ND
1.20	0.01	0.78	1.62	0.09	355
1.44	0.02	849.16	707.50	99.07	425
1.57	0.01	2.35	2.63	0.27	425

Integration Results for MSD1 TIC, MS File

RetTim	Width	Area	Height	Area%	MS (+)
1.45	0.03	573826.69	256523.34	100.00	425

Ret. Time: 1.45

<<<< POSITIVE SPECTRA >>>>

ES-API Positive

