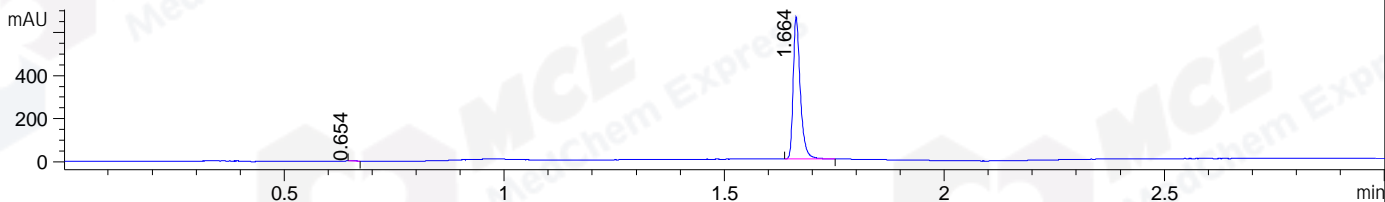
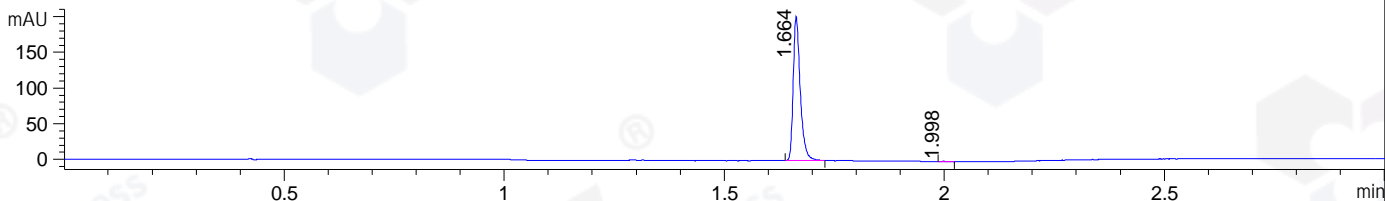


File ..1\DATA\2019\20191119\762\BIZ2019-N18-WMX6.D Tgt Mass (CHM):
 Injection Date : 19 Nov 19 9:07 am +0800 Seq. Line : 5
 Sample Name : BIZ2019-N18-WMX6 Location : P1-D-02
 Acq. Operator : ZJ_1432 Inj : 1
 Spec. Reported : MS Integration Inj Volume : 0.25 ul
 Acq. Method : D:\Chem32\1\data\2019\20191119\762\1-POS-3MIN.M
 Analysis Method : D:\CHEM32\1\DATA\2019\20191119\762\1-POS-3MIN.M
 Catalog No : HY-126307 Batch#55619
 Method Info : Mobile Phase: A: water(0.01%TFA) B:ACN(0.01%TFA)
 Gradient: 5% to 95%B within 1.3 min
 Flow Rate :1.8ml/min
 Column :SunFire C18, 4.6*50mm,3.5um A-RP-433
 Oven Temperature : 45

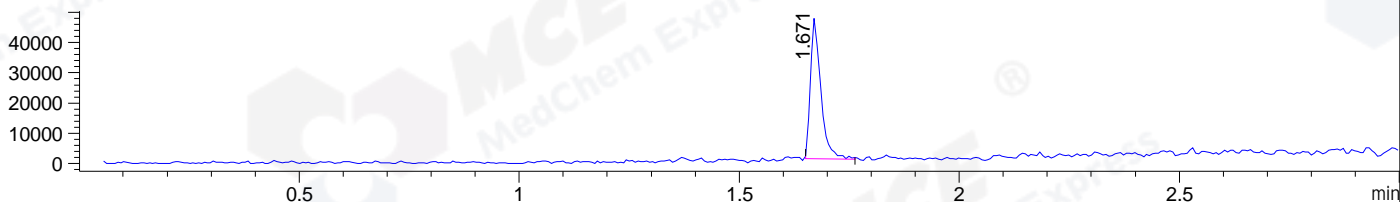
DAD1 B, Sig=214,4 Ref=off



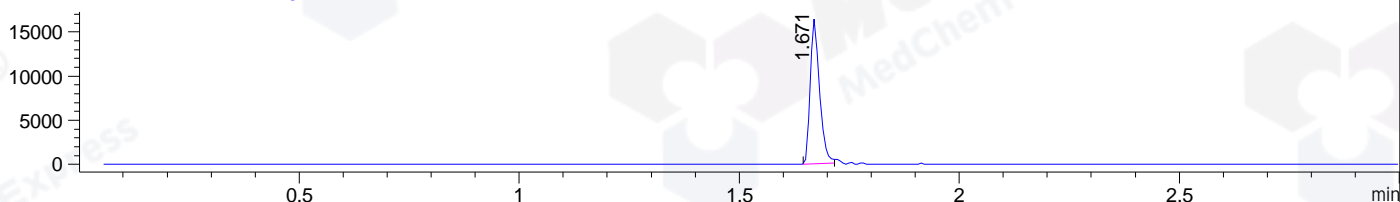
DAD1 C, Sig=254,4 Ref=off



MSD1 TIC, MS File ES-API, Pos, Scan, Frag: 70



Ion 213, MSD1 213, Target Mass 212 +H Positive, EIC=212.7:213.7



Integration Results for DAD1 B, Sig=214,4 Ref=off

RetTim	Width	Area	Height	Area%	MS (+)
0.65	0.01	1.04	1.26	0.14	ND
1.66	0.02	738.24	660.92	99.86	213

Integration Results for DAD1 C, Sig=254,4 Ref=off

RetTim	Width	Area	Height	Area%	MS (+)
1.66	0.02	224.20	202.28	99.78	213
2.00	0.01	0.50	0.61	0.22	ND

Integration Results for MSD1 TIC, MS File

RetTim	Width	Area	Height	Area%	MS (+)
1.67	0.03	76878.89	46450.26	100.00	213

Ret. Time: 1.67

<<<< POSITIVE SPECTRA >>>>

