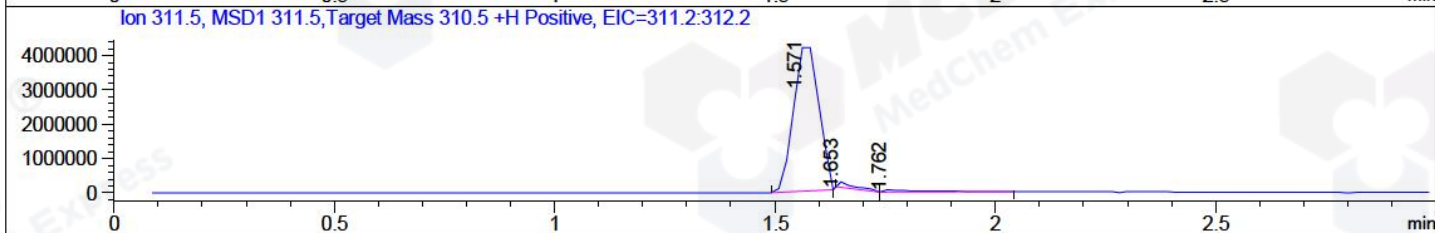
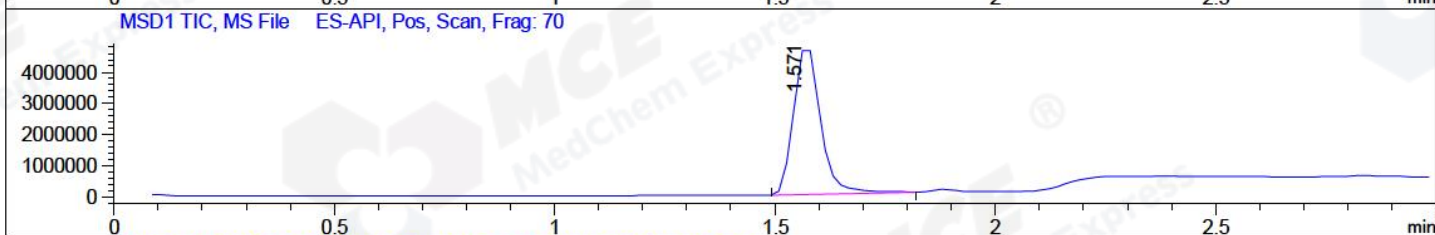
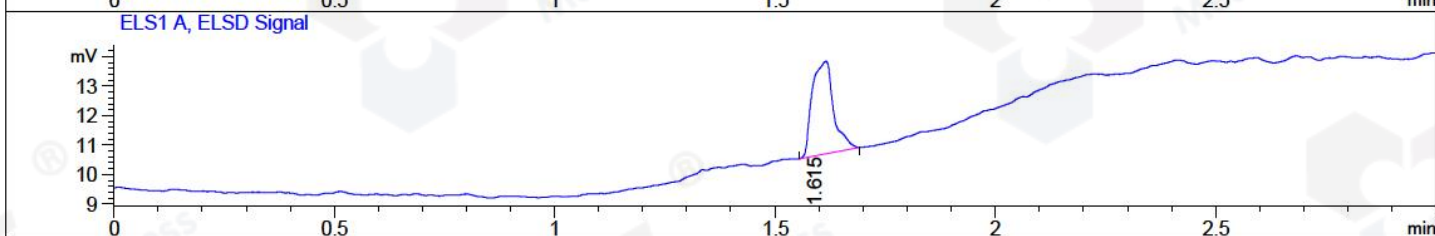
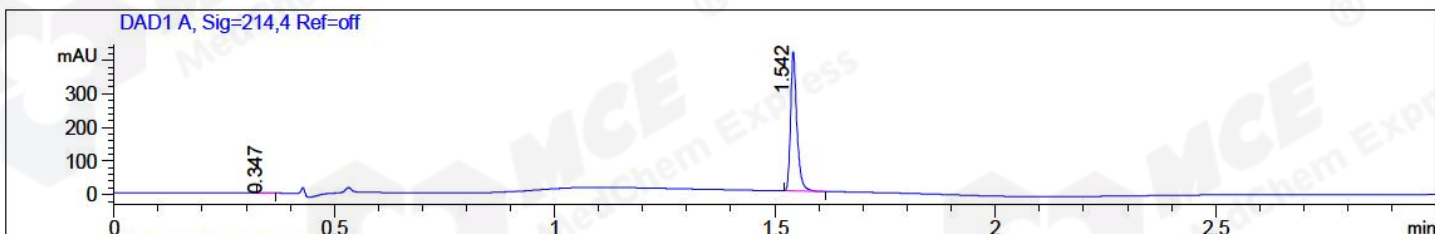


File ..\2018\20180317\20180317\CPK2018-316-15430.D Tgt Mass (CHM):
Injection Date : 17 Mar 18 10:03 am +0800 Seq. Line : 10
Sample Name : CPK2018-316-15430 Location : P2-C-07
Acq. Operator : SYSTEM Inj : 1
Spec. Reported : MS Integration Inj Volume : 1 ul
Acq. Method : D:\LCMS03\Data\2018\20180317\20180317\1-POS-3MIN.M
Analysis Method : D:\LCMS03\Data\2018\20180317\20180317\1-POS-3MIN.M
Catalog No : HY-12761 Batch#15430
Method Info : Mobile Phase: A: water(0.01%TFA) B:ACN(0.01%TFA)
Gradient: 5% to 95%B within 1.3 min
Flow Rate :1.8ml/min
Column :SunFire C18, 4.6*50mm,3.5um A-RP-186
Oven Temperature : 45C



Integration Results for DAD1 A, Sig=214,4 Ref=off

RetTim	Width	Area	Height	Area%	MS (+)
0.35	0.03	1.62	1.07	0.39	ND
1.54	0.02	416.18	417.05	99.61	311

Integration Results for ELS1 A, ELSD Signal

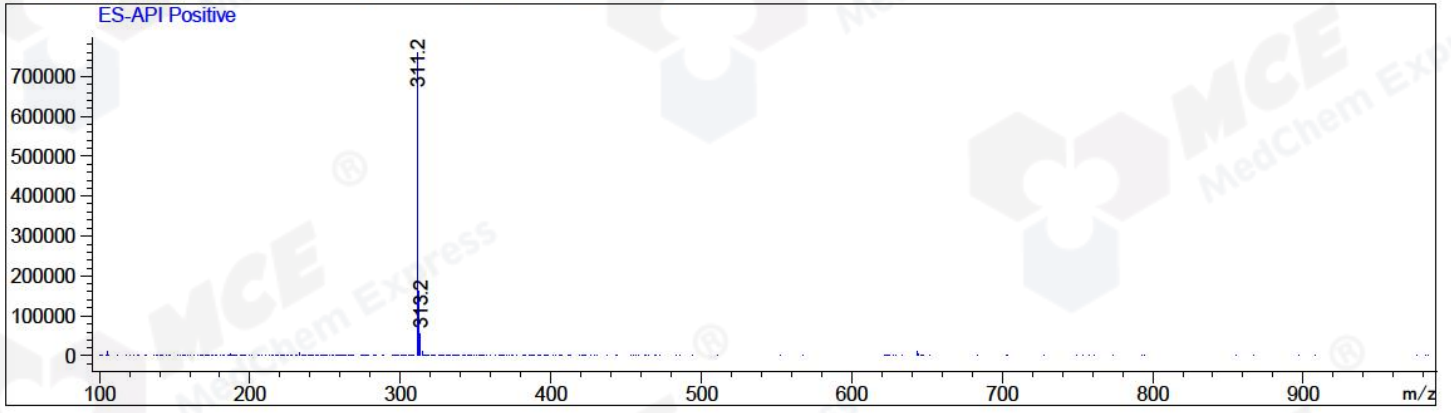
RetTim	Width	Area	Height	Area%	MS (+)
1.62	0.05	10.60	3.13	100.00	311

Integration Results for MSD1 TIC, MS File

RetTim	Width	Area	Height	Area%	MS (+)
1.57	0.07	20219402.00	4811309.50	100.00	311

Ret. Time: 1.57

<<<< POSITIVE SPECTRA >>>>



*** End of Report ***