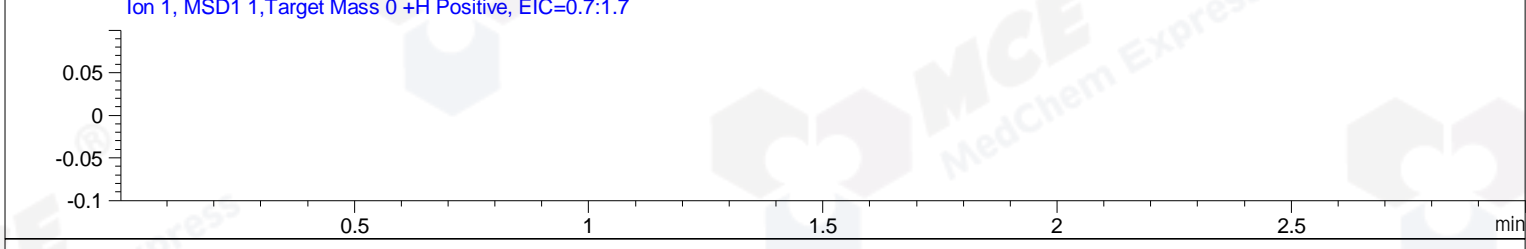
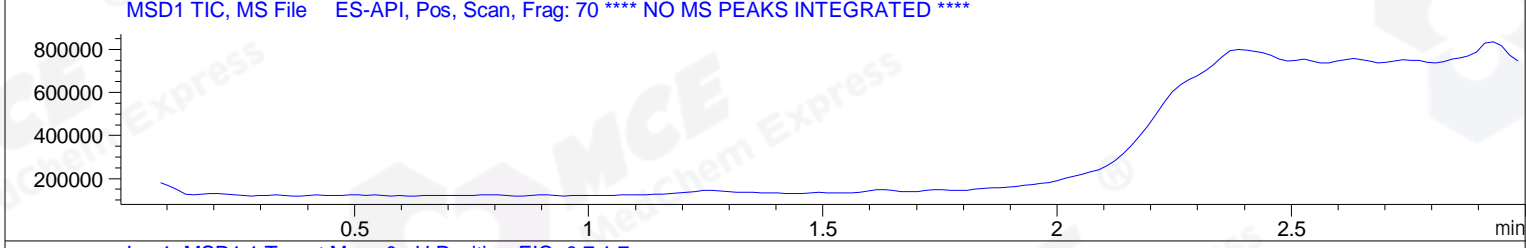
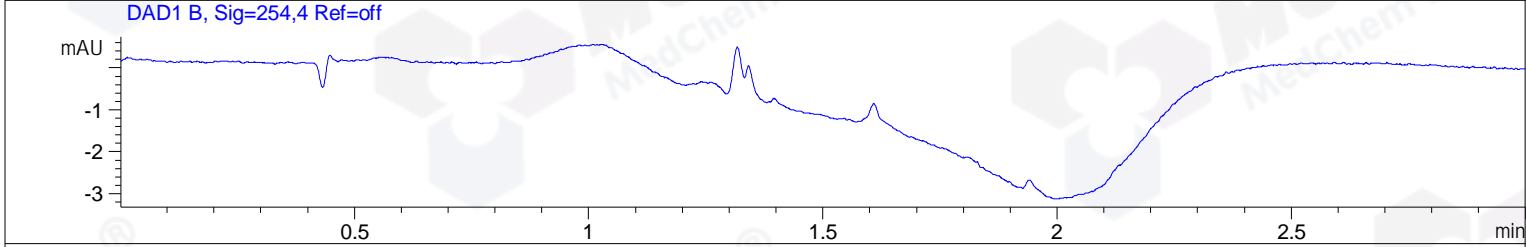
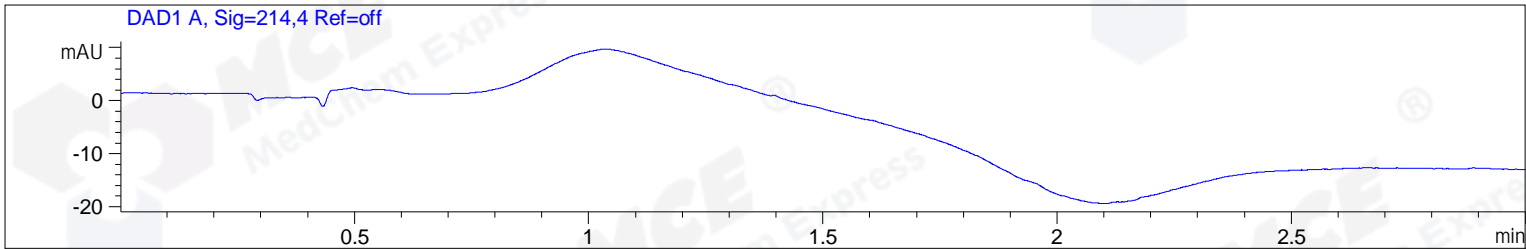


File ..\Data\20190812\20190812\ZFX7036-002-4\_0-1.D Tgt Mass (CHM):  
 Injection Date : 12 Aug 19 2:57 pm +0800 Seq. Line : 65  
 Sample Name : ZFX7036-002-4\_0 Location : P1-D-08  
 Acq. Operator : SYSTEM Inj : 1  
 Spec. Reported : MS Integration Inj Volume : 1 ul  
 Acq. Method : D:\LCMS03\Data\20190812\20190812\1-POS-3MIN.M  
 Analysis Method : D:\LCMS03\Data\20190812\20190812\1-POS-3MIN.M  
 Catalog No : HY-12885C Batch#44309  
 Method Info : Mobile Phase: A: water(0.01%TFA) B:ACN(0.01%TFA)  
 Gradient: 5% to 95%B within 1.3 min  
 Flow Rate :1.8ml/min  
 Column :SunFire C18, 4.6\*50mm,3.5um A-RP-446  
 Oven Temperature : 45C



Integration Results for DAD1 A, Sig=214,4 Ref=off

RetTim	Width	Area	Height	Area%	MS (+)
-----	-----	-----	-----	-----	-----

Integration Results for DAD1 B, Sig=254,4 Ref=off

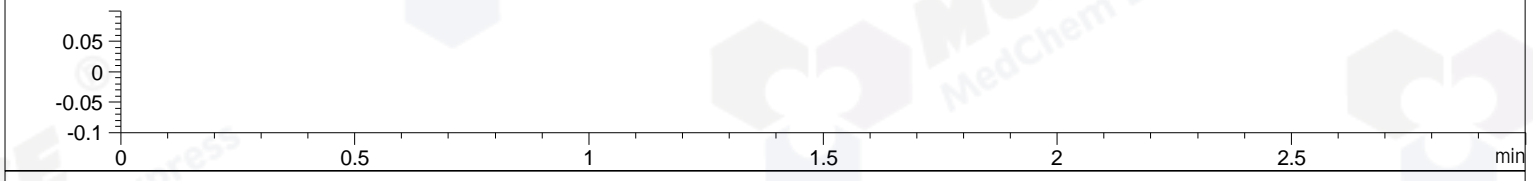
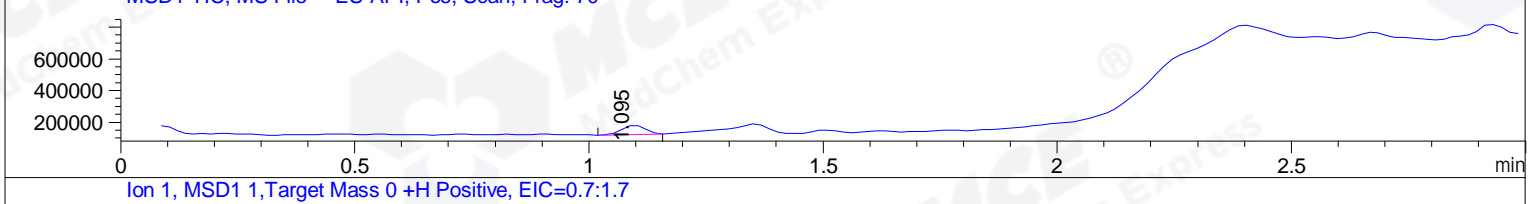
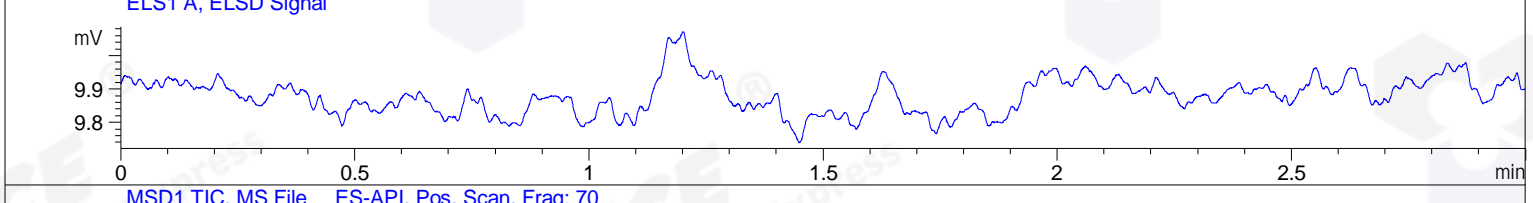
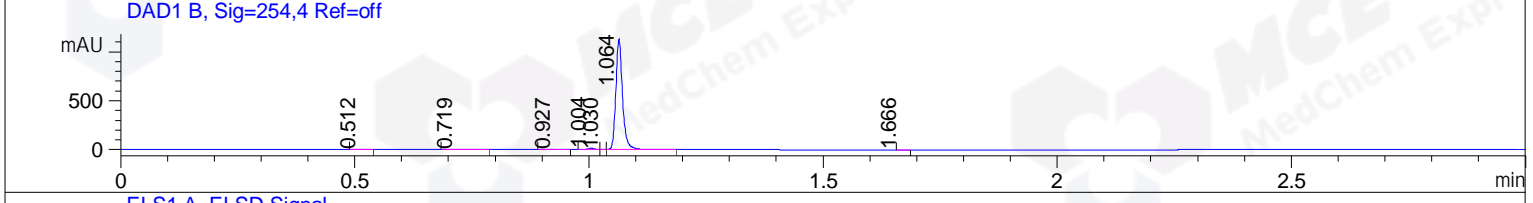
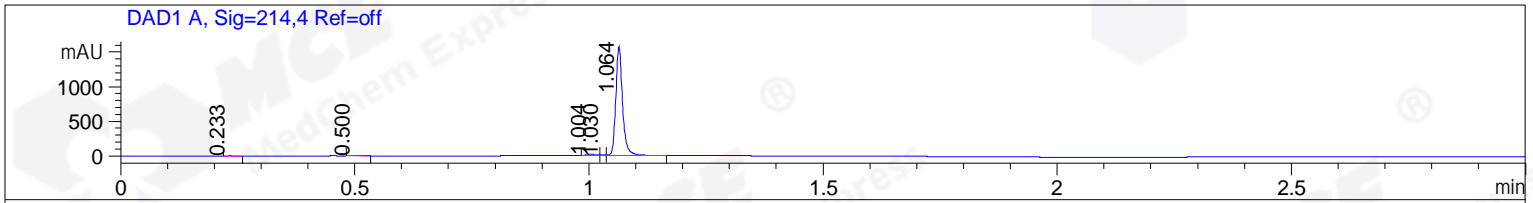
RetTim	Width	Area	Height	Area%	MS (+)
-----	-----	-----	-----	-----	-----

Integration Results for MSD1 TIC, MS File

RetTim	Width	Area	Height	Area%	MS (+)
-----	-----	-----	-----	-----	-----

\*\*\* End of Report \*\*\*

File ..03\Data\20190812\20190812\ZFX7036-002-4-1.D Tgt Mass (CHM):  
 Injection Date : 12 Aug 19 3:02 pm +0800 Seq. Line : 66  
 Sample Name : ZFX7036-002-4 Location : P1-D-09  
 Acq. Operator : SYSTEM Inj : 1  
 Spec. Reported : MS Integration Inj Volume : 2 ul  
 Acq. Method : D:\LCMS03\Data\20190812\20190812\1-POS-3MIN.M  
 Analysis Method : D:\LCMS03\Data\20190812\20190812\1-POS-3MIN.M  
 Catalog No : HY-12885C Batch#44309  
 Method Info : Mobile Phase: A: water(0.01%TFA) B:ACN(0.01%TFA)  
 Gradient: 5% to 95%B within 1.3 min  
 Flow Rate :1.8ml/min  
 Column :SunFire C18, 4.6\*50mm,3.5um A-RP-446  
 Oven Temperature : 45C



Integration Results for DAD1 A, Sig=214,4 Ref=off

RetTim	Width	Area	Height	Area%	MS (+)
0.23	0.02	1.18	1.04	0.07	145
0.50	0.02	6.61	5.37	0.41	145
1.00	0.02	18.95	17.02	1.18	145
1.03	0.01	3.52	4.43	0.22	145
1.06	0.02	1571.94	1573.17	98.11	145

Integration Results for DAD1 B, Sig=254,4 Ref=off

RetTim	Width	Area	Height	Area%	MS (+)
0.51	0.02	0.44	0.33	0.04	145
0.72	0.02	0.55	0.30	0.05	145
0.93	0.03	1.09	0.64	0.10	145
1.00	0.02	13.94	12.80	1.22	145
1.03	0.01	2.06	2.66	0.18	145
1.06	0.02	1126.00	1130.04	98.41	145
1.67	0.01	0.10	0.12	0.01	114

Integration Results for ELS1 A, ELSD Signal

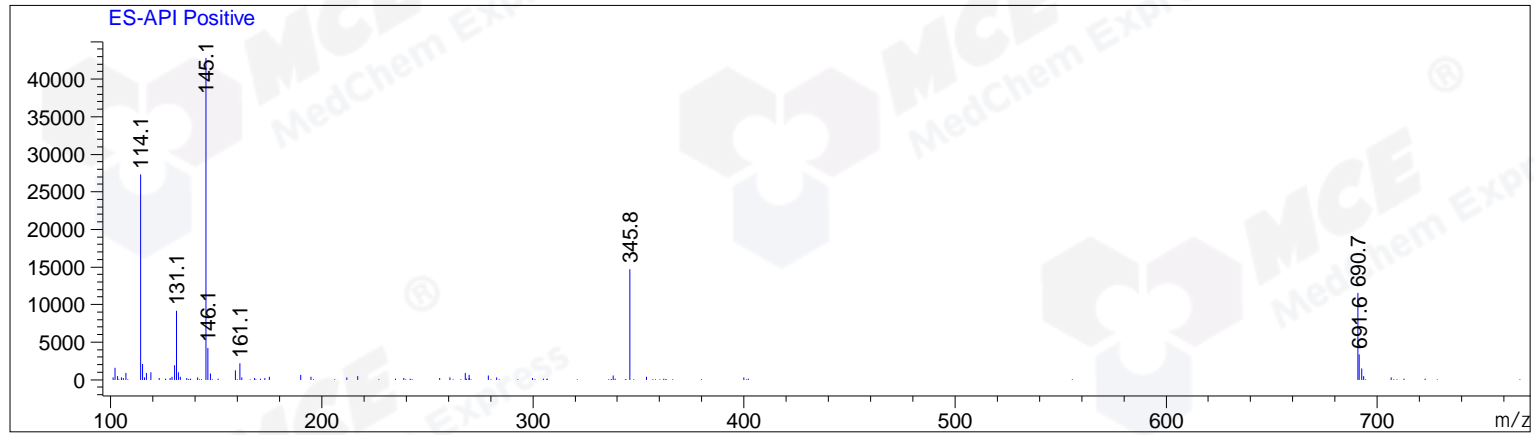
RetTim	Width	Area	Height	Area%	MS (+)
--------	-------	------	--------	-------	--------

Integration Results for MSD1 TIC, MS File

RetTim	Width	Area	Height	Area%	MS (+)
1.10	0.06	198956.14	58058.72	100.00	145

Ret. Time: 1.10

<<<< POSITIVE SPECTRA >>>>



\*\*\* End of Report \*\*\*