

File ..\DATA\2020\20200224\850\BIZ2020-224-CXL4.D Tgt Mass (CHM):

Injection Date : 24 Feb 20 4:01 pm +0800 Seq. Line : 38

Sample Name : BIZ2020-224-CXL4 Location : P1-A-09

Acq. Operator : ZJ\_1432 Inj : 1

Spec. Reported : MS Integration Inj Volume : 0.25 ul

Acq. Method : D:\Chem32\1\data\2020\20200224\850\1-POS-3MIN.M

Analysis Method : D:\CHEM32\1\DATA\2020\20200224\850\1-POS-3MIN.M

Catalog No : HY-129395 Batch#60729

Method Info : Mobile Phase: A: water(0.01%TFA) B:ACN(0.01%TFA)

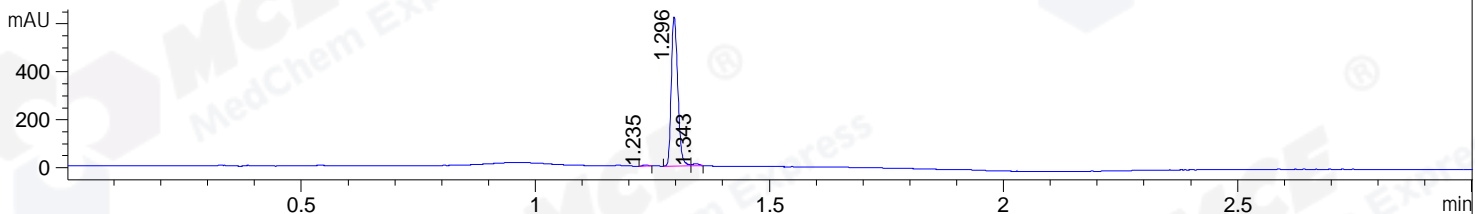
Gradient: 5% to 95%B within 1.3 min

Flow Rate :1.8ml/min

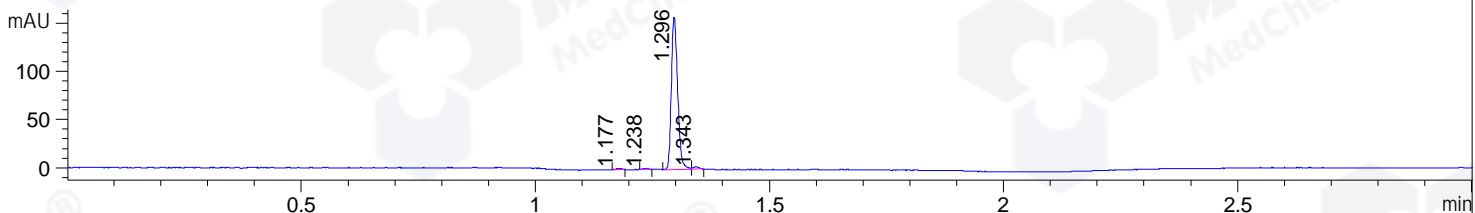
Column :SunFire C18, 4.6\*50mm,3.5um A-RP-433

Oven Temperature : 45

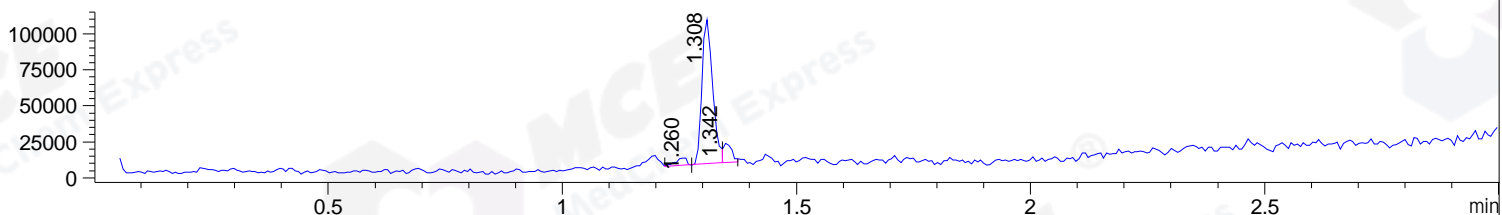
DAD1 B, Sig=214,4 Ref=off



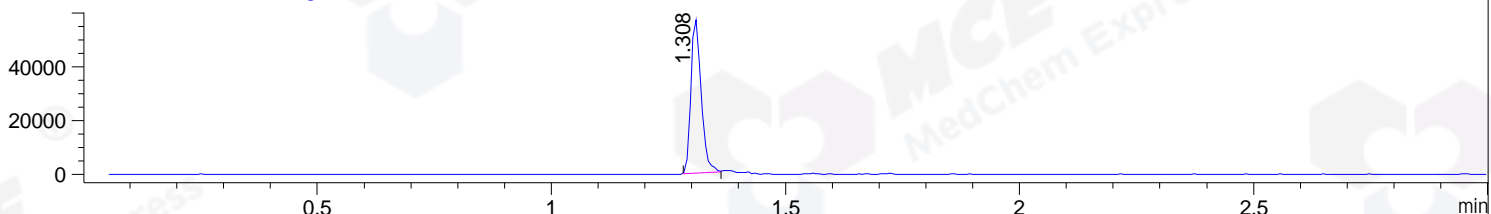
DAD1 C, Sig=254,4 Ref=off



MSD1 TIC, MS File ES-API, Pos, Scan, Frag: 70



Ion 568, MSD1 568, Target Mass 567 +H Positive, EIC=567.7:568.7



Integration Results for DAD1 B, Sig=214,4 Ref=off

RetTim	Width	Area	Height	Area%	MS (+)
1.23	0.01	3.56	4.83	0.58	ND
1.30	0.02	601.44	622.54	98.02	568
1.34	0.01	8.58	9.56	1.40	568

Integration Results for DAD1 C, Sig=254,4 Ref=off

RetTim	Width	Area	Height	Area%	MS (+)
1.18	0.01	0.71	0.86	0.48	269
1.24	0.01	0.58	0.87	0.39	ND
1.30	0.02	146.75	158.04	98.01	568
1.34	0.01	1.69	2.01	1.13	568

Integration Results for MSD1 TIC, MS File

RetTim	Width	Area	Height	Area%	MS (+)
1.26	0.02	8186.32	5708.31	4.44	ND
1.31	0.03	162322.67	101836.91	87.96	568

1.34

0.02

14039.54

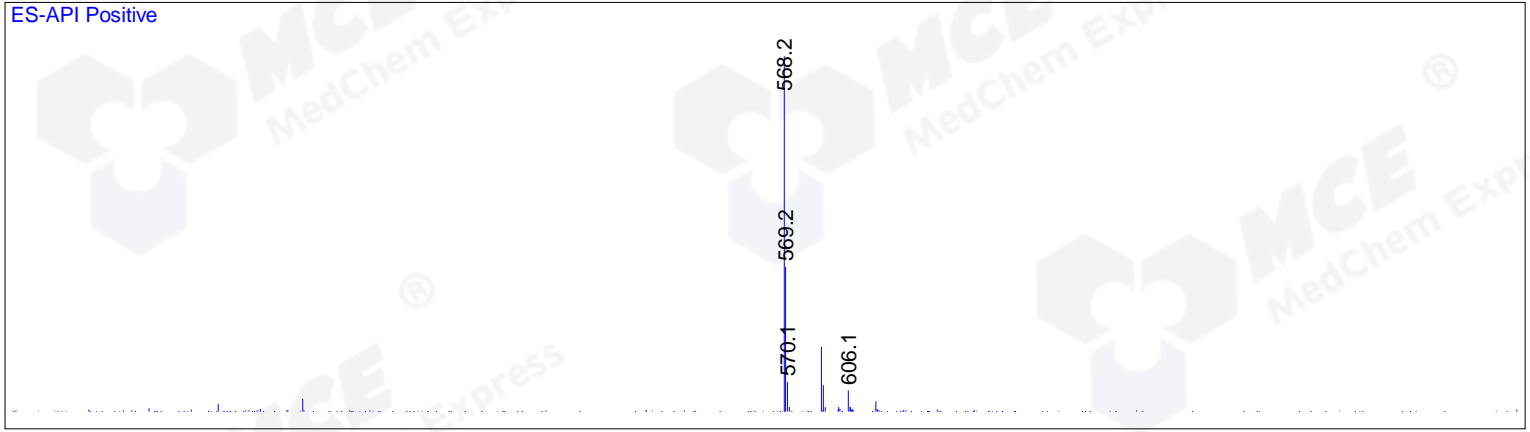
14801.77

7.61

568

Ret. Time: 1.31

ES-API Positive



Ret. Time: 1.34

ES-API Positive

