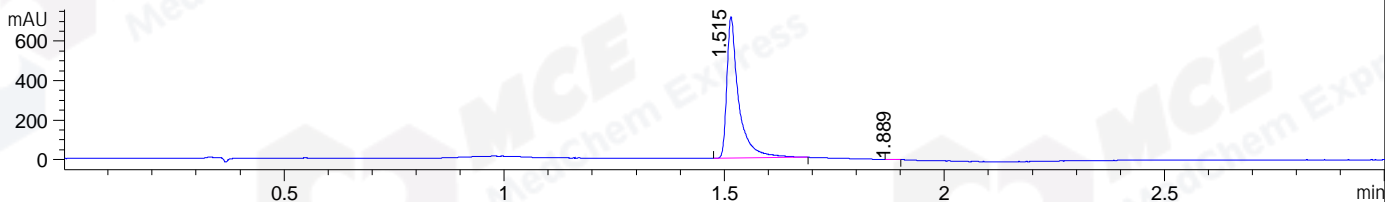
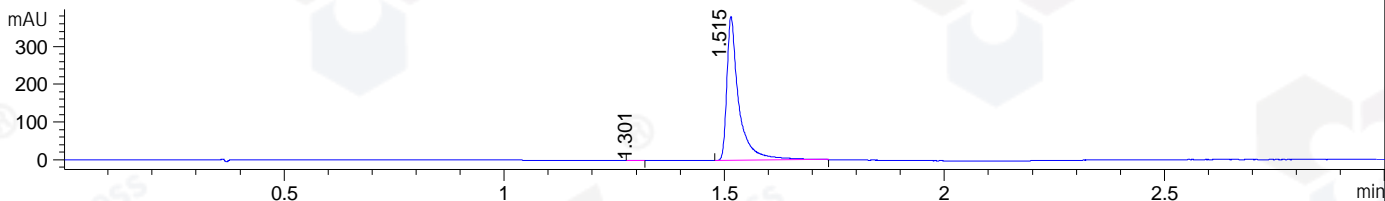


File ..\DATA\2019\20191207\786\BIZ2019-D06-CXL8.D Tgt Mass (CHM):
 Injection Date : 7 Dec 19 12:41 pm +0800 Seq. Line : 15
 Sample Name : BIZ2019-D06-CXL8 Location : P1-F-02
 Acq. Operator : ZJ_1432 Inj : 1
 Spec. Reported : MS Integration Inj Volume : 1.5 ul
 Acq. Method : D:\Chem32\1\data\2019\20191207\786\1-POS-3MIN.M
 Analysis Method : D:\CHEM32\1\DATA\2019\20191207\786\1-POS-3MIN.M
 Catalog No : HY-13038B Batch#57596
 Method Info : Mobile Phase: A: water(0.01%TFA) B:ACN(0.01%TFA)
 Gradient: 5% to 95%B within 1.3 min
 Flow Rate :1.8ml/min
 Column :SunFire C18, 4.6*50mm,3.5um A-RP-433
 Oven Temperature : 45□

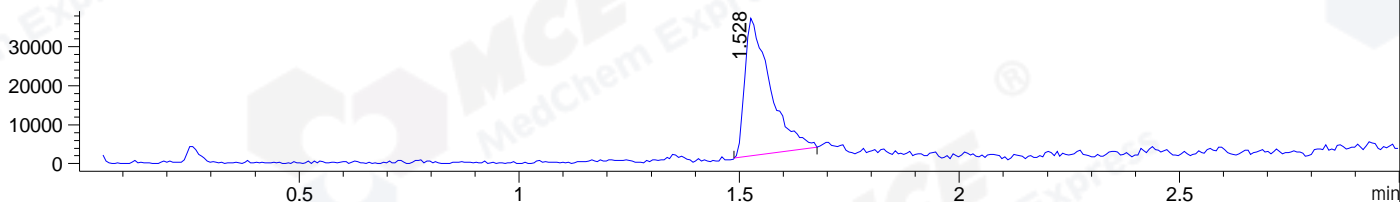
DAD1 B, Sig=214,4 Ref=off



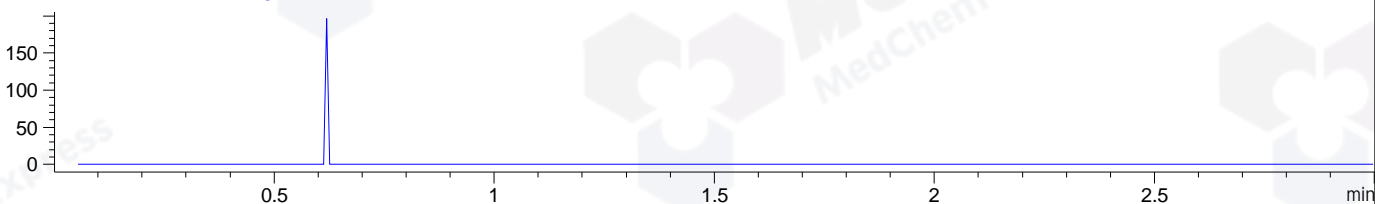
DAD1 C, Sig=254,4 Ref=off



MSD1 TIC, MS File ES-API, Pos, Scan, Frag: 70



Ion 733, MSD1 733, Target Mass 732 +H Positive, EIC=732.7:733.7



Integration Results for DAD1 B, Sig=214,4 Ref=off

RetTim	Width	Area	Height	Area%	MS (+)
1.52	0.03	1346.38	717.81	99.92	581
1.89	0.02	1.05	1.09	0.08	ND

Integration Results for DAD1 C, Sig=254,4 Ref=off

RetTim	Width	Area	Height	Area%	MS (+)
1.30	0.02	0.37	0.40	0.05	ND
1.52	0.03	725.85	381.60	99.95	581

Integration Results for MSD1 TIC, MS File

RetTim	Width	Area	Height	Area%	MS (+)
1.53	0.05	142670.64	35592.01	100.00	581

Ret. Time: 1.53

<<<< POSITIVE SPECTRA >>>>

ES-API Positive

