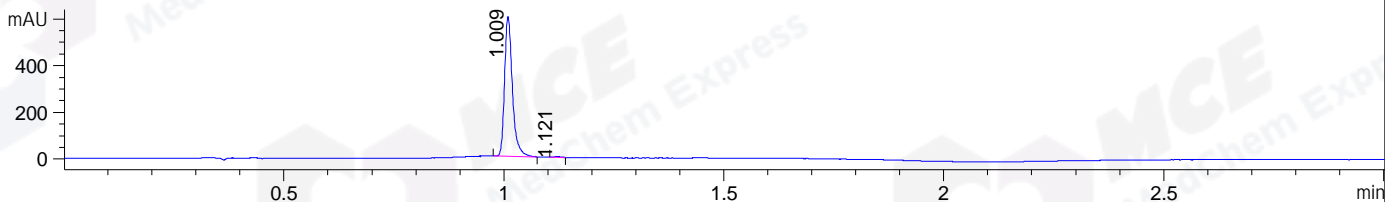
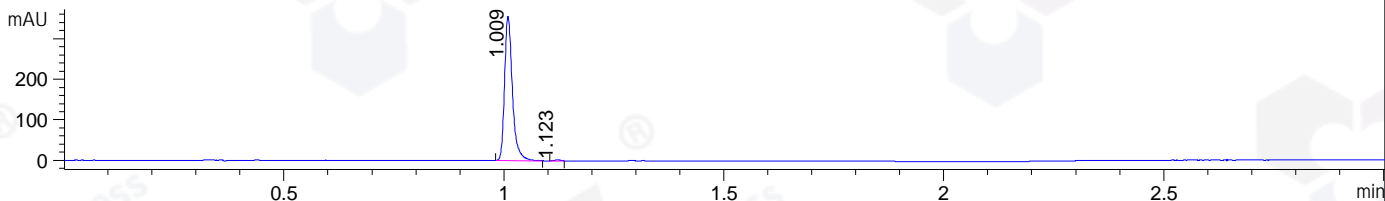


File ..\DATA\2019\20191115\761\BIZ2019-N14-SCH2-.D Tgt Mass (CHM):
 Injection Date : 15 Nov 19 10:45 am +0800 Seq. Line : 25
 Sample Name : BIZ2019-N14-SCH2 Location : P1-A-04
 Acq. Operator : ZJ_1432 Inj : 1
 Spec. Reported : MS Integration Inj Volume : 0.5 ul
 Acq. Method : D:\Chem32\1\data\2019\20191115\761\1-POS-3MIN.M
 Analysis Method : D:\CHEM32\1\DATA\2019\20191115\761\1-POS-3MIN.M
 Catalog No : HY-13216 Batch# 55406
 Method Info : Mobile Phase: A: water(0.01%TFA) B:ACN(0.01%TFA)
 Gradient: 5% to 95%B within 1.3 min
 Flow Rate :1.8ml/min
 Column :SunFire C18, 4.6*50mm,3.5um A-RP-433
 Oven Temperature : 45□

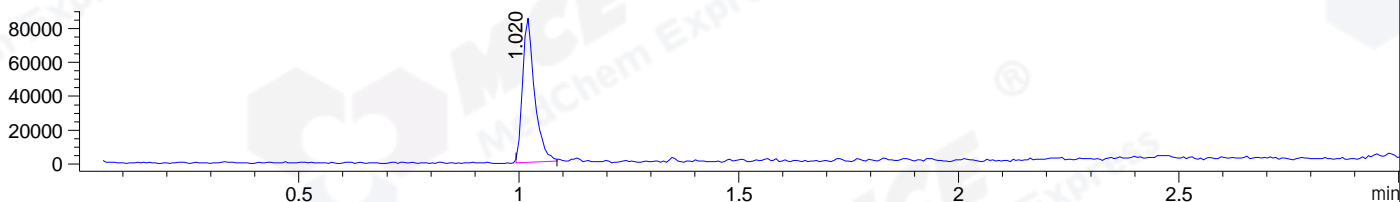
DAD1 B, Sig=214,4 Ref=off



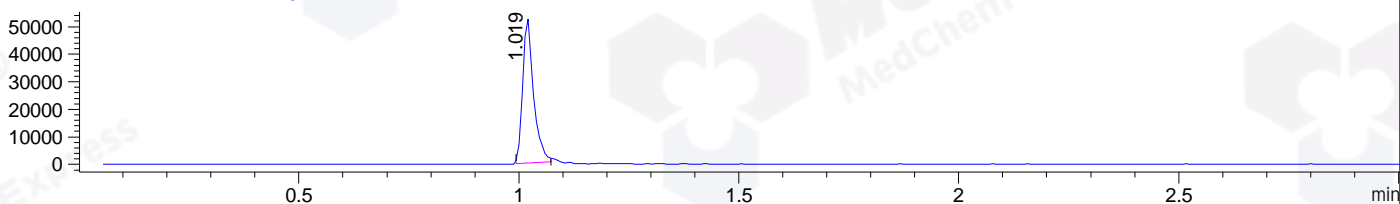
DAD1 C, Sig=254,4 Ref=off



MSD1 TIC, MS File ES-API, Pos, Scan, Frag: 70



Ion 266, MSD1 266, Target Mass 265 +H Positive, EIC=265.7:266.7



Integration Results for DAD1 B, Sig=214,4 Ref=off

| RetTim | Width | Area | Height | Area% | MS (+) |
|--------|-------|--------|--------|-------|--------|
| 1.01 | 0.02 | 741.33 | 599.45 | 99.51 | 266 |
| 1.12 | 0.02 | 3.67 | 3.51 | 0.49 | ND |

Integration Results for DAD1 C, Sig=254,4 Ref=off

| RetTim | Width | Area | Height | Area% | MS (+) |
|--------|-------|--------|--------|-------|--------|
| 1.01 | 0.02 | 439.93 | 356.14 | 99.50 | 266 |
| 1.12 | 0.02 | 2.19 | 2.13 | 0.50 | ND |

Integration Results for MSD1 TIC, MS File

| RetTim | Width | Area | Height | Area% | MS (+) |
|--------|-------|-----------|----------|--------|--------|
| 1.02 | 0.03 | 161298.44 | 85120.12 | 100.00 | 266 |

Ret. Time: 1.02

<<<< POSITIVE SPECTRA >>>>

