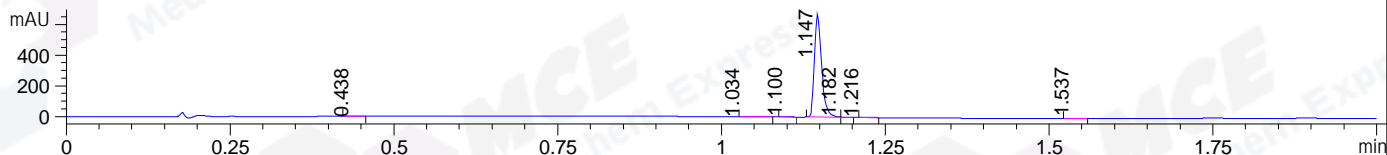
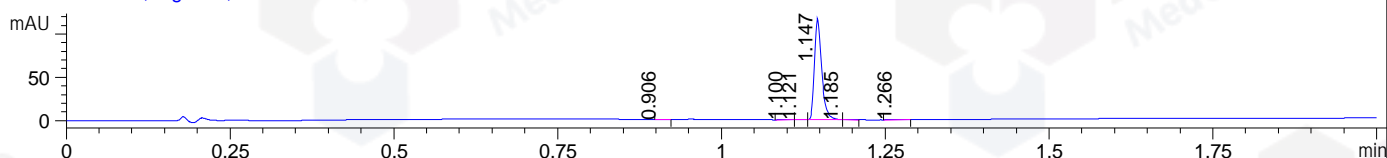


File ..20201229 2020-12-29 07-59-34\YH8813-001-1.D Tgt Mass (CHM):  
Injection Date : 29 Dec 20 11:52 am +0800 Seq. Line : 52  
Sample Name : YH8813-001-1 Location : P1-D-07  
Acq. Operator : SYSTEM Inj : 1  
Spec. Reported : MS Integration Inj Volume : 0.2 ul  
Acq. Method : D:\LCMS03\Data\20201229\20201229 2020-12-29 07-59-34\1-POS-UPLC2.0MIN(0.8ML)  
Analysis Method : D:\LCMS03\Data\20201229\20201229 2020-12-29 07-59-34\1-POS-UPLC2.0MIN(0.8ML) -  
CAS NO. : 166663-25-8  
Method Info : Mobile Phase: A: water(0.01%TFA) B:ACN(0.01%TFA)  
Gradient: 5% to 95%B within 0.6 min  
Flow Rate :0.8ml/min  
Column :Poroshell 120 EC- C18, 2.1\*50mm,1.9um A-RP-677  
Oven Temperature : 45C

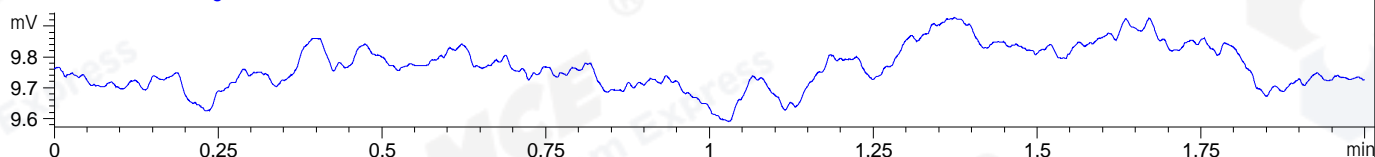
DAD1 A, Sig=214,4 Ref=off



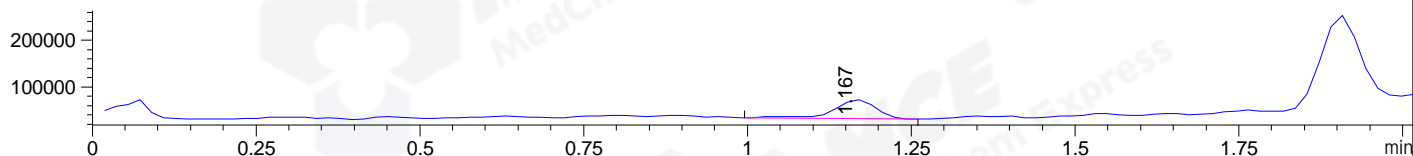
DAD1 B, Sig=254,4 Ref=off



ELS1 A, ELSD Signal



MSD1 TIC, MS File ES-API, Pos, Scan, Frag: 70



Ion 1, MSD1 1, Target Mass 0 +H Positive, EIC=0.7:1.7



Integration Results for DAD1 A, Sig=214,4 Ref=off

RetTim	Width	Area	Height	Area%	MS (+)
0.44	0.02	0.64	0.68	0.12	439
1.03	0.02	0.35	0.29	0.07	444
1.10	0.01	0.83	1.24	0.16	444
1.15	0.01	514.80	672.70	99.26	1123
1.18	0.01	0.76	1.54	0.15	1123
1.22	0.01	0.50	0.67	0.10	444
1.54	0.01	0.77	0.95	0.15	444

Integration Results for DAD1 B, Sig=254,4 Ref=off

RetTim	Width	Area	Height	Area%	MS (+)
0.91	0.01	0.07	0.10	0.07	444
1.10	0.01	0.11	0.16	0.12	444
1.12	0.01	0.10	0.14	0.10	444
1.15	0.01	90.25	117.71	99.19	1123
1.19	0.01	0.19	0.32	0.21	1123
1.27	0.01	0.28	0.36	0.31	444

## Integration Results for ELS1 A, ELSD Signal

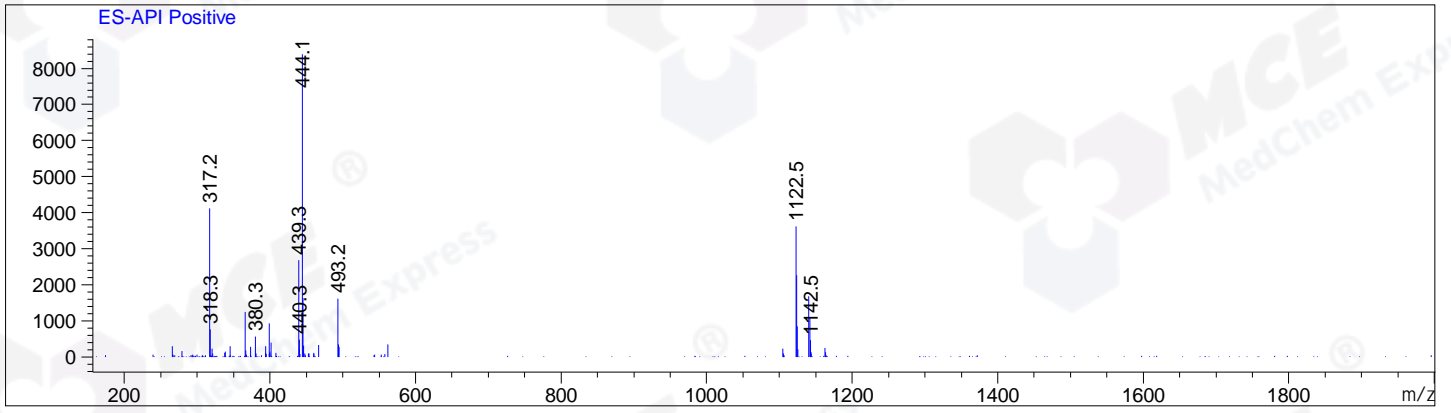
RetTim	Width	Area	Height	Area%	MS (+)
--------	-------	------	--------	-------	--------

## Integration Results for MSD1 TIC, MS File

RetTim	Width	Area	Height	Area%	MS (+)
1.17	0.07	184172.53	40874.04	100.00	444

Ret. Time: 1.17

<<<< POSITIVE SPECTRA >>>>



\*\*\* End of Report \*\*\*