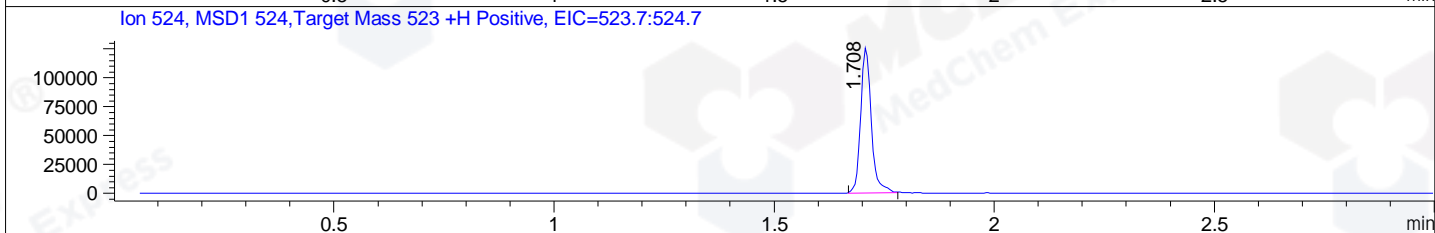
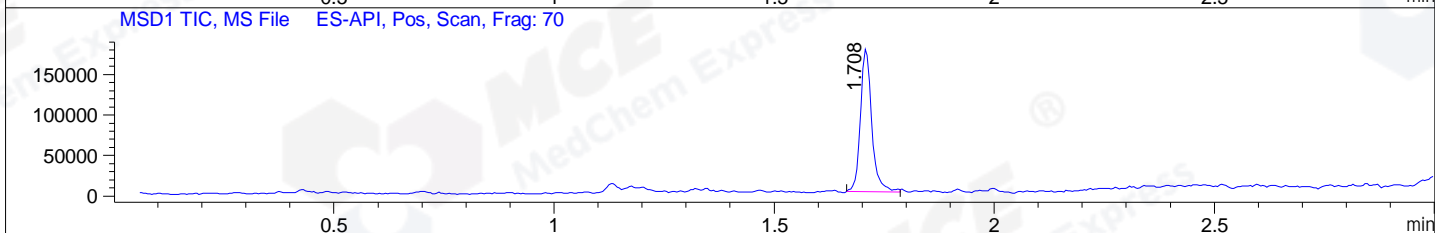
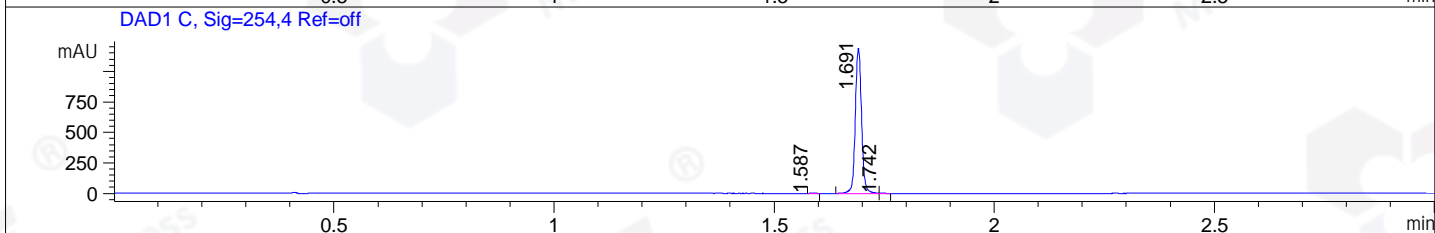
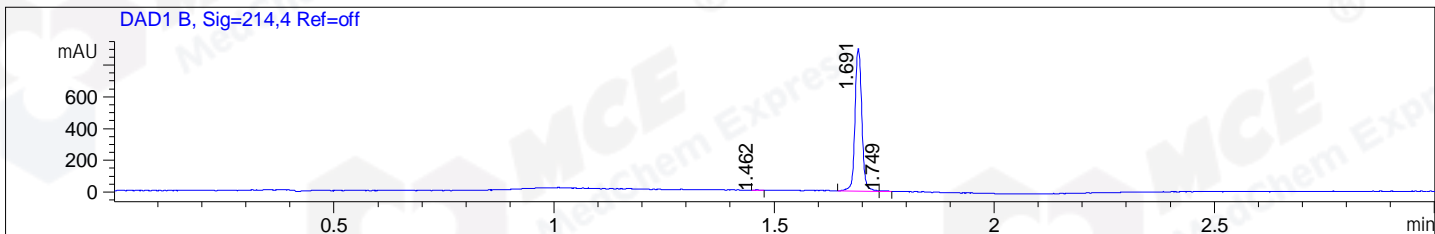


File ..DATA\2020\20200812\1067\BIZ2020-810-WLQ6-.D Tgt Mass (CHM):
 Injection Date : 12 Aug 20 11:43 pm +0800 Seq. Line : 158
 Sample Name : BIZ2020-810-WLQ6 Location : P1-D-07
 Acq. Operator : ZJ_1432 Inj : 1
 Spec. Reported : MS Integration Inj Volume : 1 ul
 Acq. Method : D:\Chem32\1\data\2020\20200812\1067\1-POS-3MIN.M
 Analysis Method : D:\CHEM32\1\DATA\2020\20200812\1067\1-POS-3MIN.M
 Catalog No : HY-136174
 Method Info : Mobile Phase: A: water(0.01%TFA) B:ACN(0.01%TFA)
 Gradient: 5% to 95%B within 1.3 min
 Flow Rate :1.8ml/min
 Column :SunFire C18, 4.6*50mm,3.5um A-RP-607
 Oven Temperature : 45C



Integration Results for DAD1 B, Sig=214,4 Ref=off

RetTim	Width	Area	Height	Area%	MS (+)
1.46	0.01	1.56	2.35	0.16	ND
1.69	0.02	962.93	898.78	99.45	524
1.75	0.02	3.74	3.50	0.39	524

Integration Results for DAD1 C, Sig=254,4 Ref=off

RetTim	Width	Area	Height	Area%	MS (+)
1.59	0.02	1.35	1.44	0.11	ND
1.69	0.02	1176.26	1191.63	99.77	524
1.74	0.01	1.42	2.01	0.12	524

Integration Results for MSD1 TIC, MS File

RetTim	Width	Area	Height	Area%	MS (+)
1.71	0.03	309728.53	176661.75	100.00	524

Ret. Time: 1.71

<<<< POSITIVE SPECTRA >>>>

ES-API Positive

