

File ..\2018\20180328\20180328\CPK2018-328-16627.D Tgt Mass (CHM):

Injection Date : 28 Mar 18 6:57 pm +0800 Seq. Line : 121

Sample Name : CPK2018-328-16627 Location : P2-E-05

Acq. Operator : SYSTEM Inj : 1

Spec. Reported : MS Integration Inj Volume : 1 ul

Acq. Method : D:\LCMS03\Data\2018\20180328\20180328\1-POS-3MIN.M

Analysis Method : D:\LCMS03\Data\2018\20180328\20180328\1-POS-3MIN.M

Catalog No : HY-14149 Batch#16627

Method Info : Mobile Phase: A: water(0.01%TFA) B:ACN(0.01%TFA)

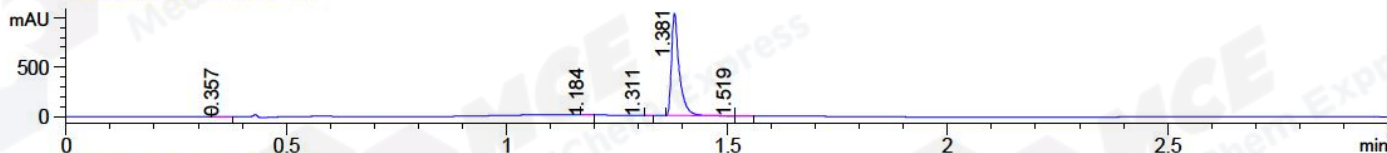
Gradient: 5% to 95%B within 1.3 min

Flow Rate :1.8ml/min

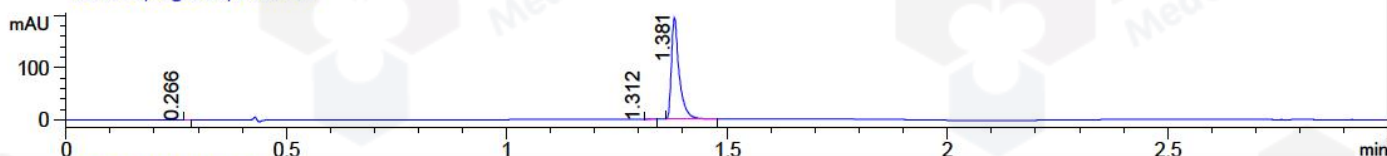
Column :SunFire C18, 4.6*50mm,3.5um A-RP-186

Oven Temperature : 45C

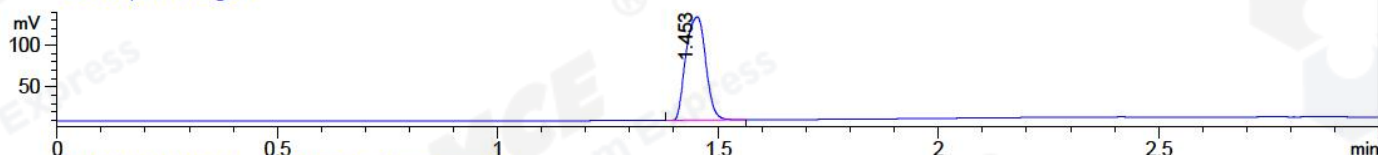
DAD1 A, Sig=214,4 Ref=off



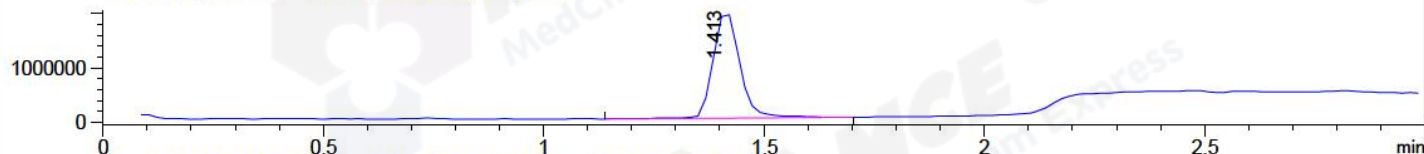
DAD1 B, Sig=254,4 Ref=off



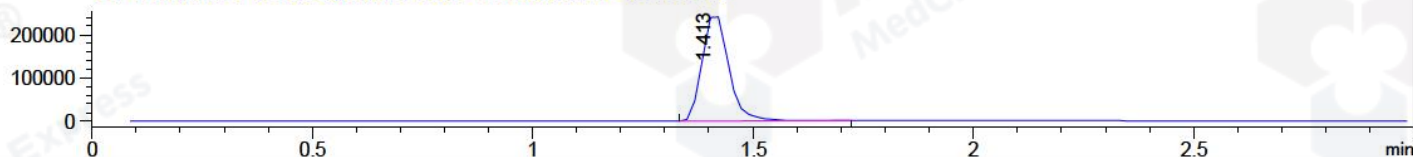
ELS1 A, ELSD Signal



MSD1 TIC, MS File ES-API, Pos, Scan, Frag: 70



Ion 466.9, MSD1 466.9, Target Mass 465.9 +H Positive, EIC=466.6:467.6



Integration Results for DAD1 A, Sig=214,4 Ref=off

RetTim	Width	Area	Height	Area%	MS (+)
0.36	0.03	1.58	1.04	0.13	ND
1.18	0.02	0.27	0.29	0.02	ND
1.31	0.02	0.45	0.14	0.04	432
1.38	0.02	1255.15	1030.05	99.72	466
1.52	0.03	1.28	0.52	0.10	466

Integration Results for DAD1 B, Sig=254,4 Ref=off

RetTim	Width	Area	Height	Area%	MS (+)
0.27	0.01	0.13	-0.02	0.05	891
1.31	0.02	0.21	0.01	0.09	432
1.38	0.02	235.98	193.57	99.85	466

Integration Results for ELS1 A, ELSD Signal

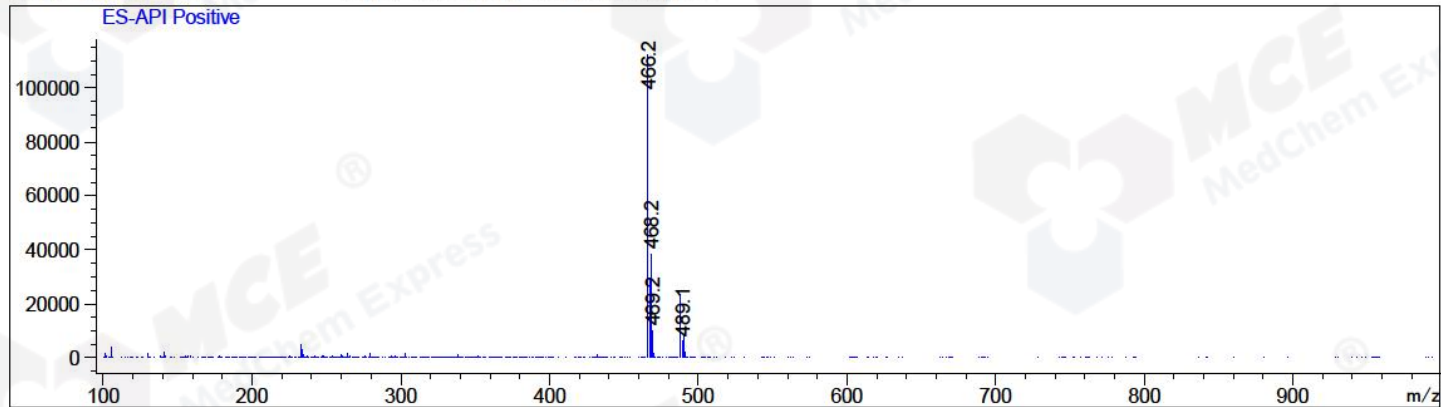
RetTim	Width	Area	Height	Area%	MS (+)
1.45	0.05	385.58	123.51	100.00	466

Integration Results for MSD1 TIC, MS File

RetTim	Width	Area	Height	Area%	MS (+)
1.41	0.07	8237911.00	1981906.75	100.00	466

Ret. Time: 1.41

<<<< POSITIVE SPECTRA >>>>



*** End of Report ***