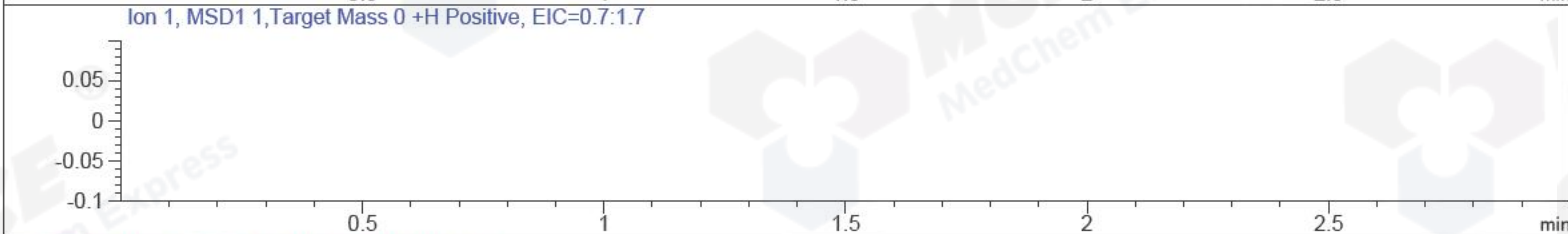
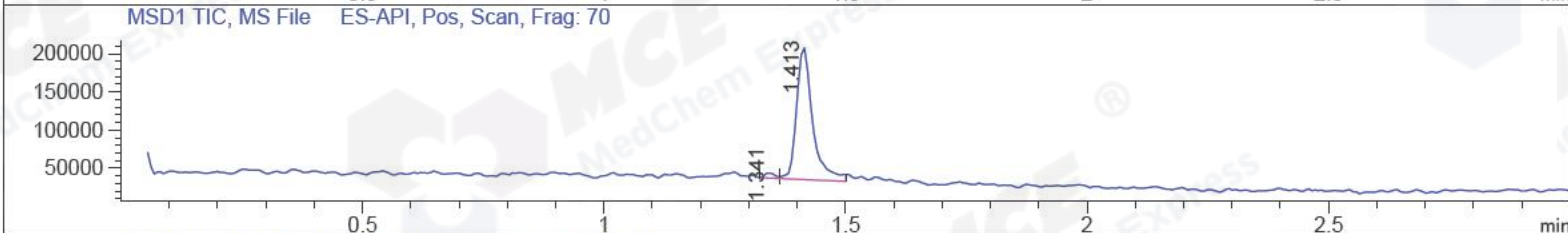
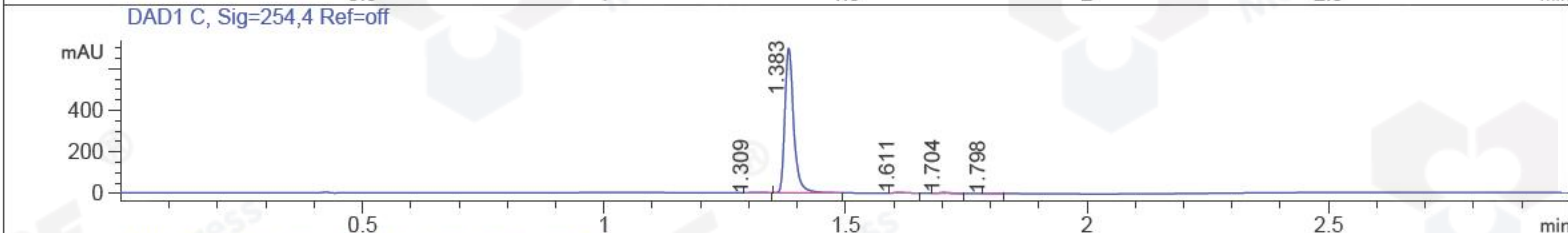
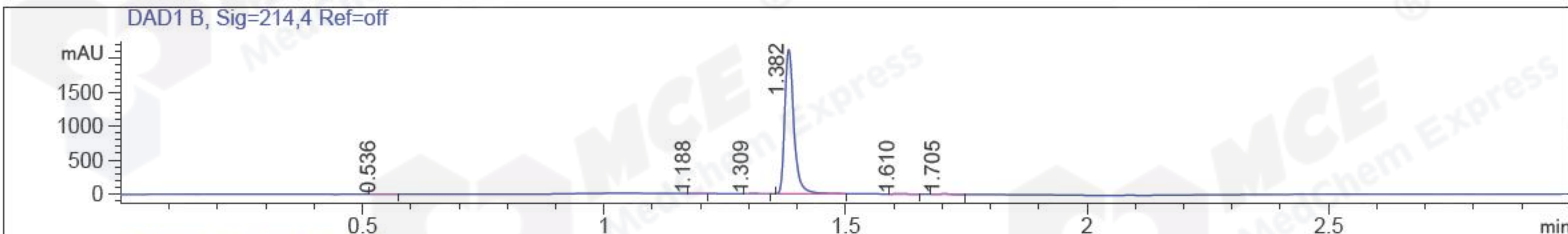


File ..27-1 2017-07-27 11-37-01\BIZ2017-727-WYQ6.D Tgt Mass (CHM):
 Injection Date : 27 Jul 17 12:09 pm +0800 Seq. Line : 8
 Sample Name : BIZ2017-727-WYQ6 Location : P2-B-01
 Acq. Operator : ZLJ_587 Inj : 1
 Spec. Reported : MS Integration Inj Volume : 1 ul
 Acq. Method : D:\chem32\1\DATA\20170726\20170727-1 2017-07-27 11-37-01\1-POS-3MIN.M
 Analysis Method : D:\CHEM32\1\DATA\20170726\20170727-1 2017-07-27 11-37-01\1-POS-3MIN.M
 Catalog No : HY-14483 Batch#25576 A-RP-186
 Method Info : Mobile Phase: A: water(0.01%TFA) B:ACN(0.01%TFA)
 Gradient: 5% to 95%B within 1.3 min
 Flow Rate :1.8ml/min
 Column :SunFire C18, 4.6*50mm,3.5um A-RP-186
 Oven Temperature : 45C



Integration Results for DAD1 B, Sig=214,4 Ref=off

RetTim	Width	Area	Height	Area%	MS (+)
0.54	0.02	6.31	4.18	0.22	245
1.19	0.02	1.67	1.46	0.06	245
1.31	0.02	4.93	4.24	0.17	245
1.38	0.02	2802.90	2128.17	98.95	401
1.61	0.02	7.27	4.59	0.26	245
1.70	0.02	9.42	6.32	0.33	245

Integration Results for DAD1 C, Sig=254,4 Ref=off

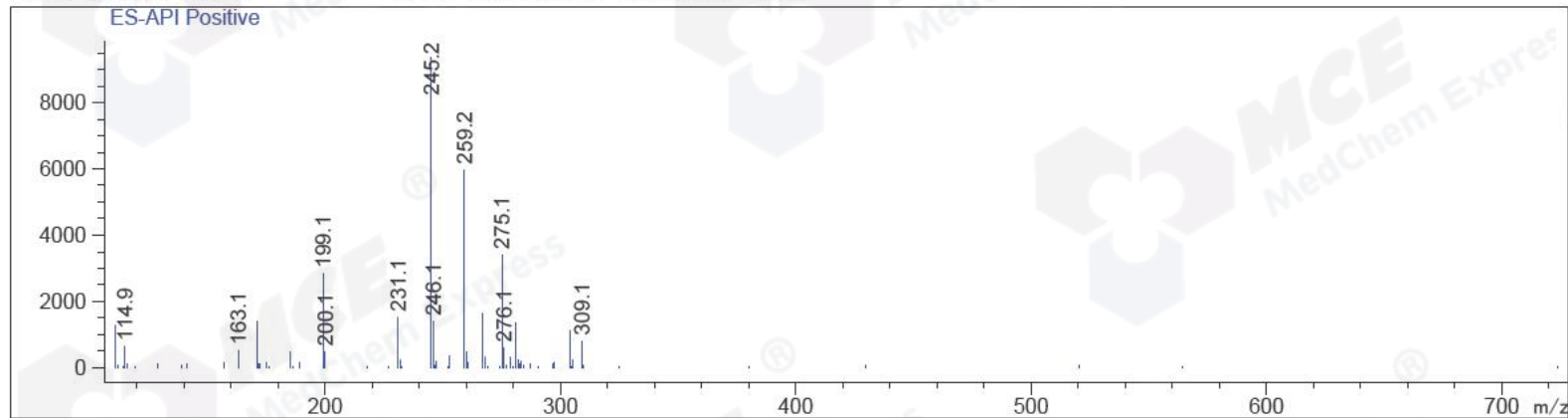
RetTim	Width	Area	Height	Area%	MS (+)
1.31	0.03	2.31	1.28	0.26	245
1.38	0.02	884.72	695.74	98.40	401
1.61	0.02	5.98	3.80	0.67	245
1.70	0.02	5.00	3.54	0.56	245
1.80	0.02	1.14	0.79	0.13	245

Integration Results for MSD1 TIC, MS File

1.34	0.02	9836.15	6477.26	2.39	245
1.41	0.03	401740.56	173644.47	97.61	401

RetTim	Width	Area	Height	Area%	MS(+)
--------	-------	------	--------	-------	-------

Ret. Time: 1.34 <<<< POSITIVE SPECTRA >>>>



Ret. Time: 1.41

