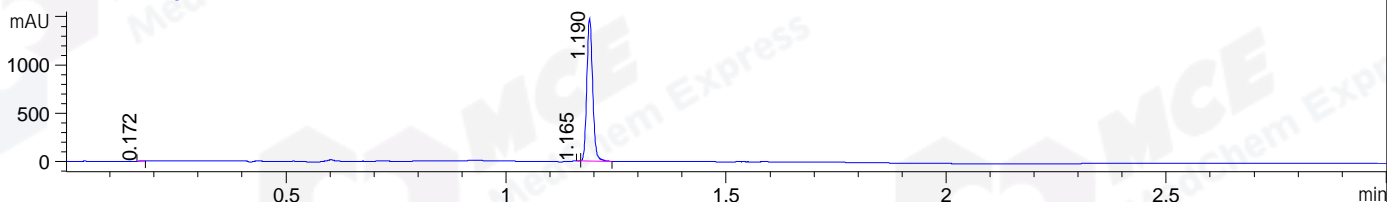
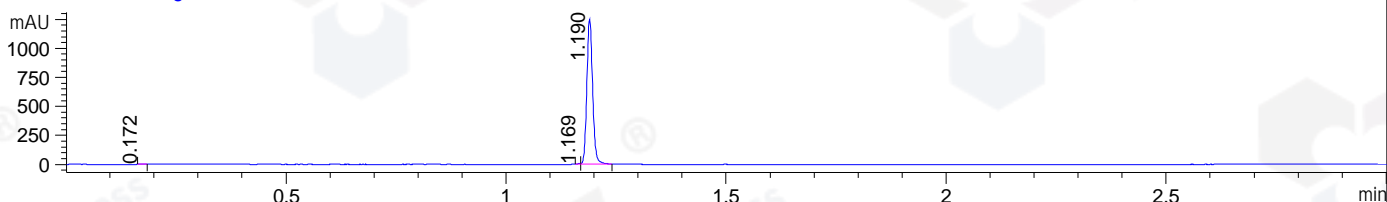


File ..DATA\2020\20201116\1155\CPK2020-N16-29834.D Tgt Mass (CHM):
Injection Date : 16 Nov 20 7:58 pm +0800 Seq. Line : 94
Sample Name : CPK2020-N16-29834 Location : P1-A-09
Acq. Operator : zyj_1547 Inj : 1
Spec. Reported : MS Integration Inj Volume : 1 ul
Acq. Method : D:\Chem32\1\data\2020\20201116\1155\1-POS-3MIN.M
Analysis Method : D:\CHEM32\1\DATA\2020\20201116\1155\1-POS-3MIN.M
CAS NO. : 156223-05-1
Method Info : Mobile Phase: A: water(0.01%TFA) B:ACN(0.01%TFA)
Gradient: 5% to 95%B within 1.3 min
Flow Rate :1.8ml/min
Column :SunFire C18, 4.6*50mm,3.5um A-RP-698

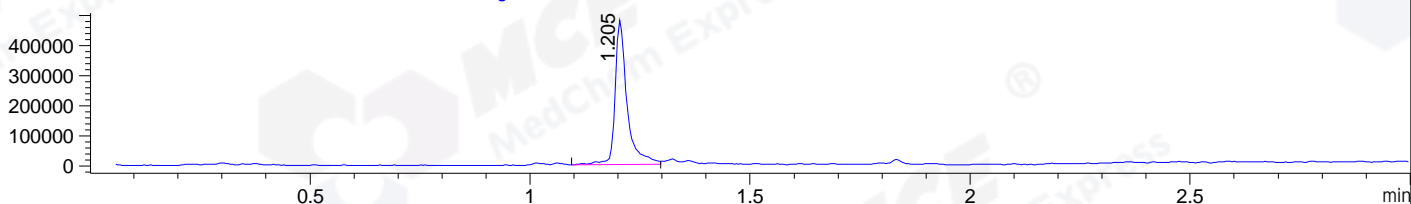
DAD1 B, Sig=214,4 Ref=off



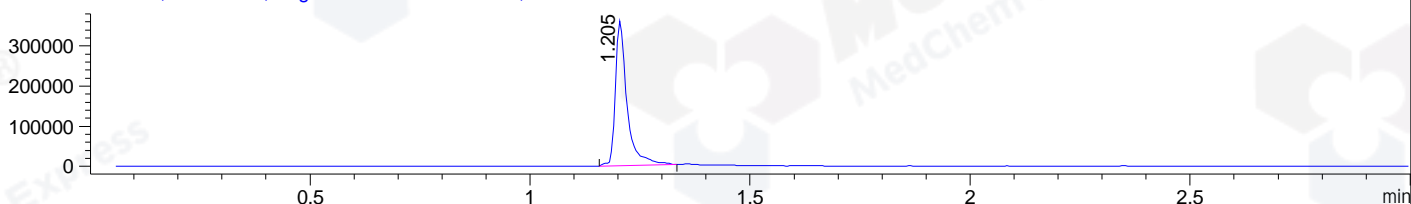
DAD1 C, Sig=254,4 Ref=off



MSD1 TIC, MS File ES-API, Pos, Scan, Frag: 70



Ion 309, MSD1 309, Target Mass 308 +H Positive, EIC=308.7:309.7



Integration Results for DAD1 B, Sig=214,4 Ref=off

RetTim	Width	Area	Height	Area%	MS(+)
0.17	0.01	0.76	1.35	0.06	ND
1.16	0.01	2.31	6.51	0.17	309
1.19	0.02	1361.65	1477.20	99.78	309

Integration Results for DAD1 C, Sig=254,4 Ref=off

RetTim	Width	Area	Height	Area%	MS(+)
0.17	0.01	0.70	0.97	0.06	ND
1.17	0.01	1.99	5.36	0.17	309
1.19	0.02	1134.47	1249.26	99.76	309

Integration Results for MSD1 TIC, MS File

RetTim	Width	Area	Height	Area%	MS(+)
1.20	0.03	915836.75	480921.81	100.00	309

Ret. Time: 1.20

<<<< POSITIVE SPECTRA >>>>

ES-API Positive

