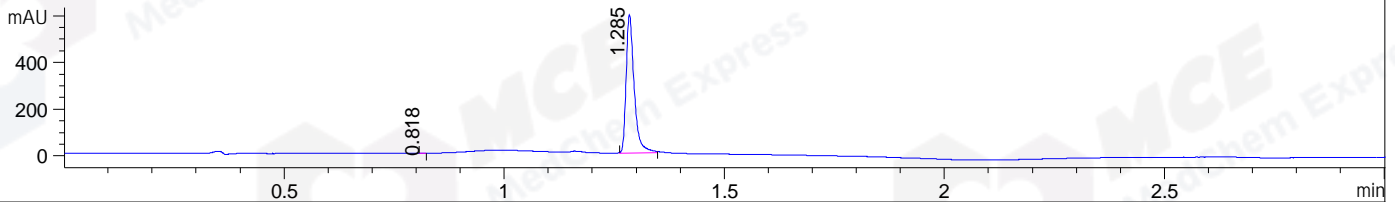
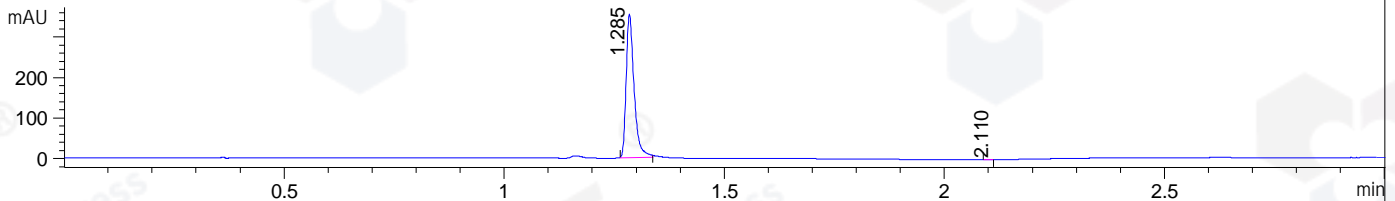


File ..\DATA\2019\20190409\565\CPK2019-409-06972.D Tgt Mass (CHM):
 Injection Date : 9 Apr 19 4:28 pm +0800 Seq. Line : 23
 Sample Name : CPK2019-409-06972 Location : P2-A-03
 Acq. Operator : LQ_1052 Inj : 1
 Spec. Reported : MS Integration Inj Volume : 1 ul
 Acq. Method : D:\Chem32\1\data\2019\20190409\565\1-POS-3MIN-1.M
 Analysis Method : D:\CHEM32\1\DATA\2019\20190409\565\1-POS-3MIN-1.M
 Catalog No : HY-15315 Batch#06972
 Method Info : Mobile Phase: A: water(0.01%TFA) B:ACN(0.01%TFA)
 Gradient: 5% to 95%B within 1.3 min
 Flow Rate :1.8ml/min
 Column :SunFire C18, 4.6*50mm,3.5um A-RP-314
 Oven Temperature : 45

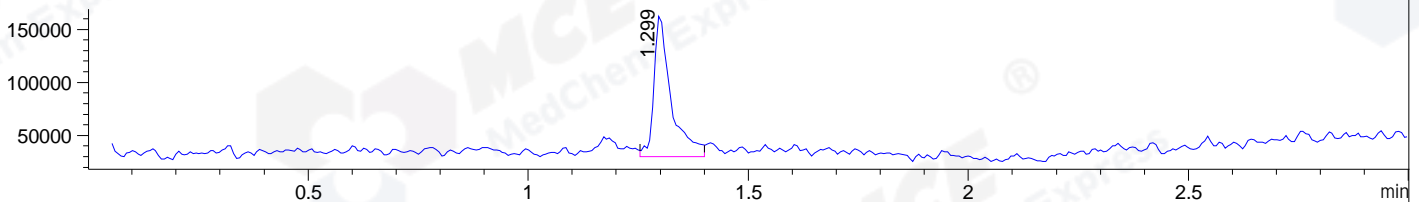
DAD1 B, Sig=214,4 Ref=off



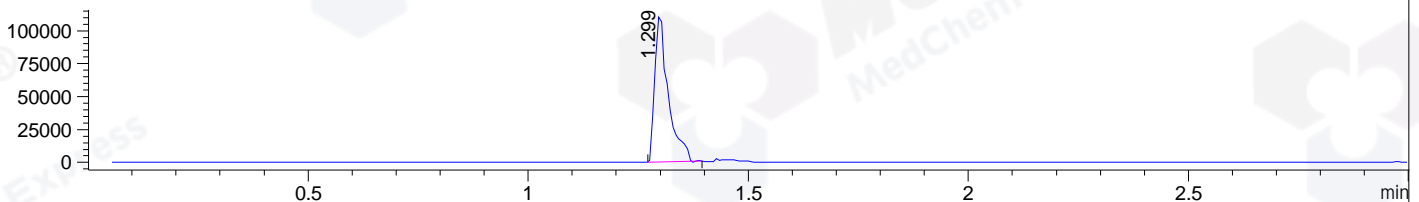
DAD1 C, Sig=254,4 Ref=off



MSD1 TIC, MS File ES-API, Pos, Scan, Frag: 70



Ion 372.4, MSD1 372.4, Target Mass 371.4 +H Positive, EIC=372.1:373.1



Integration Results for DAD1 B, Sig=214,4 Ref=off

RetTim	Width	Area	Height	Area%	MS (+)
0.82	0.01	0.23	0.37	0.03	160
1.28	0.02	752.75	592.80	99.97	372

Integration Results for DAD1 C, Sig=254,4 Ref=off

RetTim	Width	Area	Height	Area%	MS (+)
1.28	0.02	444.31	354.06	99.97	372
2.11	0.01	0.11	0.15	0.03	160

Integration Results for MSD1 TIC, MS File

RetTim	Width	Area	Height	Area%	MS (+)
1.30	0.04	359270.38	134522.41	100.00	372

Ret. Time: 1.30

<<<< POSITIVE SPECTRA >>>>

